

**Psychodidae (Diptera) of the Jeseníky Protected Landscape
Area and its environs with descriptions of two new
Berdeniella species from the Czech Republic**

Jan JEŽEK

Department of Entomology, National Museum, Kunratice 1, CZ-148 00 Praha 4, Czech Republic;
e-mail: entomologie@volny.cz

Abstract. Two new species of moth flies (Diptera, Psychodidae) of the genus *Berdeniella* Vaillant, 1976, are described from the Czech Republic, and all important diagnostic characters are figured: *B. desnensis* sp. nov. and *B. kocii* sp. nov. Altogether 78 species and 31 genera of moth flies (mainly Psychodinae, with only one genus and two species of Sycoracinae) are recorded from north-western Moravia; *Berdeniella longispinosa* (Vaillant, 1958) and *B. pyrenaica* Vaillant, 1977, from Jeseníky Mts. are new to the Czech Republic. This paper thus raises the total sum of species of moth flies known to occur in Bohemia, Moravia and the Czech Republic to 127, 123 and 148 species, respectively. Data on 226 localities in the Jeseníky Protected Landscape Area and its environs are briefly summarized. Notes on the distribution of some species are added, and the conservation value of moth flies for the Jeseníky Protected Landscape Area is discussed.

Key words. Diptera, Psychodidae, *Berdeniella*, taxonomy, faunistics, new species, new records, Czech Republic, Bohemia, Moravia

Introduction

The Psychodidae of the Czech Republic are still poorly known. In particular, data on the non-phlebotomine moth flies from north-west Moravian have been scattered in various papers and never synthesized. I have reported new faunistic records and new taxa from this area in a number of papers: *Paramormia polyscoidea* (Krek, 1971) in JEŽEK (1990a); *Psychodocha gemina* (Eaton, 1904), *Psychoa griseescens* (Tonnoir, 1922) and *Psychoda phalaenoides* (Linné, 1758) in JEŽEK (1990b); *Threticus incurvus* Krek, 1972, *T. silvaticus* Ježek, 1985, *Ulomyia plumata* (Tonnoir, 1919), *Pneumia plumicornis* (Tonnoir, 1922), *Tonnoiriella nigricauda*

(Tonnoir, 1919), *Szaboiella hibernica* (Tonnoir, 1940), *Saraiella rotunda* (Krek, 1970), *Berdeniella manicata* (Tonnoir, 1920) and *B. vimmeri* Ježek, 1995 in JEŽEK (1996); *Tonnoiriella sieberti* Wagner, 1993 in JEŽEK (1999); *Ulomyia vaseki* Ježek, 2002 (paratypes) in JEŽEK (2002); *Sycorax tonnoiri* Jung, 1954, *Atrichobrunettia graeca* Ježek & Goutner, 1993, *Parajungiella ellisi* (Withers, 1987), *Telmatoscopus carpathicus* Ježek, 1988, *T. labeculosus* (Eaton, 1893), *Philosepedon austriacum* Vaillant, 1974, *P. balkanicum* Krek, 1971, *P. hrudkai* Ježek, 1999, *Threticus arvernicus* Vaillant, 1972, *Psychodocha itoco* (Tokunaga & Komyo, 1955), *Ypsydocha setigera* (Tonnoir, 1922), *Berdeniella chvojikai* Ježek, 1999, *B. matthesi* (Jung, 1954), *B. stavniensis* (Krek, 1969), *Clytocerus dali* (Eaton, 1893) and *Saraiella parva* (Vaillant, 1963) in JEŽEK (2003); and *Szaboiella hibernica* (Tonnoir, 1940) in JEŽEK (2004b).

In this paper I record 78 species of moth flies of 31 genera from north-western Moravia. This number includes two new species of the pericomine genus *Berdeniella* Vaillant, 1976, *B. desnensis* sp. nov. and *B. kocii* sp. nov., and two species of the same genus that are new for the Czech Republic: *B. longispinosa* (Vaillant, 1958) and *B. pyrenaica* Vaillant, 1976 (both from the *freyi* group). The systematic position of this genus with all nomenclatorial problems was discussed in detail by JEŽEK (2002). Palaearctic *Berdeniella* species have only one retinaculum on the surstylus. Many non-Palaearctic pericomoid genera of moth flies classified in the Maruinini (DUCKHOUSE 1990) share this feature. However, they always lack 1-2 additional very short sensory angustifoliate outgrowths (spines) near the basis of the retinaculum, which are typical for *Berdeniella*. Including the two new species, the genus now comprises 63 species (see also WAGNER 1990).

Material and methods

Moth flies were collected in years 1994-2000 and 2003 in north-western Moravia, mainly in the area of the Jeseníky Protected Landscape Area, Rychlebské hory Mts., Žulovská pahorkatina hills, Zlatohorská vrchovina highlands and Českomoravské mezioří area (Moravian part). I have collected most specimens (by sweeping); other collectors (J. Frouz, P. Lauterer, J. Martinovský, R. Rozkošný, Grim and Ištváněh; the latter two used Malaise traps) are mentioned in the text. Captured moth flies were preserved in 75% ethanol and selected specimens were mounted on 1162 slides (Canada Balsam) which are deposited in the Department of Entomology of the National Museum (Natural History), Prague, Czech Republic (= NMPC). Information on additional slides briefly mentioned in this paper is taken from my earlier papers. Slides of types and three historical specimens (new records) were labelled with two kinds of inventory numbers: Inv. No. = Inventory Slide Number of the family Psychodidae, and Cat. No. = Catalogue Number of Slide, i.e. series for the type material including historical specimens of the Diptera collection in NMPC. Dominating vegetation with some comments on the biotopes are recorded in detail on the labels of almost all slides but not mentioned in the faunistic data in this paper. A list of all 226 localities with detailed information is added, including the code of Czech and Slovak faunistic grid mapping (ZELENÝ 1972, PRUNER & MÍKA 1996).

Wing indices are based on distances between the following points: A = tip of R_5 , B = radial fork, C = medial fork, D = tip of Cu; the distances are indicated by both extreme points.

Maximum wing length is (approximately) equal to the distance from a line connecting the bases of basal costal node to neala and the tip of R_5 . Fore, middle and hind leg ratios are indicated by P_1 , P_2 and P_3 , respectively.

The following abbreviations are used: PLA – Protected Landscape Area; MT – Malaise trap; CR – critically endangered species, EN – endangered species, VU – vulnerable species, NS – species not estimated in red list (JEŽEK 2005).

Taxonomy

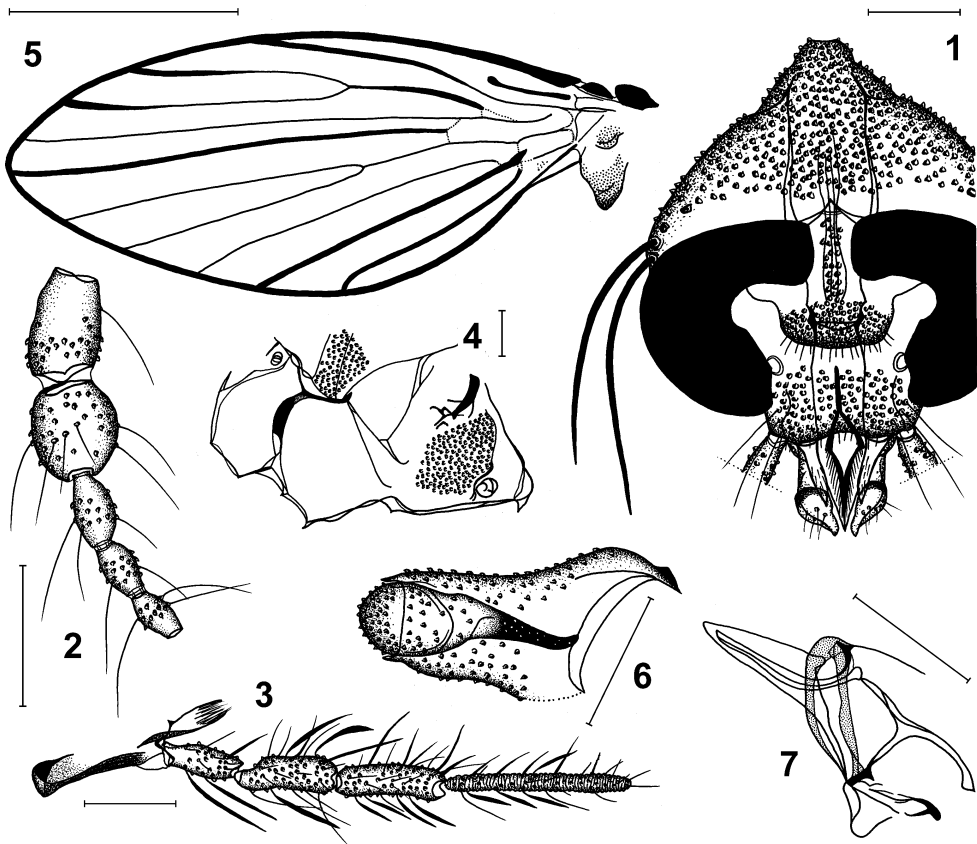
Berdeniella desnensis sp. nov.

(Figs. 1-15)

Type locality. Czech Republic, north-western Moravia, Hrubý Jeseník Mts., environs of Mravenečník Mt., Divoká Desná river near Tupý vrch Mt.

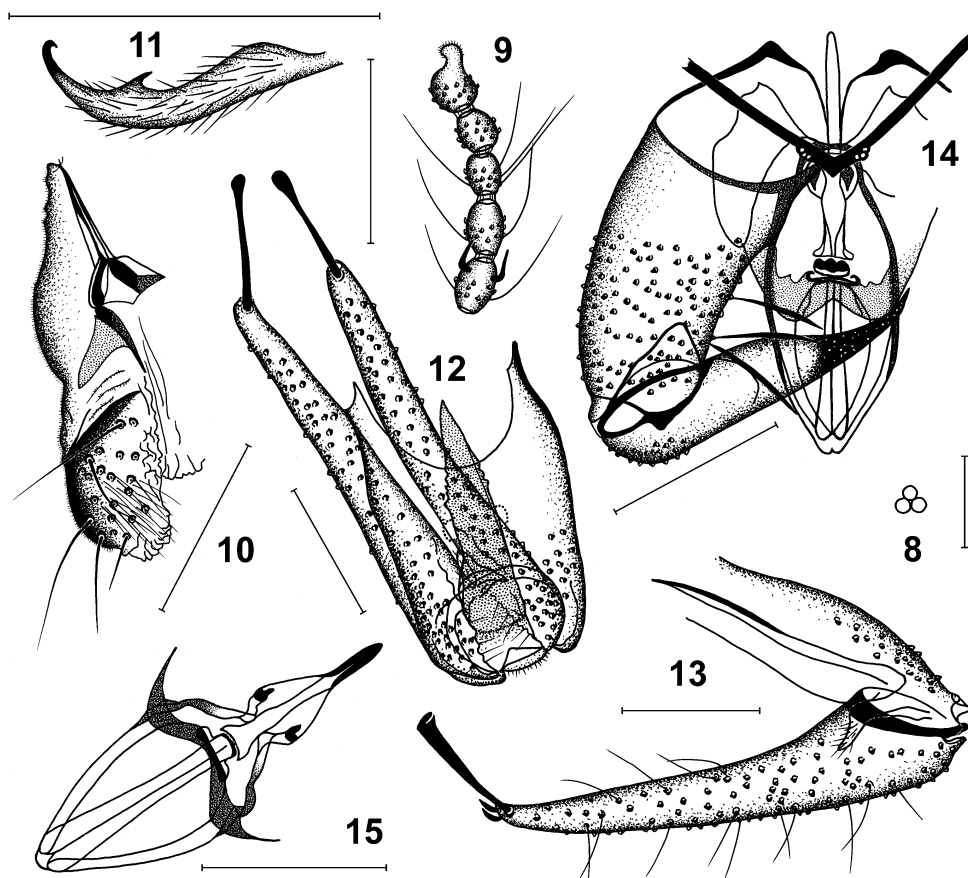
Type material. HOLOTYPE: ♂, CZECH REPUBLIC: MORAVIA bor.-occ., Jeseníky PLA, environs of Mravenečník Mt., Divoká Desná river near Tupý vrch Mt. (5868-5968), 1122 m a.s.l., small pumped storage reservoir, water-logged spots, rapids, 13.vi.1995, Loc. no. 131. Vegetation: *Fagus*, *Alnus*, *Aruncus*, Pteropsida. Slide with dissected specimen, Cat. No. 34285, Inv. No. 14783 (NMPC). PARATYPES: 26 ♂♂ (slides, NMPC). The same locality, date and collector, Cat. No. 34309-34310, Inv. No. 14807-14808 (2 ♂♂). Jeseníky PLA, Karlov pod Pradědem env., Malá Morávka (5969), meadow, peat bog, slope spring area, 6.vi.1994, Loc. no. 76. Vegetation: *Alnus*, *Filipendula*, *Urtica*, *Myosotis*, *Equisetum*, Musci. Cat. No. 34305-34308, Inv. No. 14803-14806 (4 ♂♂). Jeseníky PLA, Karlov pod Pradědem, Moravice river (5969), forest marshes, overhanging boughs of trees in river bed, 7.vi.1994 and 11.vi.1997, Loc. no. 79. Vegetation: *Picea*, *Acer*, *Sorbus*, *Rubus*, *Petasites*, *Filipendula*, *Equisetum*, *Caltha*, *Oxalis*, Musci, Apiaceae. Cat. No. 34297-34301, Inv. No. 14795-14799 (5 ♂♂). Jeseníky PLA, Kouty nad Desnou, Nový most bridge, Divoká Desná river (5868), shore plants, 13.vi.1995, Loc. no. 101. Vegetation: *Acer*, *Fraxinus*, *Fagus*, *Sorbus*, *Alnus*, *Rosa*, *Ribes*, *Petasites*, Pteropsida, Apiaceae. Cat. No. 34302-34304, Inv. No. 14800-14802 (3 ♂♂). Rýmařov, southern border of Jeseníky PLA (6069), field, drain, 11.vi.1994, Loc. no. 160. Vegetation: *Alnus*, *Sambucus*, *Filipendula*, *Urtica*, *Galium*, Apiaceae. Cat. No. 34311, Inv. No. 14809 (1 ♂). Rýmařov env., Dolní Moravice, Moravice river (6069), meanders, marshes, 15.vi.1994, Loc. no. 161. Vegetation: *Alnus*, *Fraxinus*, *Acer*, *Frangula*, *Salix*, *Corylus*, *Petasites*, *Filipendula*, *Lychnis*, *Veratrum*, *Valeriana*, *Myosotis*, *Caltha*, *Scirpus*, *Lysimachia*, *Aegopodium*, Pteropsida. Cat. No. 34286-34296, Inv. No. 14784-14794 (11 ♂♂). All material J. Ježek leg. (sweeping).

Description. Male. Eyes widely separated, frontoclypeus with oval patch of insertions of hairs connected with dorso-ventral stripe of irregularly arranged hair pits between upper apices of eyes, the latter consisting of four rows of facets (Fig. 1). Frontal suture developed, triangular. Minimum distance between eyes 2.5 times as wide as diameter of facet (Fig. 8). Ratios of distance of both tangential points of eyes (dorsal and ventral) to minimum width of frons 3.8 : 1, to facet diameter 9.5 : 1. Scape short (Fig. 2), almost cylindrical, slightly longer than pedicel, the latter hardly globular, 14 flagellomeres. Basal flagellomeres spindle-shaped, apical ones smaller, cask-shaped, terminal flagellomere almost globular, with very short excentric digitiform protuberance on top; a pair of ascoids as in Fig. 9. Length ratios of maxillary palpomeres 1 : 1.3 : 1.3 : 2.3, palpomere 4 annulate (Fig. 3). Terminal lobe of labium bulbous (Fig. 10), with many sensory setae. Ratio of maximum length of cibarium to length of epipharynx 2 : 1. Thoracic sclerites as in Fig. 4. Wings (Fig. 5) widely lancet-shaped, clear, 2.0-2.8 mm (2.8 mm in holotype) long, wing membrane bare, radial and medial forks complete; following veins or their parts strengthened: Sc, R_{2+3} , R_5 , M_4 and Cu completely, R_1 , R_2 and R_3 only in



Figs. 1-7. *Berdeniella desnensis* sp. nov., ♂. 1 – head; 2 – basal antennomeres; 3 – maxilla and maxillary palpus; 4 – lateral view of thoracic sclerites; 5 – wing; 6 – lateral view of gonocoxite and gonostyle; 7 – lateral view of aedeagal complex. Scales = 0.1 mm (Figs. 1-4, 6-7); 1 mm (Fig. 5).

their distal parts. Basal costal nodes distinct, well visible, Sc uninterrupted, golf-club shaped. M_3 and Cu with inconspicuous connection to M_4 . R_5 almost extending into apex of wing. Medial wing angle 163° (BCD). Indices of wing $AB : AC : AD = 4.3 : 4.3 : 4.3$; $BC : CD : BD = 1 : 1.6 : 2.5$. Maximum wing length equal to 2.4 times its maximum width and maximum length of haltere equal to 2.9 times its maximum width. Ratios of lengths of femora, tibiae and first tarsomeres: $P_1 = 1.8 : 1.9 : 1$; $P_2 = 2 : 2.3 : 1.1$; $P_3 = 2.3 : 2.8 : 1.2$. Fore claws (Fig. 11) inconspicuously S-shaped with two backward-pointing dents. Basal apodeme of aedeagal complex short and straight in dorsal view and slightly arched in lateral view. Aedeagal complex with characteristic inner structures (Figs. 7, 14). Gonocoxites (Figs. 6, 14) rather long, a little arched in dorsal view, without protuberances outside. Gonostyli inconspicuously shorter than gonocoxites, uniformly thick basally and afterwards abruptly tapering to apex. Epandrium (Figs. 12, 13) with two long diagonal and narrow fields of insertions of hairs posteriorly, paired apertures hardly visible. Sclerotized remainders of tergite and sternite 10 inside of



Figs. 8-15. *Berdeniella desnensis* sp. nov., ♂. 8 – facets; 9 – apical antennomeres; 10 – dorsal view of terminal lobe of labium; 11 – dorsal view of fore claw; 12 – dorsal view of epandrium and surstyli; 13 – same, lateral view; 14 – dorsal view of aedeagal complex and gonopode; 15 – dorso-caudal view of aedeagal complex. Scales = 0.1 mm (Figs. 8-10, 12-15); 0.05 mm (Fig. 11).

epandrium shaped as long triangular plate with wrinkled sides. Hypandrium (Fig. 14) narrow, formed by inconspicuous V-shaped strengthening in middle. Cells on both sides of the strengthening 2-4 in number, very small, white, and coherent. Hypoproct small, tongue-shaped, epiproct fold-like, both structures haired. Surstyli long, almost straight, a little thickened basally, conspicuously longer than epandrium, subapically with very long retinaculum and two minute sensory spines (Fig. 13).

Female. Unknown.

Differential diagnosis. *Berdeniella desnensis* sp. nov. resembles *B. chvojikai* Ježek, 1999; both species belong to the moderately small *B. freyi*-group established by Vaillant and characterized by two very small sensory spines near basis of very long retinaculum on apical surface

of surstylus; Figs. 12 and 13. The new species differs in the shape of hypandrium (Fig. 14), hardly visible paired epandrial apertures (Fig. 12), and basally narrow, distally broadening inner phallic sclerites (Figs. 14, 15). In males of *B. chvojikai*, the hypandrium has a conspicuous oblong strengthening in the middle and only one cell near both shorter sides of that, the paired epandrial apertures are conspicuous, and the inner phallic sclerites are broad basally and narrowing distally.

Etymology. Named after the type locality – Divoká Desná river in the Jeseníky PLA.

Bionomics. Unknown. Adults were collected on shores of meandering mountain streams and rivers, in highland drains and in slope spring areas.

Distribution. Czech Republic, northern Moravia.

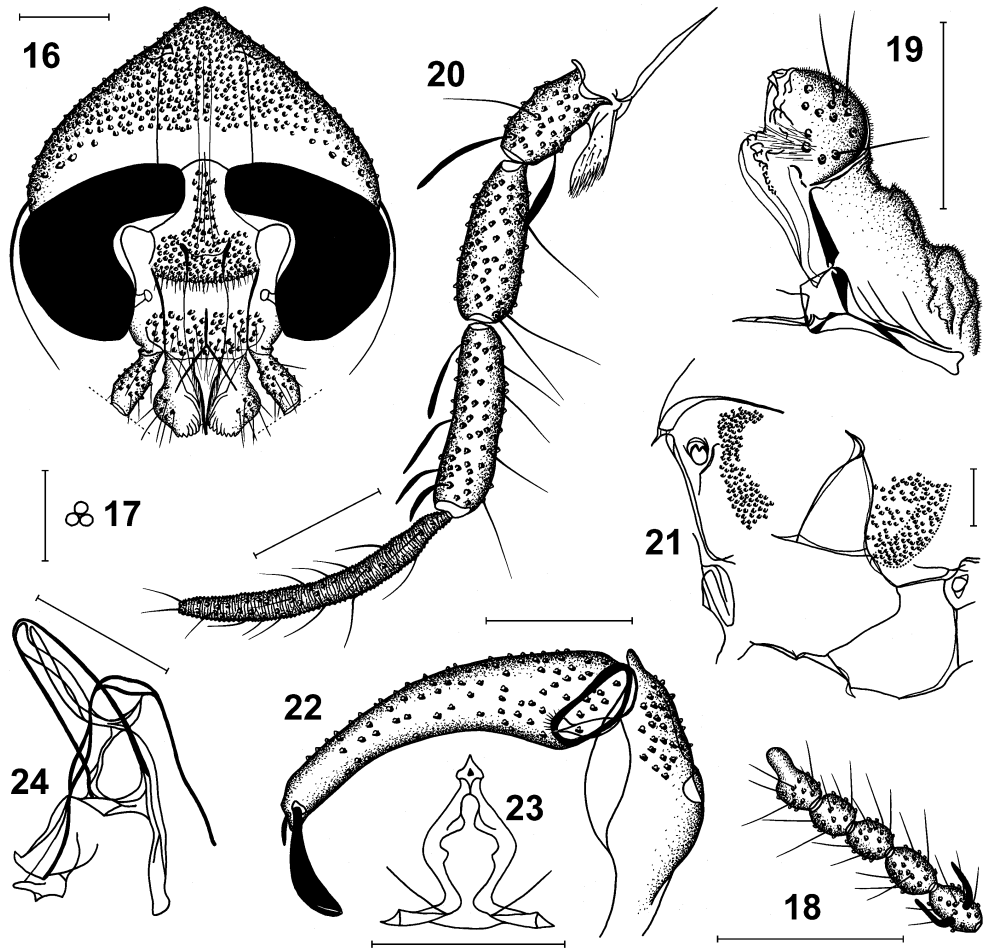
Berdeniella kocii sp. nov.

(Figs. 16-31)

Type locality. Czech Republic, north-western Moravia, Hrubý Jeseník Mts., environs of Branná, Kronfelzov (= Pastviny), Brusný potok brook near a hill (667.8 m a.s.l.).

Type material. HOLOTYPE: ♂, CZECH REPUBLIC: MORAVIA bor.-occ., Branná (NW vicinity) (5867), Kronfelzov (= Pastviny), Brusný potok brook near a hill (667.8 m a.s.l.), small forest flows, pastures, swamps, flocculated iron, 11.vii.1994, Loc. no. 25. Vegetation: *Picea*, *Alnus*, *Acer*, *Fraxinus*, *Rubus*, *Aruncus*, *Petasites*, *Mentha*, *Lysimachia*, Poaceae. Slide with dissected specimen, Cat. No. 34312, Inv. No. 14810 (NMPC). PARATYPES: 59 ♂♂ (slides, NMPC). The same locality as holotype [25], date and collector, Cat. No. 34319-34323, Inv. No. 14817-14821 (5 ♂♂). Branná (5867), limestone quarry, stream, 19.vii.1999, Loc. no. 14. Vegetation: *Salix*, *Acer*, *Alnus*, *Betula*, *Valeriana*, *Stachys*, *Petasites*, *Nasturtium*, *Calamagrostis*, *Urtica*, Apiaceae. Cat. No. 34324-34326, Inv. No. 14822-14824 (3 ♂♂). Between Branná and Ostružná (5868), margin of Jeseníky PLA, forest brook, 12.vii.1994, Loc. no. 16. Vegetation: *Picea*, *Fagus*, *Rosa*, *Rubus*, *Petasites*, *Mentha*, *Caltha*, *Urtica*, *Vaccinium*, Apiaceae, Musci. Cat. No. 34355-34357, Inv. no. 14853-14855 (3 ♂♂). Přední Alojzov (5868), drain near cottages, 3.viii.1994, Loc. no. 26. Vegetation: *Acer*, *Urtica*. Cat. No. 34358-34359, Inv. No. 14856-14857 (2 ♂♂). Horní Domašov env., Filipovice (settlement) (5868), stream, 23.vi.1999, Loc. no. 42. Vegetation: *Betula*, *Picea*, *Alnus*, *Salix*, *Fraxinus*, *Rubus*, *Petasites*, *Senecio*, *Aegopodium*. Cat. No. 34328-34334, Inv. No. 14826-14832 (7 ♂♂). Filipovice (5868), W of Úsvit rehabilitation centre, small forest brooks, 27.vi.1999, Loc. no. 44. Vegetation: *Picea*, *Fagus*, *Pteropsida*, *Myosotis*, *Nasturtium*. Cat. No. 34335-34337, Inv. No. 14833-14835 (3 ♂♂). Jeseník env. (5769), 1 km NE of Bílé skály Mt. (922.4 m a.s.l.), forest spring, boulders in stream spray zone, 25.vii.1994, Loc. no. 60. Vegetation: *Picea*, *Fagus*, *Betula*, *Senecio*, Marchantiopsida, Musci. Cat. No. 34314-34315, Inv. No. 14812-14813 (2 ♂♂). Karlov pod Pradědem env. (5969), Velká kotlina basin (lower part), forest swamps, streams, spring area and avalanche scar, 26.vii.-5.viii.1994, Loc. no. 81. Vegetation: *Picea*, *Fagus*, *Pinus*, *Betula*, *Alnus*, *Daphne*, *Ajuga*, *Asplenium*, *Oxalis*, *Juncus*, *Urtica*, *Asperula*, *Caltha*, *Equisetum*, *Viola*, *Petasites*, *Coeloglossum*, *Nasturtium*, *Vaccinium*, *Trollius*, *Telekia*, *Senecio*, Pteropsida, Apiaceae, Musci. Cat. No. 34360, Inv. No. 14858 (1 ♂). Kouty nad Desnou, Annín (5868), Hučivá Desná river, small forest tributary, debris, 18.viii.1999, Loc. no. 100. Vegetation: *Fagus*, *Acer*, *Betula*, *Fraxinus*, *Petasites*, *Aconitum*, *Senecio*, *Stachys*, *Caltha*, Pteropsida. Cat. No. 34313, Inv. No. 14811 (1 ♂). Lipová Lázně env. (5768), 1.5 km SE of railway station, small forest brook, swamps, mud wallow, drains and meadows, pastures, debris, 27.vii.1994, Loc. no. 107. Vegetation: *Picea*, *Fagus*, *Sorbus*, *Rubus*, Pteropsida, Marchantiopsida, Musci, Poaceae. Cat. No. 34344-34346, Inv. No. 14842-14844 (3 ♂♂). Lipová Lázně env. (5768), Javořícký potok brook near Javořík hill (772.1 m a.s.l.), forest swamps and mud wallows, 1.viii.1994, Loc. no. 111. Vegetation: *Alnus*, *Acer*, *Frangula*, *Sambucus*, *Petasites*, *Senecio*, *Impatiens*, *Urtica*, Pteropsida, Musci. Cat. No. 34338-34343, Inv. No. 14836-14841 (6 ♂♂). Lipová Lázně env. (5768), between Javořík hill (772.1 m a.s.l.) and Miroslav hamlet, small forest brook, 22.vii.1998, Loc. no. 113. Vegetation: *Picea*, *Fagus*, *Petasites*, *Senecio*, *Equisetum*, Pteropsida, Musci. Cat. No. 34349-34351, Inv. No. 14847-14849 (3 ♂♂). Lipová Lázně env. (5768), Na Pomezí cave env., small forest brook, 30.vii.1995, Loc. no. 114. Vegetation: *Picea*, *Acer*, *Alnus*, *Sorbus*, *Stachys*, *Equisetum*, *Veratrum*, *Oxalis*, Pteropsida, Musci. Cat. No. 34352-34354, Inv. No. 14850-14852 (3 ♂♂). Loučná

nad Desnou env., Vernířovice (5968), meadows, small brook, 21.vii.1995, Loc. no. 120. Vegetation: *Tilia*, *Acer*, *Alnus*, *Fraxinus*, *Sorbus*, *Ribes*, *Aruncus*, *Urtica*, *Senecio*, Poaceae, Musci. Cat. No. 34361-34370, Inv. No. 14859-14868 (10 ♂♂). Loučná nad Desnou env. (5968), Vlč sedlo saddle near Kluč Mt. (892 m a.s.l.) and Sedmidvory hamlet, small forest brook, 21.vii.1995, Loc. no. 122. Vegetation: *Alnus*, *Fraxinus*, *Sorbus*, *Equisetum*, *Senecio*, *Myosotis*, *Scirpus*, *Rumex*, Poaceae, Musci. Cat. No. 34371, Inv. No. 14869 (1 ♂). Rejvíz env. (5769), Bleskovec Mt., 871 m a.s.l., small forest brook, 25.vii.1994, Loc. no. 150. Vegetation: *Picea*, *Rubus*, *Vaccinium*, *Maianthemum*, Poaceae, Pteropsida, Marachantiopsida, Musci. Cat. No. 34316-34318, Inv. No. 14814-14816 (3 ♂♂). Šumperk env., Nový Malín (6068), upper part of Malínská rokle valley, forest brook, 2.viii.1995, Loc. no. 190. Vegetation: *Acer*, *Fraxinus*, *Stachys*, *Petasites*, *Aegopodium*, *Senecio*, Pteropsida. Cat. No. 34347-34348, Inv. No. 14845-14846 (2 ♂♂). All specimens J. Ježek leg. (by sweeping) except Loc. no. 81 (Malaise trap, Ištváněh leg.).



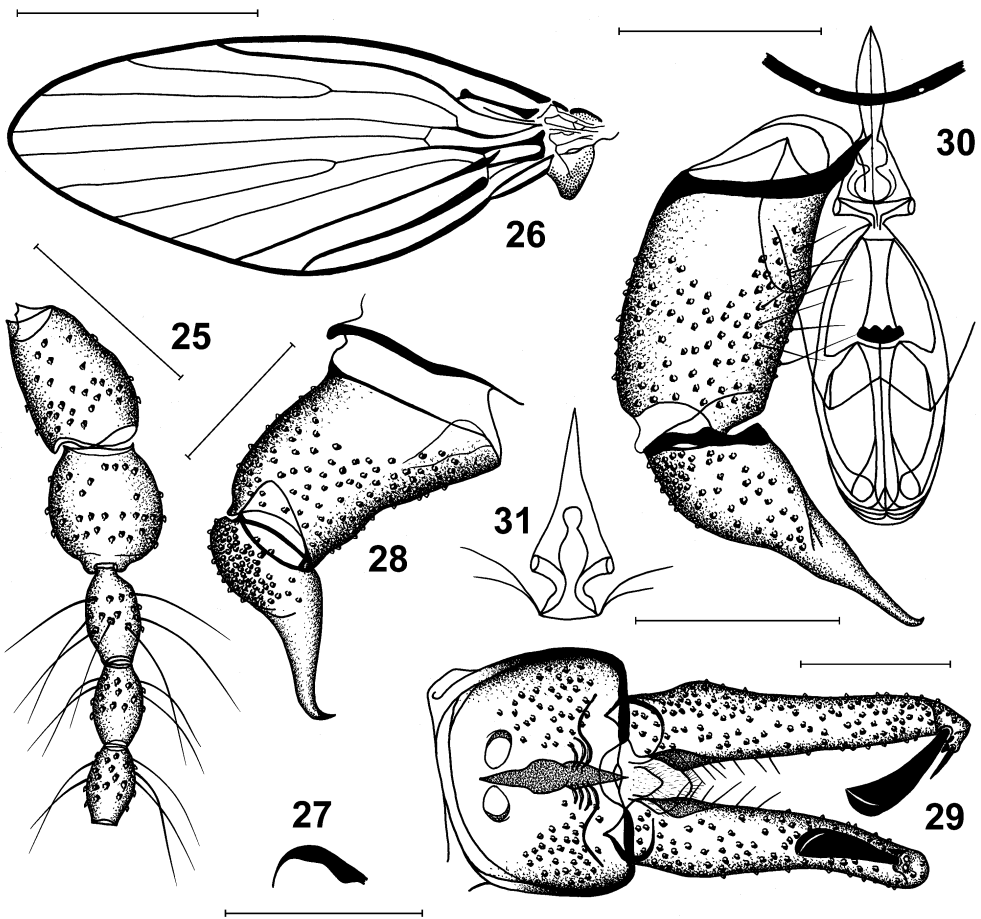
Figs. 16-24. *Berdeniella kocii* sp. nov., ♂. 16 – head; 17 – facets; 18 – apical antennomeres; 19 – dorsal view of terminal lobe of labium; 20 – maxilla and maxillary palpus; 21 – lateral view of thoracic sclerites; 22 – lateral view of epandrium and surstylus; 23 – dorsal view of apodemal cavity (variability); 24 – lateral view of aedeagal complex. Scales = 0.1 mm.

Description. Male. Eyes not touching, eye-bridge of four facet rows, frontoclypeus with ca rectangular patch of insertions of hairs connected with dorso-ventral stripe of irregularly arranged hair pits between dorsal margins of eyes (Fig. 16). Minimum distance between eyes 2.5 times as wide as diameter of facets. Ratios of distance of tangential points of ends of eyes to minimum width of frons 4.3 : 1, to facet diameter 10.8 : 1. Frontal suture simple, arched. Antenna with 16 antennomeres. Scape short (Fig. 25), somewhat widened distad. Pedicel almost globular. Basal flagellomeres spindle-shaped, distal ones smaller, cask-shaped. Terminal flagellomere with excentric, slightly prolonged protuberance (Fig. 18). Sensory filaments (ascoids) thin, simple, needle-shaped, bent basally, paired. Length ratios of maxillary palpomeres 1 : 1.5 : 1.7 : 2.6. Last palpomere annulate (Fig. 20). Terminal lobe of labium as in Fig. 19. Ratio of maximum length of cibarium to length of epipharynx 1.5 : 1. Thoracic sclerites as in Fig. 21. Wings (Fig. 26) pericomoid, lancet-shaped, clear, 2.1-2.9 mm (2.2 mm in holotype) long, wing membrane bare. Fusion of Sc with R_1 in one point, radial and medial forks complete. Following veins or their parts strengthened: Sc, R_1 , bases of R_4 and M_{1+2} , short basal part of M_4 and almost entire Cu. Basal costal nodes distinct, Sc uninterrupted. M_3 and Cu with connection to M_4 . R_5 extending distally and reaching wing margin a little behind apex of wing. Veins r-r, r-m and m-m visible. Medial wing angle 158° (BCD). Wing indices $AB : AC : AD = 4.4 : 4.4 : 4.2$; $BC : CD : BD = 1 : 1.6 : 2.5$. Maximum wing length equal to 2.5 times its maximum width. Maximum length ratio of haltere to its maximum width 2.5 : 1. Length ratios of femora, tibiae and first tarsal segments: $P_1 = 1.8 : 1.8 : 1$; $P_2 = 1.9 : 2.2 : 1.1$; $P_3 = 2 : 2.5 : 1.1$. Fore claws (Fig. 27) bent, form depending on angle of view, gradually tapering to apex. Basal apodeme of male genitalia straight and narrowed proximally to sharp end in dorsal view, excised in lateral view. Distal part of basal apodeme forming large double cavity (proximal cell very small) with two tubular rods at base (Figs. 23, 30, 31). Copulatory organ characteristic, inner lamellae separated (Fig. 30). Gonocoxite cylindrical, rather long and straight, without lateral protuberance. Gonostyle with small strengthening in tapered part, ending by small hook (Figs. 28, 30). Epandrium broad and short, with two large patches of separated hair areas and two elliptic openings proximally (Figs. 22, 29). Sclerotized remainders of tergite and sternite 10 inside of epandrium of characteristic shape. Hypandrium narrow (Fig. 30), bare, with two small white cells in middle. Epiproct small, triangular, haired. Hypoproct large, broad, tongue-shaped, with narrow basis, haired (Figs. 22, 29). Surstyli long, bent from lateral view, twice as long as epandrium, subapically with one moderately long retinaculum and two developed small sensory spines.

Female. Unknown.

Variability. Double cavity of distal part of basal apodeme of aedeagal complex and tubular rods somewhat variable in shape, depending on angle of view (Figs. 23, 30-31). Some paratypes have only one small sensory spine near basis of retinaculum on one surstylus (Inv. No. 14819, 14830, 14837, 14843 and 14858), however, the second surstylus always has two sensory spines (Fig. 29).

Differential diagnosis. *Berdeniella kocii* sp. nov. is characterized by the combination of the following characters: one point fusion of Sc with R_1 (Fig. 26), inner lamellae of aedeagal complex separated (Fig. 30), double cavity in the distal end of the basal apodeme of male genitalia developed (Figs. 23, 30-31), gonostyle with a small strengthening in the tapered part



Figs. 25-31. *Berdeniella kocii* sp. nov., ♂. 25 – basal antennomeres; 26 – wing; 27 – dorsal view of fore claw; 28 – lateral view of gonocoxite and gonostyle; 29 – dorsal view of epandrium and surstyli; 30 – dorsal view of aedeagal complex and gonopode; 31 – dorsal view of apodemal cavity (variability). Scales = 0.1 mm (Figs. 25, 27-31); 1 mm (Fig. 26).

(Fig. 30), hypandrium with only two white cells in the middle (Fig. 30), and two developed small sensory spines near the basis of retinaculum (Figs. 22, 29). *Berdeniella gardinii* Salamanna & Raggio, 1984, has Sc without a connection to R_1 , inner lamellae of the aedeagal complex are fused, the cavity in the distal end of basal apodeme is missing, the gonostyle is not strengthened in the middle, the hypandrium has four cells, and the surstyle with only one small sensory spine near the basis of retinaculum.

Etymology. The new species is dedicated to Karel Kočí (Management of the Jeseníky PLA, Jeseník – Bukovice, Czech Republic), who kindly supported my research in north-western Moravia for many years.

Bionomics. Unknown. The adults were collected on shores of mountain rivers and streams, meadow brooks, pasture drains and forest swamps, as well in wet avalanche scars.

Distribution. Czech Republic, northern Moravia.

Faunistics

List of localities

1. Bělá pod Pradědem (NW) (5868), Jeseníky PLA; wet meadows, swamps and settlement brooks.
2. Bělá pod Pradědem (5869), Bělá river, Jeseníky PLA; upper part of settlement.
3. Bělá pod Pradědem env. (5869), Borový potok brook near a hill (641.3 m a.s.l.), Jeseníky PLA; forest swamps.
4. Bělá pod Pradědem env. (5868), NE of Bršť hill (695 m a.s.l.), Jeseníky PLA; small forest brook, meadows, swamps, debris.
5. Bělá pod Pradědem env. (5868), Bystrý potok stream (980 m a.s.l.) near Šumný Mt. (1073 m a.s.l.) and Šumárník hovel, Jeseníky PLA; slope springs.
6. Bělá pod Pradědem env. (5869), Domašov, between Borový potok brook and Bělá river, Jeseníky PLA; forest spring on a slope.
7. Bělá pod Pradědem env. (5868), Domašov, Keprnický potok brook, Výrovka hovel (630.8 m a.s.l.), Jeseníky PLA; rapids, stones.
8. Bělá pod Pradědem env. (5869), Domašov, Šumný potok brook (642.7 m a.s.l.) between Malé Bradlo Mt. (1044 m a.s.l.) and Smrčí vrch Mt. (1026 m a.s.l.), Jeseníky PLA; spring area, swamps, drains.
9. Bělá pod Pradědem env. (5868), Domašovský kopec hill (663 m a.s.l.), Jeseníky PLA; pastures with large cairn and shrubs, small brook, marshes.
10. Bělá pod Pradědem env. (5869), Horní Domašov, Jeseníky PLA; small dried-up pond.
11. Bělá pod Pradědem env. (5868), Rudohorská chata cottage near Točnick Mt. (1143 m a.s.l.), Jeseníky PLA; forest drain.
12. Bělá pod Pradědem env. (5768), Šumný Mt. (1073 m a.s.l.), SW of Šumárník hovel, Jeseníky PLA; spring area, *Fagetum*.
13. Branná (5867), churchyard; in bark cracks on a beech.
14. Branná (5867), limestone quarry; stream.
15. Branná (5868), river, border of Jeseníky PLA; river at railway station.
16. Branná env. (5868), between Branná and Ostružná, border of Jeseníky PLA; forest brook.
17. Branná env. (5867-5868), Elba (= Labe near Nové Losiny); pastures, small brook.
18. Branná env. (5868), Františkov hamlet, Pod slunečnou strání, Hučava brook, Jeseníky PLA; main flow and tributaries.
19. Branná env. (5868), Františkov hamlet, Hučava brook, Jeseníky PLA; mud wallows and small tributaries.
20. Branná env. (5868), Hučava brook near hill 984.8 m a.s.l., Jeseníky PLA; forest clearings, marshes.
21. Branná env. (5868), Hučava brook near Nová Branná, Jeseníky PLA; forest, mud wallow.
22. Branná env. (5868), Josefová, Jeseníky PLA; wet meadow.
23. Branná env. (5868), Nové Losiny, border of Jeseníky PLA; forest brook, debris, decayed haycock.
24. Branná env. (5868), viewpoint 786 m a.s.l., between Nové Losiny and Přemyslov, border of Jeseníky PLA; small brook.
25. Branná (NW vicinity) (5867), Kronfelzov (= Pastviny), Brusný potok brook near hill 667.8 m a.s.l.; small forest flows, pastures, swamps, flocculated iron.
26. Branná env. (5868), Přední Alojzov, Jeseníky PLA; cottages, drain.
27. Branná env. (5868), Sklenský vrch hill (866.1 m a.s.l.) near Nové Losiny; pasture, small brook.
28. Branná env. (5867), Šléglov; forest edge, pastures, brook, spring area.
29. Branná env. (5867), between Šléglov and Vikantice; pastures, brook, swamps, *Alnetum*.
30. Branná env. (5868), Zadní Alojzov, Jeseníky PLA; small forest brook.
31. Hanušovice env. (5867-5967), Chmurná hill, 658 m a.s.l.; forest slope spring area.

32. Hanušovice env. (5967), Kopřivná, 615 m a.s.l.; brook in settlement.
33. Hanušovice env. (5967), Nový hrad castle ruin near Raškov; small forest brook, log-houses.
34. Hanušovice env. (5967), Osikov near Kopřivná, Ořešník hill, 702.6 m a.s.l.; forest edge, meadow spring area.
35. Hanušovice env. (5967), Prameny hamlet between Kopřivná and Žárová; meadows, brook.
36. Heřmanovice env. (5870), Drakov (forester's office) near Mlýnský vrch hill (713 m a.s.l.), Černá Opava river, Jeseníky PLA; small brook and pools, meadows, decayed haycock.
37. Heřmanovice env. (5770), hill 806.6 m a.s.l., W of the settlement, Jeseníky PLA; meadows, spring and drain.
38. Heřmanovice env. (5869), Slučí potok brook near Rovný vrch hill (793 m a.s.l.) (vicinity of Drakov – forester's office), Jeseníky PLA; forest brook.
39. Heřmanovice env. (5869), Sokolí potok brook near Quinburk castle, Jeseníky PLA; forest brook.
40. Horní Domašov env. (5869), Borový potok brook between Zaječí hora Mt. (1012 m a.s.l.) and Malé Bradlo (1044 m a.s.l.), Jeseníky PLA; *Fagetum*, slope swamps.
41. Horní Domašov env. (5869), Drátovna, Červenohorský potok brook, Jeseníky PLA; forest swamps.
42. Horní Domašov env. (5868), Filipovice (settlement), Jeseníky PLA; stream.
43. Horní Domašov env. (5868), Filipovice, Černý potok brook, Jeseníky PLA; *Alnetum*, slope swamps.
44. Horní Domašov env. (5868), Filipovice, W of Úsvit rehabilitation centre, Jeseníky PLA; small brooks.
45. Horní Domašov env. (5868), Filipovice, Filipovické louky meadows, Jeseníky PLA; forest edge, marshes, *Alnetum*, flocculated iron (Fig. 32).
46. Horní Domašov env. (5868), NW of Filipovice, hill 874.4 m a.s.l., Jeseníky PLA; forest spring areas, small streams, crib.
47. Horní Domašov env. (5868), Sněžná kotlina basin near Červená hora Mt. (1337 m a.s.l.), Černý potok brook, Jeseníky PLA; forest swamps (near crib).
48. Horní Domašov env. (5869), Zaječí hora Mt. (1012 m a.s.l.), Jeseníky PLA; forest path with horse excrement.
49. Javorník env. (5668), between Horní Fořt and Dolní Fořt, Červený potok brook; fields.
50. Javorník env. (5567-5667), Komáří dolinka valley near Sedm Křížů, Rychlebské hory Mts.; forest brook and small pond.
51. Javorník env. (5567), Panský potok brook near Horní Hoštice; *Alnetum*, fields, mud wallow.
52. Javorník env. (5567), Pastviska, Rychlebské hory Mts.; drain.
53. Javorník env. (5668), Pelnářův důl valley near Uhelná; field drain and small pond.
54. Javorník env. (5668), Vlčice; forest edge, fields, small brook.
55. Javorník env. (5567), Zaječí vrch hill (498.8 m a.s.l.), small chapel, Rychlebské hory Mts.; wet meadow.
56. Jeseník (town) (5769), Bělá river, Jeseníky PLA; mountain flow.
57. Jeseník (town) (5769), Řecký pramen spring, Jeseníky PLA; drain.
58. Jeseník env. (5769), Adolfovice, shooting range, Šumný potok brook, Jeseníky PLA; forest swamps.
59. Jeseník env. (5768), Adolfovice, Javořický potok brook, V Mlýnkách, Jeseníky PLA; swamps.
60. Jeseník env. (5769), 1 km NE of Bílé skály Mt. (922.4 m a.s.l.), Jeseníky PLA; forest spring and stream, wet stones.
61. Jeseník env. (5768), Bobrovník, Jeseníky PLA; wet meadows, dog training area.
62. Jeseník env. (5769), Bukovice, Bukovický vrch hill (557 m a.s.l.), Jeseníky PLA; small stream, wet meadows, drainages and swamps.
63. Jeseník env. (5769), Bukovice, Mlýnský rybník pond, Jeseníky PLA; banks of water reservoir.
64. Jeseník env. (5769), Chebží near Česká Ves, Jeseníky PLA; swamps, forest brook.
65. Jeseník env. (5769), near Čertovy kameny viewpoint (693 m a.s.l.) near Česká Ves, Jeseníky PLA; small forest brook (585 m a.s.l.).
66. Jeseník env. (5769), Stará cesta footpath between Dětrichov and Rejvíz, Jeseníky PLA; small stony stream at 573 m a.s.l.
67. Jeseník env. (5769), 1 km NE of Mýtinka near Dětrichov, Jeseníky PLA; forest clearing, spring area.
68. Jeseník env. (5869), Dolní Domašov, Keprnický potok brook, Jeseníky PLA; right tributary.
69. Jeseník env. (5768-5769), Lázně Jeseník, Rychlebské hory Mts.; hotel.
70. Jeseník env. (5769), Pekelník hill (656 m a.s.l.) near Česká Ves, Jeseníky PLA; forest edge, soiled footpath, marshes.

71. Jeseník env. (5769), Zlatý Chlum Mt. (875.3 m a.s.l.), Jeseníky PLA; forest clearings, drain.
72. Karlov pod Pradědem env. (5970), hill 752 m a.s.l. near Podlesí, Jeseníky PLA; forest swamps and wet meadows.
73. Karlov pod Pradědem env. (5969), Mlýnský potok brook near Klobouk Mt. (860 m a.s.l.), Jeseníky PLA; forest, sources.
74. Karlov pod Pradědem env. (5969), between Kotelní potok brook (Malý Kotel area) and Volárka brook (Malý Máj area), Jeseníky PLA; forest swamps.
75. Karlov pod Pradědem env. (5969), Lesní Mlýn near Dolní Moravice, border of Jeseníky PLA; marshes, flocculated iron.
76. Karlov pod Pradědem env. (5969), Malá Morávka, Jeseníky PLA; slope spring area, meadow, peat bog.
77. Karlov pod Pradědem env. (5969), between Malá Morávka and Rudná pod Pradědem; small brook, marshes.
78. Karlov pod Pradědem env. (5969), Mlýnský potok brook near Dolní Moravice, border of Jeseníky PLA; swamps.
79. Karlov pod Pradědem (5969), Moravice river, Jeseníky PLA; marshes, overhanging boughs of trees in river bed.
80. Karlov pod Pradědem env. (5969), Moravice river 1-3 km SE of Velká kotlina basin, Jeseníky PLA; forest slope spring areas.
81. Karlov pod Pradědem env. (5969), Velká kotlina basin (lower part), Jeseníky PLA; forest swamps, streams, spring area and avalanche scar (Fig. 34).
82. Karlov pod Pradědem env. (5969), Velká kotlina basin (upper part) near Vysoká hole Mt. (1464 m a.s.l.), Jeseníky PLA; spring area, avalanche scar.
83. Karlov pod Pradědem env. (5969), Železný vrch hill (859 m a.s.l.) near Malá Morávka, Jeseníky PLA; slope spring area, meadows, small brook, marshes.
84. Karlova Studánka env. (5969), garden of the Museum of Geology and Svätý Hubert chapel near a top 1002.9 m a.s.l., Jeseníky PLA; forest spring area, small brook, meadow and peat bogs.
85. Karlova Studánka env. (5969), Hvězda hotel, Jeseníky PLA; forest swamps.
86. Karlova Studánka env. (5869), Jelení bučina beech wood near Vidly, Jeseníky PLA; approximately 900 m a.s.l.
87. Karlova Studánka env. (5969), Kopřivový vrch hill (876 m a.s.l.) near Malá Morávka, Jeseníky PLA; small forest brooks, swamps.
88. Karlova Studánka env. (5970), Kyselka (677 m a.s.l.) near Suchá Rudná, Jeseníky PLA; forest brook, spring of mineral water.
89. Karlova Studánka env. (5970), Suchá Rudná, Stará Voda brook, Jeseníky PLA; forest brook, drain and swamps.
90. Karlova Studánka env. (5969), Štola pod Jelení cestou footpath, Hradecký most bridge, Jeseníky PLA; brook, marshes, flocculated iron.
91. Keprník Mt. (5868), 1423 m a.s.l., E slope, Šerák – Keprník NR, Jeseníky PLA; spring area.
92. Keprník Mt. (5868), 1423 m a.s.l., NE of Keprník hut, Jeseníky PLA; spring area.
93. Keprník Mt. env. (5868), near Trojmezí (1315.5 m a.s.l.), border of Šerák – Keprník NR, 958.3 m a.s.l., Jeseníky PLA; stony beds of forest brooks.
94. Klepáčov env., Skřítek NNR (5968-5969-6068-6069), Jeseníky PLA; forest clearings, peat bogs, swamps.
95. Klepáčov env. (5969), Zelené kameny Mt. (1179 m a.s.l.), Jeseníky PLA; forest swamps.
96. Klepáčov env. (5968), Ztracené skály Mt. (1151 m a.s.l.), Jeseníky PLA; swamps.
97. Klepáčov env. (5969), Žlutý potok brook near Skřítek NNR, Jeseníky PLA; swamps, hut.
98. Kouty nad Desnou (5868), Dlouhé Stráně hotel env., Jeseníky PLA; dried-up drain and shrubs near road.
99. Kouty nad Desnou (5868), Divoká Desná river, 1 km E of railway station, Jeseníky PLA; main flow, small pond and spring area.
100. Kouty nad Desnou (5868), Annín, Hučivá Desná river, Jeseníky PLA; small tributary forest brook of river, debris.
101. Kouty nad Desnou (5868), Nový most bridge, Divoká Desná river, Jeseníky PLA; shore vegetation.
102. Kouty nad Desnou env. (5868), Plchova soutěska ravine, Divoká Desná river, Jeseníky PLA; slope spring area, drain.
103. Kouty nad Desnou env. (5868), Přemyslov, 620 m a.s.l., border of Jeseníky PLA; small forest brook, spring area, marshes, pastures.

104. Kouty nad Desnou (eastern part) (5868), Smutný žleb gorge, Jeseníky PLA; spring area and brook, debris.
105. Kouty nad Desnou env. (5868), Hučivá Desná river near Šindelová hora Mt. (1123 m a.s.l.), Jeseníky PLA; cavities on wet rocky wall.
106. Kouty nad Desnou env. (5868), Rejhotice, border of Jeseníky PLA; meadows, marshes.
107. Lipová Lázně env. (5768), 1.5 km SE of railway station, Jeseníky PLA; small forest brook, swamps, mud wallow, drains and meadows, pastures, debris.
108. Lipová Lázně env. (5768), Lví hora Mt. (1040.1 m a.s.l.), Dlouhá dolina valley near Horní Lipová, Rychlebské hory Mts.; spring area, brook.
109. Lipová Lázně env. (5768), Horní Lipová, near railway station, Rychlebské hory Mts.; small forest brook.
110. Lipová Lázně env. (5768), Horní Lipová, Sněhulák hill (912 m a.s.l.), Jeseníky PLA; small brook, *Fagetum*, crib.
111. Lipová Lázně env. (5768), Javořický potok brook near Javořík hill (772.1 m a.s.l.), Jeseníky PLA; forest swamps and mud wallows.
112. Lipová Lázně env. (5768), Javořický potok brook between Javořík hill (772.1 m a.s.l.) and Bezný hill (684.6 m a.s.l.), Jeseníky PLA; forest swamps.
113. Lipová Lázně env. (5768), between Javořík hill (772.1 m a.s.l.) and Míroslav hamlet, Jeseníky PLA; small forest brook.
114. Lipová Lázně env. (5768), Na Pomezí cave env., Rychlebské hory Mts.; small forest brook.
115. Lipová Lázně env. (5768), Toč hill (620 m a.s.l.), northern border of Jeseníky PLA; pastures, ski areal, small brook, marshes.
116. Loučná nad Desnou (5968), Desná river near railway station, western border of Jeseníky PLA; stony river bed.
117. Loučná nad Desnou env. (5868), Jelení skok Mt. (851.9 m a.s.l.); small forest brook, swamps, slope spring area.
118. Loučná nad Desnou env. (5968), Sedmidvory hamlet, 610.5 m a.s.l., Kamenitý potok brook, Jeseníky PLA; swampy shores.
119. Loučná nad Desnou env. (5968), Třiramenný potok brook, Jeseníky PLA; swampy shores.
120. Loučná nad Desnou env. (5968), Vernířovice, Jeseníky PLA; meadows, small brook.
121. Loučná nad Desnou env. (5968), between Vernířovice and Maršíkov, Zadní vrch hill (607 m a.s.l.), Jeseníky PLA; wet meadows, drain.
122. Loučná nad Desnou env. (5968), Vlčí sedlo saddleback near Kluč Mt. (892 m a.s.l.) and Sedmidvory hamlet, Jeseníky PLA; small forest brook.
123. Medvědí vrch Mt. (1216 m a.s.l.) env. (5869), Kristovo rozloučení wooden cross near Orlík Mt. (1204 m a.s.l.), Šumný potok brook, Jeseníky PLA; swampy shores.
124. Medvědí vrch Mt. (1216 m a.s.l.) env. (5869), unnamed mountain 1051.2 m a.s.l. near Orlík Mt. (1204 m a.s.l.), Jeseníky PLA; spring area in forest clearing.
125. Medvědí vrch Mt. (1216 m a.s.l.) env. (5869), Orlík Mt. (1204 m a.s.l.), Jeseníky PLA; spring area.
126. Medvědí vrch Mt. (1216 m a.s.l.) env. (5869), between Orlík Mt. (1204 m a.s.l.) and Velké Bradlo Mt. (1049.7 m a.s.l.), Jeseníky PLA; alpine spring areas.
127. Medvědí vrch Mt. (1216 m a.s.l.) env. (5869), Ostruha Mt. (1022 m a.s.l.), Jeseníky PLA; forest with fallen trees, stony slope spring area, drains.
128. Medvědí vrch Mt. (1216 m a.s.l.) env. (5869), between Ostruha Mt. (1022 m a.s.l.) and Jelení loučky Mt. (1205 m a.s.l.), Jeseníky PLA; forest clearings, brook, small wet meadows, slope spring areas, marshes.
129. Medvědí vrch Mt. (1216 m a.s.l.) env. (5869), Šumný potok brook at bridge SW of Orlík Mt. (1204 m a.s.l.), Jeseníky PLA; swampy shores.
130. Medvědí vrch Mt. (1216 m a.s.l.) env. (5869), Šumný potok brook between Velké Bradlo Mt. (1049.7 m a.s.l.) and Ostruha Mt. (1022 m a.s.l.), Jeseníky PLA; slope rocks.
131. Mravenečník Mt. (1343 m a.s.l.) env. (5868-5968), Divoká Desná river near Tupý vrch Mt. (1122 m a.s.l.), Jeseníky PLA; small pumped storage reservoir, waterlogged spots.
132. Mravenečník Mt. (1343 m a.s.l.) env. (5968), Tetřeví chata hut, Jeseníky PLA; the overhanging tufts of plants on the shore of a stream with stony bed.
133. Mravenečník Mt. (1343 m a.s.l.) env. (5868-5968), Tupý vrch Mt. (1122 m a.s.l.), Jeseníky PLA; swamps with planted spruces.

134. Praděd Mt. (1491 m a.s.l.) env. (5969), Alfrédka hovel near Jelenka Mt. (1206 m a.s.l.), Jeseníky PLA; spring area and small forest brook.
135. Praděd Mt. (1491 m a.s.l.) env. (5969), vicinity of Barborka hostel, Jeseníky PLA; slope spring areas.
136. Praděd Mt. (1491 m a.s.l.) env. (5969), vicinity of Břidličná hora Mt. (1358.2 m a.s.l.), Jelení studánka spring, Jeseníky PLA; mountain drain.
137. Praděd Mt. (1491 m a.s.l.) env. (5869-5969), Česnekový důl valley, Česnekový potok brook, Jeseníky PLA; stream shores.
138. Praděd Mt. (1491 m a.s.l.) env. (5969), Divoký důl valley near Divoký kámen Mt. (1285 m a.s.l.), Jeseníky PLA; stream, slope cascades of forest swamps, 850 m a.s.l.
139. Praděd Mt. (1491 m a.s.l.) env. (5969), Františkova myslivna forester house and Hubertka hovel, Jeseníky PLA; *Fagus-Acer* wood, swamps.
140. Praděd Mt. (1491 m a.s.l.) env. (5869), Kamzičí vrch Mt. (1170 m a.s.l.), Střední Opava river, Jeseníky PLA; forest clearings, river sources.
141. Praděd Mt. (1491 m a.s.l.) env. (5969), near Ovčárna hostel, Jeseníky PLA; forest marshes near ski areal.
142. Praděd Mt. (1491 m a.s.l.) env. (5969), waterfalls of Bílá Opava river between Ovčárna hostel and Karlova Studánka, Jeseníky PLA; wet rocky walls and spring areas, hygropetric zones, waterlogged spots and small streams.
143. Praděd Mt. (1491 m a.s.l.) env. (5869), Střední Opava river near Sokol Mt. (1187 m a.s.l.), Jeseníky PLA; forest clearings, spring areas.
144. Praděd Mt. (1491 m a.s.l.) env. (5869), Švýčárna hovel near Velký Jezerník Mt. (1306.8 m a.s.l.), Jeseníky PLA; forest stream, spring area and swamps.
145. Praděd Mt. (1491 m a.s.l.) env. (5869), Videlské sedlo saddleback (930.1 m a.s.l.) near Vidly, Jeseníky PLA; forest spring area.
146. Praděd Mt. (1491 m a.s.l.) env. (5869), Vidly, Střední Opava river near Svatá Hedvika chapel, Jeseníky PLA; wet scree slope.
147. Ramzová env. (5768), Černý potok brook near Brousek Mt. (1115.9 m a.s.l.) and Smrk Mt. (1125 m a.s.l.), Rychlebské hory Mts.; spring area.
148. Ramzová env. (5768), Ramzovské sedlo saddleback, 760 m a.s.l., near railway station, border of Jeseníky PLA and Rychlebské hory Mts.; small forest brook, wet meadow, marshes.
149. Rejvíz (5769), Jeseníky PLA; marshes in settlement.
150. Rejvíz env. (5769), Bleskovec Mt. (871 m a.s.l.), Jeseníky PLA; small forest brook.
151. Rejvíz env. (5769), Chlapecké kameny Mt. (856.6 m a.s.l.), Jeseníky PLA; spring area, inflow of large peat bog area.
152. Rejvíz env. (5769), between Dolní Údolí and Horní Údolí, Olešnica brook, border of Jeseníky PLA; forest spring areas, pastures, marshes.
153. Rejvíz env. (5769), Opavská chata hut, 888.9 m a.s.l., near Kazatelny Mt. (925 m a.s.l.), Černá Opava river, Jeseníky PLA; forest spring area and swamps.
154. Rejvíz env. (5769), Černá Opava river, 1 km SW of Opavský most bridge, Jeseníky PLA; tributaries, forest swamps.
155. Rejvíz env. (5769), Orlí vrch hill (772 m a.s.l.), Jeseníky PLA; forest drain.
156. Rejvíz env. (5769), Podzámecký potok brook, 731.3 m a.s.l., near Koberštejn castle ruine (Zámecký vrch hill, 934 m a.s.l.), Jeseníky PLA; forest swamps.
157. Rejvíz env. (5769), Sporný vrch hill (756.3 m a.s.l.) near Chebzí, Jeseníky PLA; small forest brook.
158. Rejvíz env. (5769), Starý Rejvíz, Malé mechové jezírko peat bog, Jeseníky PLA; outflow.
159. Rejvíz env. (5769), Velké mechové jezírko peat bog, SW of Rejvíz, Jeseníky PLA; outflow, forest marshes (near unnamed hill 795.2 m a.s.l.), wet meadow.
160. Rýmařov (6069), southern border of Jeseníky PLA; field, drain.
161. Rýmařov env. (6069), Dolní Moravice, Moravice river; meanders, marshes.
162. Rýmařov env. (6069), Horní Moravice, Moravický potok brook, Jeseníky PLA; swamps.
163. Rýmařov env. (6069), Jamartice, Podolský potok brook; new sediments, pastures.
164. Rýmařov env. (6070), Malé Štáhle, Moravice river; marshes.
165. Rýmařov env., Stará Ves (western part) (6069), Jeseníky PLA; *Alnetum*, brook, forest swamps, wet meadows.
166. Rýmařov env. (6069), Stará Ves, Růžový potok brook, Jeseníky PLA; marshes.



Fig. 32. Filipovické louky meadows near Horní Domašov, swamps and brooks – locality of *Berdeniella kocii* sp. nov. Photo Lenka Niklová.

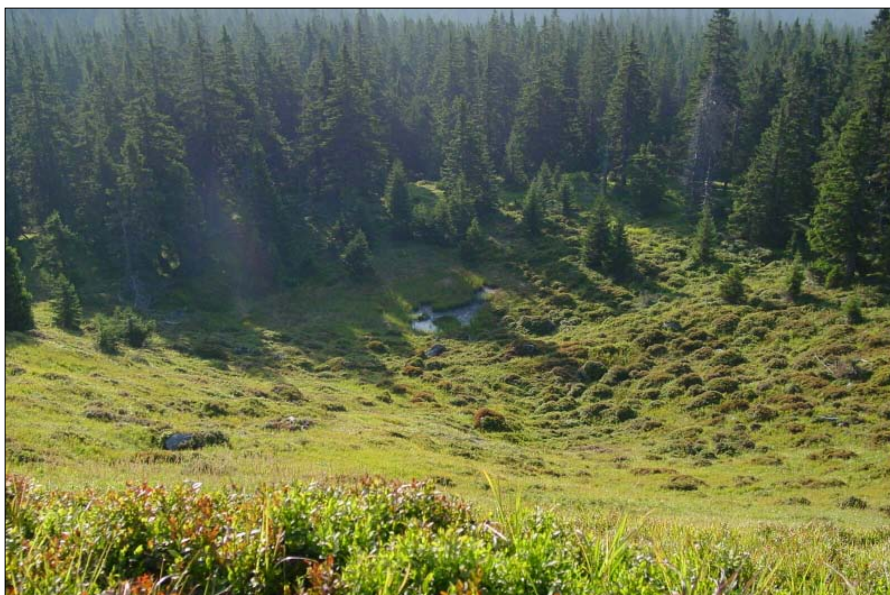


Fig. 33. Mezikotlí (woodlands between Malá and Velká kotlina basins) – characteristic scenery of Jeseníky PLA. Photo Michal Ulrych.



Fig. 34. Velká kotlina basin (upper part, avalanche scars) with snow fields in June – locality of *Berdeniella kocii* sp. nov. Photo Michal Ulrych.



Fig. 35. Vysoký vodopád waterfall near Velký Jezerník Mt. – Marchantiopsida and moss in the spray zone, suitable for development of immature stages of several genera of psychodine moth flies. Photo Michal Ulrych.

167. Rýmařov env. (6069), Stará Ves, Staroveský potok brook, Jeseníky PLA; forest swamps.
168. Rýmařov env. (6069), Žďárský Potok, Slatinný potok brook, Jeseníky PLA; forest stream.
169. Rýmařov env. (6069), Žďárský Potok, Stříbrný potok brook near Ostroh hill (802 m a.s.l.), Jeseníky PLA; forest swamps.
170. Staré Město pod Sněžníkem (town) (5867), Krupá river; shore vegetation.
171. Staré Město pod Sněžníkem env. (5867), between Staré Město pod Sněžníkem and Hajmrlův; small brook.
172. Staré Město pod Sněžníkem env. (5867), S of Hadcová hill (626.6 m a.s.l.) near Nový Rumburk; small brook.
173. Staré Město pod Sněžníkem env. (5767-5867), Květná, Krupá brook; swamps.
174. Staré Město pod Sněžníkem env. (5867), Malé Vrbno, Telčava brook near Moravia hotel; forest swamps.
175. Staré Město pod Sněžníkem env. (5867), Nový Rumburk, Stříbrník brook; shore vegetation.
176. Staré Město pod Sněžníkem env. (5867), Stříbrnice; slope spring area, drain.
177. Staré Město pod Sněžníkem env. (5767), Velké Vrbno near Ostružná, Vrbenský potok brook; wet meadows.
178. Šumperk env. (6068), Bedřichov, southern border of Jeseníky PLA; meadow spring area.
179. Šumperk env. (5967), Hostice, Hostický potok brook; weirs.
180. Šumperk env. (6068), Hraběšice, border of Jeseníky PLA; brook in settlement.
181. Šumperk env. (6068), between Hraběšice and Rudoltice, border of Jeseníky PLA; meadows, swamps.
182. Šumperk env. (6068), Hrabíšín; meadows, fields and marshes near railway station.
183. Šumperk env. (5967), Kokeš hill (510.6 m a.s.l.) between Šumperk and Bratrušov; forest spring.
184. Šumperk env. (6068), Krásné, border of Jeseníky PLA; forest swamps, brook.
185. Šumperk env. (6068), Krásné water reservoir; inflow.
186. Šumperk env. (6168), Libina; outflow of small pond, cottage area.
187. Šumperk env. (5968), Desná river between Maršíkov and Velké Losiny, border of Jeseníky PLA; shore vegetation.
188. Šumperk env. (6068), Mladoňov, Na Samotě, southern border of Jeseníky PLA; brook, marshes, pastures.
189. Šumperk env. (6068), Nový Malín, southern margin of Jeseníky PLA; forest slope spring area, clearings.
190. Šumperk env. (6068), Nový Malín, upper part of Malínská rokle valley, Jeseníky PLA; brook.
191. Šumperk env. (6068), Oskava, southern margin of Jeseníky PLA; forest, slope meadows, drain.
192. Šumperk env. (5968), Petrov nad Desnou; forest brook, settlement dump.
193. Šumperk env. (5967), Rejchartice, Červená hill (713 m a.s.l.); forest spring area.
194. Šumperk env. (5968), Skaliska near Rudoltice, Jeseníky PLA; forest brook.
195. Šumperk env. (5968), Sobotín, border of Jeseníky PLA; forest edge, small brook.
196. Šumperk env. (6068), Troustice hill (646 m a.s.l.) near Krásné settlement; forest clearings, drain.
197. Šumperk env. (6068), Třemešek, southern border of Jeseníky PLA; forest, slope spring area.
198. Šumperk env. (6068), Třemešek, Jestřábí potok brook, 618.1 m a.s.l., near Jestřáb Mt. (845.8 m a.s.l.), southern border of Jeseníky PLA; forest, shore vegetation.
199. Šumperk env. (6068), Václavov near Oskava; fields, forest clearings, swamps, flocculated iron.
200. Šumperk env. (6068), between Václavov and Mladoňov; forest brook, swamps.
201. Šumperk env. (6068), Václavovský potok brook near Oskava; shore vegetation.
202. Šumperk env. (5968), Velké Losiny, Losinka brook near Lískovec hill (675 m a.s.l.); marshes.
203. Šumperk env. (6068), Víkřovice, Desná river; shore vegetation.
204. Šumperk env. (6067), Zámeček between Šumperk and Bludov; forest drain and swamps.
205. Šumperk env. (6067), Zlatník viewpoint near Radomilov; slope meadow, small brook.
206. Vápenná env. (5768), Bučinský potok brook SW of Nýznerov near Kopřivník Mt. (924.8 m a.s.l.), Rychlebské hory Mts.; swamps.
207. Vápenná env. (5668), Kobylá, Vidnavka river; shore vegetation.
208. Vápenná env. (5668), between Nýznerov and Žulová, Stříbrný potok brook near Hadí vrch hill (476 m a.s.l.), Rychlebské hory Mts.; shore vegetation.
209. Vápenná env. (5668), Sedm Lánů near Žulová, Petrovický potok brook; shore vegetation.
210. Vápenná env. (5768), Srncí stráž slope near Nýznerov, sources of Bučinský potok brook, 724.2 m a.s.l., Rychlebské hory Mts.; spring area.
211. Vápenná env. (5768), Zadní Jílovec hill (571 m a.s.l.), Rychlebské hory Mts.; small forest brook, swamps.
212. Vápenná env. (5668), Žulová, Bažantnice near Velký rybník pond; forest swamps.
213. Vidnava env. (5668), Rokliny, small forest pond; littoral vegetation.

214. Vidnava env. (5669), Stachlovice; forest spring area.
 215. Vidnava env. (5669), Stará Červená Voda; small regulated brook in settlement.
 216. Vrbno pod Pradědem (5870), Jeseníky PLA; small forest brook.
 217. Vrbno pod Pradědem env. (5970), Andělská Hora, Jeseníky PLA; outflow of a spring.
 218. Vrbno pod Pradědem env. (5970), 2 km NW of Anenský vrch hill (861 m a.s.l.), Jeseníky PLA; spring.
 219. Vrbno pod Pradědem env. (5869), Bílý Potok, Jeseníky PLA; brook, meadows and fields with a small pond.
 220. Vrbno pod Pradědem env. (5870), Karlovice, Zámecký vrch hill (701 m a.s.l.), Jeseníky PLA; marshes.
 221. Vrbno pod Pradědem env. (5870), Mnichov (settlement), border of Jeseníky PLA; drain, debris.
 222. Vrbno pod Pradědem env. (5869-5870), Mnichov, Suchý potok brook near Suchý vrch hill (941 m a.s.l.), Jeseníky PLA; forest slope spring area, channel.
 223. Vrbno pod Pradědem env. (5869), Střední Opava river, 654.3 m a.s.l., near Bílý Potok, Zadní Plošina, Jeseníky PLA; swampy shores.
 224. Zlaté Hory env. (5769), Bílý kámen hill (612.6 m a.s.l.) near Široký Brod; small brook, forest clearing.
 225. Zlaté Hory env. (5669), Mikulovice, Lesní potok brook; shore vegetation.
 226. Zlaté Hory (5770), Skřivánkovský potok brook; pond and pools along footpath.

List of species

Sycorax silacea Curtis, 1839

Unpublished record. Karlova Studánka, garden of the Museum of Geology and Svatý Hubert chapel [84], ♂, 14.vi.1997.

European species, locally common.

Sycorax tonnoiri Jung, 1954

Published records. JEŽEK (2003): Branná [15], Chebží near Česká Ves [64] and Lipová Lázně [107].

Unpublished records. Karlova Studánka, garden of the Museum of Geology and Svatý Hubert chapel [84], ♂, 14.vi.1997; Lipová Lázně env., between Javořík hill and Miroslav [113], ♂, 22.vii.1998; Černá Opava river, 1 km SW of Opavský most bridge [154], ♂, 25.vi.2003.

European species, critically endangered; for more information on distribution see JEŽEK (2003).

Atrichobrunettia (Mirousiella) graeca Ježek & Goutner, 1993

Published record. JEŽEK (2003): Stachlovice near Vidnava [214].

European species with a few known localities, vulnerable, for more information see JEŽEK (2003).

Promormia eatoni (Tonnoir, 1940)

Unpublished record. Zlaté Hory, Skřivánkovský potok brook [226], ♂, 27.vi.1995.

European species, endangered.

Yomormia furva (Tonnoir, 1940)

Unpublished record. Branná, limestone quarry [14], 4 ♂♂, 19.vii.1999.

European species with a few known localities; also reported from Abkhazia. Conservation status not estimated. For more information on distribution see in JEŽEK (2006).

***Panimerus denticulatus* Krek, 1971**

Unpublished record. Vrbno pod Pradědem env., Bílý Potok [219], ♂, 13.vii.1996.

European species, common.

***Panimerus notabilis* (Eaton, 1893)**

Unpublished records. Václavov near Oskava [199], ♂, 2.viii.1995; Sedm Lánů near Žulová, Petrovický potok brook [209], ♂, 18.viii.1998.

European species, common; also reported from Iran.

***Parajungiella ellisi* (Withers, 1987)**

Published record. JEŽEK (2003): Rýmařov env., Horní Moravice [162].

European and West-Siberian species, rare, critically endangered.

***Parajungiella longicornis* (Tonnoir, 1919)**

Unpublished records. Hill 752 m a.s.l. near Podlesí [72], ♂, 12.vi.1994; Dolní Moravice, Moravice river [161], ♂, 15.vi.1994; Horní Moravice, Moravický potok brook [162], 2 ♂♂, 16.vi.1994; Stará Ves, Růžový potok brook [166], ♂, 8.vi.1994; Karlovice, Zámecký vrch hill [220], ♂, 29.vi.1995.

European and West-Siberian species, very common.

***Paramormia* (*Paramormia*) *polyascoidea* (Krek, 1971)**

Published record. JEŽEK (1990a): Bedřichov [178].

Unpublished records. Rýmařov [160], ♂, 11.vi.1994; Václavov near Oskava [199], ♂, 2.viii.1995.

European and West-Siberian species, also known from Transcaucasus, not rare.

***Peripsychoda auriculata* (Curtis, 1839)**

Unpublished records. Bělá pod Pradědem (NW) [1], ♂, 28.vi.1999; Komářův dolinka valley near Sedm Křížů [50], ♂, 13.vii.1996; Javorník, Pastvicka [52], ♂, 13.vii.1996; Pelnařův důl valley near Uhelná [53], ♂, 18.viii.1998; Javorník, Zaječí vrch hill [55], ♂, 13.vii.1996; Rejhotice [106], ♂, 21.vii.1994; Lipová Lázň, 1.5 km SE of railway station [107], 2 ♂♂, 13.vii.1994; between Vernířovice and Marškov, Zadní vrch hill [121], ♂, 29.vii.1995; Květná, Krupá brook [173], ♂, 15.vii.1996; Hraběšice [180], ♂, 23.vii.1994; between Hraběšice and Rudoltice [181], ♂, 23.vii.1994; Krásné [184], ♂, 23.vii.1994; Mladoňov, Na Samotě [188], ♂, 13.vii.1995; Zámeček between Šumperk and Bludov [204], ♂, 13.vii.1998; Žulová, Bažantnice near Velký rybník pond [212], ♂, 30.vii.1995; Vrbno pod Pradědem, Bílý Potok [219], 2 ♂♂, 13.vii.1996; Karlovice, Zámecký vrch hill [220], ♂, 29.vi.1995; Zlaté Hory, Skřivánkovský potok brook [226], ♂, 27.vi.1995.

European and Transcaucasian species, very common.

***Telmatoscopus carpathicus* Ježek, 1988**

Published record. JEŽEK (2003): Velká kotlina basin near Karlov pod Pradědem, Moravice stream [80].

Central-European species, very rare and vulnerable.

***Telmatoscopus carthusianus* (Vaillant, 1972)**

Unpublished record. Vrbno pod Pradědem [216], ♂, 26.vi.2003.

European species, locally common.

***Telmatoscopus gressicus* (Vaillant, 1972)**

Unpublished record. Kouty nad Desnou, Plchova soutěška ravine, Divoká Desná river [102], ♂, 13.vi.1995.
European species, locally common.

***Telmatoscopus labeculosus* (Eaton, 1893)**

Published record. JEŽEK (2003): Javorník env., Pastvicka, Červenka brook [52].
European species, endangered, for more information on distribution see JEŽEK (2003, 2006).

***Philosepedon austriacum* Vaillant, 1974**

Published record. JEŽEK (2003): between Nové Losiny and Přemyslov, viewpoint [24]; Jeseník – Bukovice, Bukovický vrch hill [62]; Květná, Krupá brook [173]; Střbrnice [176]; Vikýřovice, Desná river [203].
European and West-Siberian species, common.

***Philosepedon balkanicum* Krek, 1971**

Published records. JEŽEK (2003): Velká kotlina basin near Karlov pod Pradědem [81]; Lipová Lázně, Na Pomezí cave env. [114]; Třemešek [197].
Unpublished record. Lipová Lázně, Toč hill [115], ♂, 30.vii.1995.
European species, also reported from Abkhazia, critically endangered.

***Philosepedon hrudkai* Ježek, 1999**

Published record. JEŽEK (2003): Lesní Mlýn near Dolní Moravice [75].
Central European species, very rare, vulnerable.

***Philosepedon humerale* (Meigen, 1818)**

Unpublished records. Horní Domašov [10], ♂, 23.ix.1998; Branná, churchyard [13], ♂, 11.vii.1998; Kronfelzov (= Pastviny), Brusný potok brook [25], ♂, 11.vii.1998; Drakov near Mlýnský vrch hill, Černá Opava river [36], ♂, not dated; hill 806.6 m a.s.l., W of Heřmanovice [37], ♂, 16.ix.1994; Bukovice, Bukovický vrch hill [62], ♂, 21.ix.1998; Květná, Krupá brook [173], ♂, 15.vii.1996; Vikýřovice, Desná river [203], ♂, 20.vii.1995; Vrbno pod Pradědem [216], ♂, 26.vi.2003.
European species, very common.

***Threticus arvernicus* Vaillant, 1972**

Published record. JEŽEK (2003): Kouty nad Desnou, Smutný žleb gorge [104].
European species known from a few localities, vulnerable.

***Threticus incurvus* Krek, 1972**

Published record. JEŽEK (1996): Stará Ves, Růžový potok brook [166].
Unpublished record. Karlov pod Pradědem, Moravice river [79], ♂, 7.vi.1994.
European species, endangered; for more data on distribution see JEŽEK (1996, 2003).

***Threticus lucifugus* (Walker, 1856)**

Unpublished records. Domašov, between Borový potok brook and Bělá river [6], ♂, 24.ix.1998; Šléglov [28], ♂, 19.vii.1999; Filipovice, Filipovické louky meadows [45], ♂, 5.v.2000; Kouty nad Desnou, Smutný žleb gorge,

[104], ♂, 18.viii.1999; Černá Opava river, 1 km SW of Opavský most bridge [154], ♂, 25.vi.2003; Velké mechové jezírko peat bog, SW of Rejvíz [159], ♂, 14.ix.1994; Stará Ves (western part) [165], ♂, 8.vi.1994; Zlatník viewpoint near Radomilov [205], ♂, 13.vii.1998.

European species, see JEŽEK (1985) and WAGNER (1990) for more data on distribution.

Threticus silvaticus Ježek, 1985

Published record. JEŽEK (1996): Rejvíz env., hill 795.2 m a.s.l.[159].

Unpublished records. Domašov, between Borový potok brook and Bělá river [6], ♂, 24.ix.1998; Velká kotlina basin (lower part) [81], ♂, 14.-26.vi.1994, MT, Ištvaněh leg.; Kouty nad Desnou, Smutný žleb gorge [104], ♂, 18.viii.1999.

Central European species, vulnerable.

Trichopsychoda hirtella (Tonnoir, 1919)

Unpublished records. Domašovský kopec hill [9], ♂, 25.vi.1999; Elba (= Labe) near Nové Losiny [17], ♂, 18.vii.1998; Štéglov [28], ♀, 19.vii.1999; Nový hrad castle near Raškov [33], ♂, 26.vii.1995; Drátovna, Červenohorský potok brook [41], ♀, 23.ix.1998; Filipovice (settlement) [42], ♀, 23.vi.1999; Filipovice, W of Úsvit rehabilitation centre [44], ♂, 23.vi.1999; Filipovice, Filipovické louky meadows [45], ♂, 27.vi.1999; between Horní Fůt and Dolní Fůt, Červený potok brook [49], ♂, 18.viii.1998; Bukovice, Bukovický vrch hill [62], ♂, 21.ix.1998; Velká kotlina basin (lower part) [81], ♂, 1.viii.1994, Frouz leg.; Kouty nad Desnou, Divoká Desná river, 1 km E of railway station [99], ♂, 13.vi.1995; Kouty nad Desnou, Nový most bridge, Divoká Desná river [101], ♂, 13.vi.1995; Kouty nad Desnou, Smutný žleb gorge [104], ♀, 18.viii.1999; Horní Lipová, near railway station [109], ♀, 12.vii.1994; Javořícký potok brook near Javořík hill [111], ♂, 1.viii.1994; between Staré Město pod Sněžníkem and Hajmrliv [171], ♀, 17.vii.1999.

European species, common.

Chodopsycha lobata (Tonnoir, 1940)

Unpublished records. Bělá pod Pradědem, NE of Bršť hill [4], ♀, 28.vi.1999; Domašov, between Borový potok brook and Bělá river [6], ♂, 24.ix.1998; Branná river [15], ♀, 25.ix.2000; Drakov near Mlýnský vrch hill, Černá Opava river [36], ♀, not dated; Filipovice, Filipovické louky meadows [45], ♀, 23.ix.1998; Vlčice [54], ♀, 18.viii.1998; Jeseník, Zlatý Chlum [71], ♀, 25.vii.1994; Velká kotlina basin (lower part) [81], ♂, 18.ix.-1.x.1994, MT, Grim leg.; Kouty nad Desnou, Divoká Desná river, 1 km E of railway station [99], ♀, 25.vii.1995; Lipová Lázně, 1.5 km SE of railway station [107], ♂, 22.vii.1998; Lví hora Mt., Dlouhá dolina valley near Horní Lipová [108], ♀, 21.vii.1996; Javořícký potok brook near Javořík hill [111], ♀, 22.vii.1998; Lipová Lázně, between Javořík hill and Miroslav [113], ♀, 22.vii.1998; Na Pomezí cave env. [114], ♀, 30.vii.1995; Rejvíz, Chlapecké kameny Mt. [151], ♀, 14.ix.1994; Starý Rejvíz, Malé mechové jezírko peat bog [158], ♀, 25.vi.2003; S of Hadcová hill near Nový Rumburk [172], ♀, 15.vii.1996; Desná river between Maršíkov and Velké Losiny [187], ♀, 20.vii.1995; Třemešek [197], ♀, 13.vii.1995; Třemešek, Jestřábí potok brook near Jestřáb Mt. [198], ♀, 13.vii.1995; Velké Losiny, Losinka brook near Lískovec hill [202], ♀, 25.vii.1995; Vrbno pod Pradědem [216], ♂, 29.vi.1995; Mnichov, Suchý potok brook near Suchý vrch hill [222], ♀, 26.vi.2003; Střední Opava river near Bílý Potok, Zadní Plošina [223], ♂, 24.ix.2000.

European and Transcaucasian species, common.

Copropsychoda brevicornis (Tonnoir, 1940)

Unpublished records. Domašovský kopec hill [9], 2 ♂♂, 25.vi.1999; Drakov near Mlýnský vrch hill, Černá Opava river [36], ♀, 27.vi.1995; between Dolní Údolí and Horní Údolí, Olešnica brook [152], ♂, 28.vi.1995; Desná river between Maršíkov and Velké Losiny [187], ♂, 20.vii.1995.

Palaearctic species, for additional information on distribution see JEŽEK & YAĞCI (2005).

Logima albipennis (Zetterstedt, 1850)

Unpublished records. Domašovský kopec hill [9], ♀, 25.vi.1999; Branná, limestone quarry [14], ♀, 19.vii.1999; between Nové Losiny and Přemyslov, viewpoint [24], ♀, 21.vii.1994; Kronfelzov (= Pastviny), Brusný potok brook [25], 2 ♀♀, 19.vii.1999; Šléglov [28], ♀, 19.vii.1999; Hanušovice, Chmurná hill [31], ♀, 26.vii.1995; Kopřivná [32], ♀, 26.vii.1995; Nový hrad castle near Raškov [33], ♀, 26.vii.1995; Prameny between Kopřivná and Žárová [35], ♀, 26.vii.1995; Drakov near Mlýnský vrch hill, Černá Opava river [36], 2 ♀♀, 27.vi.1995 and 23.ix.2000; hill 806.6 m a.s.l., W of Heřmanovice [37], 2 ♀♀, 27.vi.1995 and 16.ix.1994; Jeseník, Bělá river [56], ♀, 13.vii.1994; Bukovice, Bukovický vrch hill [62], ♂, 21.ix.1998; Pekelník hill near Česká Ves [70], ♀, 16.vii.1995; Malá Morávka [76], ♀, 12.vi.1994; between Malá Morávka and Rudná pod Pradědem [77], ♀, 14.vi.1994; Karlov pod Pradědem, Moravice river [79], ♀, 7.vi.1994; Velká kotlina basin (lower part) [81], 4 ♀♀, 7.-14.vi.1994, 14.-26.vi.1994, MT, Ištvanéh leg. + ♀, 11.vi.1997 (sweeping); Velká kotlina basin (upper part) near Vysoká hole Mt. [82], ♀, 7.vi.1994; Kouty nad Desnou, Smutný žleb gorge [104], ♀, 18.viii.1999; Lipová Lázně, 1.5 km SE of railway station [107], ♀, 22.vii.1998; Lipová Lázně, Toč hill [115], ♀, 22.vii.1998; Na Pomezí cave env. [114], ♀, 30.vii.1995; Loučná nad Desnou, Sedmidvory, Kamenitý potok brook [118], ♀, 21.vii.1995; Vernířovice [120], 2 ♀♀, 21.vii.1995 and 24.ix.2000; Praděd Mt., near Barborka hostel [135], ♀, 24.ix.2000; Rýmařov [160], ♀, 11.vi.1994; Mladoňov, Na Samotě [188], ♀, 13.vii.1995; Nový Malín, Malánská rokle valley [190], ♀, 2.viii.1995; Třemešek, Jestřábí potok brook near Jestřáb Mt. [198], ♀, 13.vii.1995; Velké Losiny, Losinka brook near Lískovec hill [202], ♀, 25.vii.1995; Víkřovice, Desná river [203], ♀, 20.vii.1995; Kobylá, Vidnavka river [207], ♀, 30.vii.1995; Zlaté Hory, Skřivánkovský potok brook [226], ♀, 27.vi.1995.

Cosmopolitan species, very common.

Logima erminea (Eaton, 1893)

Unpublished records. Horní Domašov [10], ♀, 23.ix.1998; Bukovice, Bukovický vrch hill [62], ♀, 21.ix.1998; Bukovice, Mlýnský rybník pond [63], ♀, 21.ix.1998; Velké Losiny, Losinka brook near Lískovec hill [202], ♀, 25.vii.1995.

Palearctic species, common.

Logima satchelli (Quate, 1955)

Unpublished records. Bělá pod Pradědem (NW) [1], ♂ + ♀, 28.vi.1999; Bělá pod Pradědem, NE of Bršř hill [4], ♂ + ♀, 28.vi.1999; Domašovský kopec hill [9], 2 ♂♂, 25.vi.1999; Františkov hamlet, Hučava brook [19], ♀, 3.viii.1994; Kronfelzov (= Pastviny), Brusný potok brook [25], ♀, 19.vii.1999; Šléglov [28], ♀, 19.vii.1999; Kopřivná [32], ♂, 26.vii.1995; Nový hrad castle near Raškov [33], ♀, 26.vii.1995; Drakov near Mlýnský vrch hill, Černá Opava river [36], ♀, 23.ix.2000; hill 806.6 m a.s.l., W of Heřmanovice [37], ♂, 27.vi.1995; Slučí potok brook near Rovný vrch hill [38], ♀, 27.vi.1995; Sokolův potok brook near Quinburk castle [39], ♀, 28.vi.1995; Borový potok brook between Zaječí hora Mt. and Malé Bradlo Mt. [40], ♀, 24.ix.1998; Filipovice (settlement) [42], ♂, 23.vi.1999; Filipovice, W of Úsvit rehabilitation centre [44], ♂, 23.vi.1999; Filipovice, Filipovické louky meadows [45], ♂, 27.vi.1999; Pelnařův důl valley near Uhelná [53], ♀, 18.viii.1998; Jeseník, Bělá river [56], ♀, 13.vii.1994; between Malá Morávka and Rudná pod Pradědem [77], ♀, 14.vi.1994; Velká kotlina basin (lower part) [81], ♀, 14.-26.vi.1994, MT, Ištvanéh leg. + ♂, 11.vi.1997 (sweeping); Karlova Studánka, garden of the Museum of Geology and Svatý Hubert chapel [84], ♀, 10.vi.1994; Kouty nad Desnou, Divoká Desná river, 1 km E of railway station [99], ♀, 25.vii.1995; Přemyslov [103], ♀, 25.vii.1995; Rejhotice [106], ♀, 21.vii.1994; Lipová Lázně, 1.5 km SE of railway station [107], ♀, 22.vii.1998; Loučná nad Desnou, Jelení skok Mt. [117], ♀, 25.vii.1995; Loučná nad Desnou, Tříramenný potok brook [119], ♀, 21.vii.1995; Tupý vrch Mt. [133], ♀, 14.vi.1995; Praděd Mt., near Barborka hostel [135], ♀, 12.vi.1997; between Dolní Údolí and Horní Údolí, Olešnice brook [152], ♀, 28.vi.1995; Rýmařov [160], ♀, 11.vi.1994; Dolní Moravice, Moravice river [161], ♀, 15.vi.1994; Stará Ves (western part) [165], ♀, 8.vi.1994; Staré Město pod Sněžníkem (town), Krupá river [170], ♀, 15.vii.1996; Květná, Krupá brook [173], ♀, 15.vii.1996; Nový Rumburk, Stříbrník brook [175], ♂, 15.vii.1996; Stříbrnice [176], ♀, 15.vii.1996; Libina [186], ♀, 2.viii.1995; Desná river between Maršíkov and Velké Losiny [187], ♀, 20.vii.1995; Mladoňov, Na Samotě [188], ♀, 13.vii.1995; Třemešek [197], ♀, 13.vii.1995; Třemešek, Jestřábí potok brook near

Jestřáb Mt. [198], ♀, 13.vii.1995; Vikýřovice, Desná river [203], ♂, 20.vii.1995; Kobylá, Vidnavka river [207], ♀, 30.vii.1995; Vrbno pod Pradědem [216], ♂, 29.vi.1995; Vrbno pod Pradědem, 2 km NW of Anenský vrch hill [218], ♀, 12.vi.1994; Mnichov (settlement) [221], ♂, 29.vi.1995; Bílý kámen hill near Široký Brod [224], ♂, 16.vii.1995; Zlaté Hory, Skřivánkovský potok brook [226], ♂, 27.vi.1995.

Holarctic species, common.

Logima zetterstedti Ježek, 1983

Unpublished records. Bělá pod Pradědem (NW) [1], 2 ♂♂, 28.vi.1999 and 24.ix.1998; Domašovský kopec hill [9], ♀, 25.vi.1999; Branná, limestone quarry [14], ♀, 19.vii.1999; Kronfelzov (= Pastviny), Brusný potok brook [25], ♀, 19.vii.1999; Šléglov [28], ♀ + ♂, 19.vii.1999; between Šléglov and Vikantice [29], ♀, 19.vii.1999; Filipovice (settlement) [42], ♀, 23.vi.1999; Filipovice, W of Úsvit rehabilitation centre [44], ♀, 23.vi.1999; Filipovice, Filipovické louky meadows [45], ♀, 27.vi.1999; Jeseník, Bělá river [56], ♂, 13.vii.1994; Malá Morávka [76], ♀, not dated; Železný vrch hill near Malá Morávka [83], ♀, 6.vi.1994; Karlova Studánka, garden of the Museum of Geology and Svatý Hubert chapel [84], ♀, 10.vi.1994; Kouty nad Desnou, Divoká Desná river, 1 km E of railway station [99], ♀, 18.viii.1999; Lipová Lázně env., 1.5 km SE of railway station [107], ♂, 22.vii.1998; Loučná nad Desnou, Sedmidvory, Kamenitý potok brook [118], ♀, 21.vii.1995; between Vernířovice and Maršíkov, Zadní vrch hill [121], ♀, 29.vii.1995; waterfalls of Bílá Opava river between Ověčárna hostel and Karlova Studánka [142], ♀, 14.vi.1997; Dolní Moravice, Moravice river [161], ♀, 15.vi.1994; Stará Ves (western part) [165], ♀, 8.vi.1994; Velké Vrbno near Ostružná, Vrbenský potok brook [177], ♀, 27.vii.1996; Vrbno pod Pradědem [216], ♂, 29.vi.1995; Vrbno pod Pradědem, 2 km NW of Anenský vrch hill [218], ♂, 12.vi.1994; Zlaté Hory, Skřivánkovský potok brook [226], ♀, 27.vi.1995.

Palaeartic species, very common; for additional information on distribution see JEŽEK & YAĞCI (2005).

Psycha griseescens (Tonnoir, 1922)

Published record. JEŽEK (1990b): Břidličná Mt. [136].

Unpublished records. Domašovský kopec hill [9], ♂ + ♀, 25.vi.1999; Kronfelzov (= Pastviny), Brusný potok brook [25], ♂, 11.vii.1994; Zaječčí hora Mt. [48], ♂, 24.ix.1998; Velká kotlina basin (lower part) [81], 3 ♂♂ + 3 ♀♀, 7.-14.vi., 14.-26.vi., 26.vii.-5.viii., 18.ix.-1.x.1994, MT, Grim, Ištvaněh and Ježek leg.; NE of Keprník hunting lodge [92], ♀, 24.vi.1999; brook bed, 958.3 m a.s.l., near Trojmezí Mt. [93], ♂, 24.vi.1999; Loučná nad Desnou, Třiramenný potok brook [119], ♀, 21.vii.1995; between Ostruha Mt. and Jelení loučky Mt. [128], ♂, 22.ix.1998; Praděd Mt., near Barborka hostel [135], ♀, 12.vi.1997; Střední Opava river near Sokol Mt. [143], ♂, 9.vi.1994; Střední Opava river near Bílý Potok, Zadní Plošina [223], ♀, 24.ix.2000.

Palaeartic species, common, for up-to-date information on distribution see JEŽEK (2004a) and JEŽEK & YAĞCI (2005).

Psychoda phalaenoides (Linné, 1758)

Published record. JEŽEK (1990b): Bedřichov [178].

Unpublished records. Bělá pod Pradědem (NW) [1], 2 ♂♂ + ♀, 28.vi.1999 and 24.ix.1998; Bělá pod Pradědem, Bělá river [2], 2 ♀♀, 5.v. and 23.ix.2000; Bělá pod Pradědem, Borový potok brook [3], ♀, 24.ix.1998; Bělá pod Pradědem, NE of Bršť hill [4], ♂, 28.vi.1999; Domašov, Keprnický potok brook, Výrovka hovel [7], ♀, 28.vi.1999; Domašovský kopec hill [9], 2 ♂♂, 25.vi.1999; Šumný Mt. [12], ♀, 24.vi.1999; Branná, limestone quarry [14], ♂, 19.vii.1999; Branná, river [15], ♀, 25.ix.2000; Nové Losiny [23], ♂, 21.vii.1994; between Nové Losiny and Přemyslov, viewpoint [24], ♂, 21.vii.1994; Kronfelzov (= Pastviny), Brusný potok brook [25], 2 ♂♂ + ♀, 11.vii.1994 and 19.vii.1999; Šléglov [28], ♂, 19.vii.1999; between Šléglov and Vikantice [29], ♂, 19.vii.1999; Hanušovice, Chmurná hill [31], ♀, 26.vii.1995; Prameny between Kopřivná and Žárová [35], ♀, 26.vii.1995; Drakov near Mlýnský vrch hill, Černá Opava river [36], ♂ + ♀, 27.vi.1995 and 23.ix.2000; hill 806.6 m a.s.l., W of Heřmanovice [37], ♂, 27.vi.1995; Borový potok brook between Zaječčí hora Mt. and Malé Bradlo Mt. [40], ♀, 24.ix.1998;

Filipovice (settlement) [42], ♀, 23.vi.1999; Filipovice, Černý potok brook [43], ♂, 23.vi.1999; Filipovice, W of Úsvit rehabilitation centre [44], ♂, 27.vi.1999; Filipovice, Filipovické louky meadows [45], 2 ♂♂ + ♀, 23.vi. and 27.vi.1999 and 23.ix.1998; Filipovice (NW), hill 874.4 m a.s.l. [46], ♂, 27.vi.1999; Vlčice [54], ♀, 18.viii.1998; Lesní Mlýn near Dolní Moravice [75], ♀, 23.ix.2000; Malá Morávka [76], ♀, 7.vi.1994; Moravice river, 1-3 km SE of Velká kotlina basin [80], ♀, 7.vi.1994; Velká kotlina basin (lower part) [81], ♂ + ♀, 14.-26.vi. and 18.ix.-1.x.1994, MT, Grim and Ištvanéh leg.; Karlova Studánka, Hvězda hotel [85], ♀, 10.vi.1994; Přemyslov [103], ♀, 21.vii.1994; Horní Lipová, near railway station [109], 3 ♀♀, 12.-13.vii.1994 and 22.vii.1998; Horní Lipová, Sněhulák Mt. [110], ♀, 12.vii.1994; Javořícký potok brook near Javořík hill [111], ♂, 22.vii.1998; Lipová Lázně, between Javořík hill and Miroslav [113], ♂, 22.vii.1998; Lipová Lázně, Toč hill [115], ♂, 22.vii.1998; Loučná nad Desnou, Desná river near railway station [116], ♀, 21.vii.1995; Loučná nad Desnou, Jelení skok Mt. [117], ♂, not dated; Loučná nad Desnou, Sedmidvory, Kamenitý potok brook [118], ♂, 21.vii.1995; Loučná nad Desnou, Třiramenný potok brook [119], ♀, 21.vii.1995; Vernřovice [120], ♀, 24.ix.2000; between Vernřovice and Maršíkov, Zadní vrch hill [121], ♀, 29.vii.1995; Šumný potok brook between Velké Bradlo Mt. and Ostruha Mt. [130], ♀, 22.ix.1998; waterfalls of Bílá Opava river between Ověčárna hostel and Karlova Studánka [142], ♀, 12.vi.1997; Rejvíz (settlement) [149], ♀, 15.ix.1994; between Dolní Údolí and Horní Údolí, Olešnica brook [152], ♂ + ♀, 28.vi.1995 and 15.ix.1994; Rýmařov [160], ♂, 11.vi.1994; Dolní Moravice, Moravice river [161], 2 ♀♀, 15.vi.1994; Horní Moravice, Moravický potok brook [162], 2 ♀♀, 16.vi.1994; Jamartice, Podolský potok brook [163], ♂, 11.vi.1994; Stará Ves (western part) [165], ♂, 8.vi.1994; S of Hadcová hill near Nový Rumburk [172], ♀, 15.vii.1996; Květná, Krupá brook [173], ♀, 15.vii.1996; Stříbrnice [176], ♂, 15.vii.1996; Hraběšice [180], ♀, 23.vii.1994; Desná river between Maršíkov and Velké Losiny [187], ♀, 20.vii.1995; Mladoňov, Na Samotě [188], ♀, 13.vii.1995; Nový Malín [189], ♂, 13.vii.1995; Třemešek [197], ♀, 13.vii.1995; Jestřebí potok brook near Jestřáb Mt. [198], ♀, 13.vii.1995; Velké Losiny, Losinka brook near Lískovec Mt. [202], ♂, 25.vii.1995; Kobylá, Vidnavka river [207], ♀, 30.vii.1995; between Nýznerov and Žulová, Stříbrný potok brook near Hadí vrch hill [208], ♂, 21.vii.1996; Vápenná, Zadní Jílovec hill [211], ♂, 30.vii.1995; Vrbno pod Pradědem [216], ♀, 29.vi.1995; Mnichov (settlement) [221], ♂, 29.vi.1995; Bílý kámen hill near Široký Brod [224], ♀, 16.vii.1995.

Holarctic species, common.

Psychoda uniformata Haseman, 1907

Unpublished records. Domašovský kopec hill [9], ♀, 25.vi.1999; Loučná nad Desnou, Desná river near railway station [116], ♀, 21.vii.1995; Bílý kámen hill near Široký Brod [224], ♀, 16.vii.1995.

Holarctic species, not rare.

Psychodocha cinerea (Banks, 1894)

Unpublished records. Bělá pod Pradědem, Bělá river [2], ♀, 5.v.2000; between Šléglov and Vikantice [29], ♂, 19.vii.1999; Filipovice, Černý potok brook [43], ♂, 23.vi.1999; Lázně Jeseník [69], ♀, ix.1985; Ježková leg.; Velká kotlina basin (lower part) [81], ♂, 14.-26.vi.1994, MT, Ištvanéh leg.; Kouty nad Desnou, Dlouhé Stráně hotel env. [98], ♂, 4.v.2000; Lipová Lázně, 1.5 km SE of railway station [107], 2 ♂♂, 13.vii.1994 and 22.vii.1998; Květná, Krupá brook [173], ♂, 15.vii.1996.

Cosmopolitan species, very common.

Psychodocha gemina (Eaton, 1904)

Published record. JEŽEK (1990b): Branná [15].

Unpublished records. Bělá pod Pradědem (NW) [1], 2 ♀♀, 28.vi.1999; Bělá pod Pradědem, Borový potok brook [3], ♂, 24.ix.1998; Domašov, between Borový potok brook and Bělá river [6], ♀, 24.ix.1998; Domašovský kopec hill [9], 2 ♂♂, 25.vi.1999; Branná, limestone quarry [14], ♀, 19.vii.1999; Františkov hamlet, Hučava brook [19], ♂, 3.viii.1994; Kronfelzov (= Pastviny), Brusný potok brook [25], ♀, 19.vii.1999; Šléglov [28], ♀, 19.vii.1999; between Šléglov and Vikantice [29], ♀, 19.vii.1999; Nový hrad castle near Raškov [33], ♀, 26.vii.1995; Filipovice, Filipovické louky meadows [45], ♂, 23.ix.1998; Sněžná kotlina basin near Červená hora Mt., Černý potok

brook [47], ♀, 5.v.2000; 1 km NE of Bílé skály Mt. [60], ♀, 25.vii.1994; Bukovice, Bukovický vrch hill [62], ♂, 21.ix.1998; Stará cesta footpath between Dětřichov and Rejvíz [66], ♀, 6.v.2000; Karlov pod Pradědem, Moravice river [79], ♀, 6.vi.1994; Moravice river, 1-3 km SE of Velká kotlina basin [80], ♀, 7.vi.1994; Velká kotlina basin (lower part) [81], 3 ♀♀, 7.-14.vi. and 14.-26.vi.1994, MT, Ištvanéh and Ježek leg.; same, sweeping, ♀, 11.vi.1997; Velká kotlina basin (upper part) near Vysoká hole Mt. [82], ♀, 4.viii.1994, Frouz leg.; Kouty nad Desnou, Dlouhé Stráně hotel env. [98], ♂, 4.v.2000; Kouty nad Desnou, Divoká Desná river, 1 km E of railway station [99], 2 ♀♀, 13.vi. and 25.vii.1995; Hučivá Desná river near Šindelová hora Mt. [105], ♂, 18.viii.1999; Lipová Lázně, 1.5 km SE of railway station [107], ♂ + ♀, 13.vii.1994 and 22.vii.1998; Lipová Lázně, between Javořík hill and Miroslav [113], ♀, 22.vii.1998; Lipová Lázně, Toč hill [115], ♂, 22.vii.1998; Loučná nad Desnou env., Jelení skok Mt. [117], ♀, 25.vii.1995; Loučná nad Desnou, Sedmidvory, Kamenitý potok brook [118], ♀, 21.vii.1995; Vernřovice [120], ♀, 21.vii.1995; Loučná nad Desnou, Vlčí sedlo saddleback near Kluč Mt. and Sedmidvory [122], ♀, 21.vii.1995; between Ostruha Mt. and Jelení loučky Mt. [128], ♂, 22.ix.1998; Šumný potok brook between Velké Bradlo Mt. and Ostruha Mt. [130], ♂, 22.ix.1998; between Dolní Údolí and Horní Údolí, Olešnica brook [152], 2 ♀♀, 28.vi.1995 and 15.ix.1994; Sporný hill near Chebíz [157], ♀, 16.vii.1995; Dolní Moravice, Moravice river [161], ♀, 15.vi.1994; S of Hadcová hill near Nový Rumburk [172], ♀, 15.vii.1996; Hrabíšín [182], ♀, 2.viii.1995; Rejchartice, Červená hill [193], ♀, 26.vii.1995; Václavovský potok brook near Oskava [201], ♀, 2.viii.1995; Kobylá, Vidnavka river [207], ♀, 30.vii.1995; Vrbno pod Pradědem [216], ♀, 29.vi.1995; Zlaté Hory, Skřivánkovský potok brook [226], ♂, 27.vi.1995.

European species, common.

Psychodocha itoco (Tokunaga & Komyo, 1955)

Published record. JEZEK (2003): Velká kotlina basin near Karlov pod Pradědem [81].

Probably a Palaearctic species (recorded from Japan and Central Europe), so far overlooked. Conservation status not estimated.

Psychodula minuta (Banks, 1894)

Unpublished records. Velká kotlina basin (lower part) [81], 2 ♂♂, 14.-26.vi.1994, MT, Ištvanéh leg.; between Vernřovice and Maršíkov, Zadní vrch hill [121], ♀, 29.vii.1995.

Holarctic species, common.

Psychomora trinodulosa (Tonnoir, 1922)

Unpublished records. Bělá pod Pradědem (NW) [1], 2 ♂♂ + ♀, 28.vi.1999, 19.vii.1999 and 24.ix.1998; Domašovský kopec hill [9], ♂ + ♀, 25.vi.1999; Branná, limestone quarry [14], ♀, 19.vii.1999; Kronfelzov (= Pastviny), Brusný potok brook [25], ♀, 19.vii.1999; Šléglov [28], ♀, 19.vii.1999; between Šléglov and Vikantice [29], ♀, 19.vii.1999; Jeseník, Bělá river [56], ♀, 13.vii.1994; Velká kotlina basin (lower part) [81], ♂, 14.-26.vi.1994, MT, Ištvanéh leg.; Lipová Lázně, 1.5 km SE of railway station [107], ♀, 22.vii.1998; Rýmařov [160], ♀, 11.vi.1994; between Staré Město pod Sněžníkem and Hajmrlův [171], ♂, 17.vii.1999; Desná river between Maršíkov and Velké Losiny [187], ♂, 20.vii.1995; Velké Losiny, Losinka brook near Lískovec hill [202], ♂, 25.vii.1995; Kobylá, Vidnavka river [207], ♂, 30.vii.1995.

Holarctic species, common.

Tinearia alternata (Say, 1824)

Unpublished records. Bělá pod Pradědem, Borový potok brook [3], ♀, 24.ix.1998; Domašovský kopec hill [9], ♂, 25.vi.1999; Horní Domašov [10], ♀, 23.ix.1998; Branná, limestone quarry [14], ♀, 19.vii.1999; Šléglov [28], ♂, 19.vii.1999; Bukovice, Bukovický vrch hill [62], ♀, 21.ix.1998; Lázně Jeseník [69], ♀, ix.1985, Ježková leg.

Cosmopolitan species, common.

***Tinearia lativentris* (Berdén, 1952)**

Unpublished records. Žulová, Bažantnice near Velký rybník pond [212], ♀, 30.vii.1995; Vidnava, Rokliny [213], ♂, 18.viii.1996.

Holarctic species, common; for additional information on distribution see JEŽEK & YAĞCI (2005).

***Ypsidocha setigera* (Tonnoir, 1922)**

Published records. JEŽEK (2003): Bělá pod Pradědem, Domašovský kopec hill [9]; Branná [15]; between Šléglov and Vikantice [29]; Filipovické louky meadows near Horní Domašov [45].

Unpublished records. Hill 806.6 m a.s.l., W of Heřmanovice [37], ♂, 27.vi.1995; Velká kotlina basin (lower part) [81], ♀, 14.-26.vi.1994, MT, Ištvanéh leg.

Cosmopolitan species according to WAGNER (1990), not rare.

***Berdeniella chvojkaei* Ježek, 1999**

Published records. JEŽEK (2003): Dolní Moravice (Mlýnský potok brook) [78]; Karlov pod Pradědem, Moravice river [79].

Unpublished records. Malá Morávka [76], ♂, 6.vi.1994; Kyselka near Suchá Rudná [88], ♂, 12.vi.1994; Divoká Desná river near Tupý vrch Mt. [131], 2 ♂♂, 13.vi.1995; Rýmařov [160], ♂, 11.vi.1994; Dolní Moravice, Moravice river [161], ♂, 15.vi.1994.

Central-European species, rare, vulnerable.

***Berdeniella desnensis* sp. nov.**

Central-European species (?). Conservation status not estimated. For the list of localities see the taxonomic part.

***Berdeniella kocii* sp. nov.**

Central-European species (?). Conservation status not estimated. For the list of localities see the taxonomic part.

***Berdeniella longispinosa* (Vaillant, 1958)**

Unpublished records. Karlov pod Pradědem, Moravice river [79], ♂, 7.vi.1994; Divoká Desná river near Tupý vrch Mt. [131], ♂, 13.vi.1995; Cat. No. 34372 and 34373, Inv. No. 14878 and 14879.

European species, rare. So far known only from Spain, Austria and the former Yugoslavia (WAGNER 1990). New to the fauna of the Czech Republic. Conservation status not estimated.

***Berdeniella manicata* (Tonnoir, 1920)**

Published records. JEŽEK (1996): between Branná and Ostružná [16]; Dolní Moravice [161].

Unpublished records. Bělá pod Pradědem, Bělá river [2], ♂, 5.v.2000; Branná, river [15], ♂, 6.v.2000; between Horní Fořt and Dolní Fořt, Červený potok brook [49], ♂, 18.viii.1998; Pelnařův důl valley near Uhebná [53], ♂, 18.viii.1998; Vlčice [54], ♂, 18.viii.1998; Čertovy kameny viewpoint near Česká Ves [65], ♂, 25.vii.1994; Dolní Moravice, Moravice river [161], ♂, 5.v.2000; Václavovský potok brook near Oskava [201], ♂, 2.viii.1995; Kobylá, Vidnava river [207], ♂, 30.vii.1995; Sedm Lánů near Žulová, Petrovický potok brook [209], ♂, 18.viii.1998.

European species, locally common.

***Berdeniella matthesi* (Jung, 1954)**

Published records. JEŽEK (2003): Velká kotlina basin near Vysoká hole Mt., Moravice stream [82]; Jelení studánka spring near Břidličná hora Mt. [136]; Kamzičí vrch hill, sources of Střední Opava [140]; Praděd NNR, Bílá Opava stream [142]; Sokol Mt., Střední Opava stream [143]; Stříbrnice [176]; Návrší near Stříbrnice [176].

Unpublished records. Jelení bučina beech wood near Vidly [86], ♂, 25.v.1999, Lauterer leg.; Rejvíz, settlement [149], ♂, 1.vi.1972, Martinovský leg.

European species, locally common.

***Berdeniella pyrenaica* Vaillant, 1976**

Unpublished record. Dolní Moravice, Moravice river [161], ♂, 15.vi.1994, Cat. No. 34374, Inv. No. 14870.

European species, rare, so far known only from France and Spain. New to the fauna of the Czech Republic. Conservation status not estimated.

***Berdeniella stavniensis* (Krek, 1969)**

Published records. JEŽEK (2003): Branná env., Přední Alojzov [26]; Javorník env., Vlčice [54]; Karlov pod Pradědem, Moravice river [79]; Suchá Rudná env., Kyselka [88]; Skřítek NNR, Žlutý potok brook [97]; Rýmařov env., Stará Ves [165].

Unpublished record. Slučí potok brook near Rovný vrch hill [38], ♂, 28.vi.1995.

European species, locally common.

***Berdeniella unispinosa* (Tonnoir, 1919)**

Unpublished records. Bělá pod Pradědem (NW) [1], 2 ♂♂, 28.vi.1999; Branná, limestone quarry [14], ♂, 19.vii.1999; Elba (= Labe) near Nové Losiny [17], ♂, 11.vii.1994; Františkov, Pod slunečnou strání, Hučava brook [18], ♂, 3.viii.1994; Františkov hamlet, Hučava brook [19], ♂, 3.viii.1994; Nové Losiny [23], ♂, 21.vii.1994; between Nové Losiny and Přemyslov, viewpoint [24], ♂, 21.vii.1994; Kronfelzov (= Pastviny), Brusný potok brook [25], 4 ♂♂, 11.-12.vii.1994, 11.vii.1998, 19.vii.1999; Sklenský vrch hill near Nové Losiny [27], ♂, 18.vii.1998; Zadní Alojzov [30], ♂, 16.vii.1994; Drakov near Mlýnský vrch hill, Černá Opava river [36], ♂, 27.vi.1995; Slučí potok brook near Rovný vrch hill [38], ♂, 28.vi.1995; Sokolí potok brook near Quinburk castle [39], ♂, 28.vi.1995; Filipovice (settlement) [42], ♂, 23.vi.1999; Filipovice, Černý potok brook [43], ♂, 23.vi.1999; Adolfovice, shooting range, Šumný potok brook [58], ♂, 1.viii.1994; Adolfovice, Javořícký potok brook, V Mlýnkách [59], ♂, 1.viii.1994; between Malá Morávka and Rudná pod Pradědem [77], ♂, 14.vi.1994; Velká kotlina basin (lower part) [81], ♂, 26.vii.-5.viii.1994, MT, Ištvanéh leg.; Lipová Lázně, 1.5 km SE of railway station [107], ♂, 13.vii.1994; Lví hora Mt., Dlouhá dolina valley near Horní Lipová [108], ♂, 21.vii.1996; Horní Lipová, near railway station [109], ♂, 13.vii.1994; Javořícký potok brook near Javořík hill [111], 2 ♂♂, 1.viii.1994 and 22.vii.1998; Javořícký potok brook between Javořík hill and Bezný hill [112], ♂, 22.vii.1998; Na Pomezí cave env. [114], ♂, 30.vii.1995; Lipová Lázně, Toč hill [115], ♂, 22.vii.1998; Loučná nad Desnou, Desná river near railway station [116], ♂, 21.vii.1995; Loučná nad Desnou, Jelení skok Mt. [117], ♂, 25.vii.1995; Loučná nad Desnou, Sedmidvory, Kamenitý potok brook [118], ♂, 21.vii.1995; Vernířovice [120], ♂, 21.vii.1995; Loučná nad Desnou, Vlčí sedlo saddleback near Kluč hill and Sedmidvory [122], ♂, 21.vii.1995; Šumný potok brook between Velké Bradlo Mt. and Ostruha Mt. [130], ♂, 24.vi.2003; Černý potok brook near Brousek Mt. and Smrk Mt. [147], 2 ♂♂, 27.vii.1996; Ramzovské sedlo saddleback [148], ♂, 27.vii.1994; between Dolní Údolí and Horní Údolí, Olešnice brook [152], ♂, 28.vi.1995; Opavská chata hunting lodge near Kazatelny Mt., Černá Opava river [153], ♂, 28.vi.1995; Podzámecký potok brook near Koberštejn castle ruin (Zámecký vrch hill) [156], ♂, 28.vi.1995; Horní Moravice, Moravický potok brook [162], 2 ♂♂, 16.vi.1994; Nový Rumburk, Stříbrník brook [175], ♂, 15.vii.1996; Velké Vrbno near Ostružná, Vrbenský potok brook [177], ♂, 27.vii.1996; Mladoňov, Na Samotě [188], ♂, 13.vii.1995; Nový Malín, Malínská rokle valley [190], ♂, 2.viii.1995; Třemešek [197], ♂, 13.vii.1995; Třemešek, Jestřábí potok brook near Jestřáb Mt. [198], ♂, 13.vii.1995; between Nýznerov and Žulová, Stříbrný potok brook near Haří

vrch hill [208], ♂, 21.vii.1996; Vápenná, Zadní Jílovec, 571 m a.s.l. [211], ♂, 30.vii.1995; Mnichov, Suchý potok brook near Suchý vrch hill [222], ♂, 29.vi.1995.

European species, common.

Berdeniella vimmeri Ježek, 1995

Published records. JEŽEK (1996): Přední Alojzov [26] and Střední Opava river near Sokol Mt. [143].

Unpublished records. Between Horní Fořt and Dolní Fořt, Červený potok brook [49], ♂, 18.viii.1998; Vlčice [54], ♂, 18.viii.1998; Karlov pod Pradědem, Moravice river [79], 2 ♂♂, 7.vi.1994 and 11.vi.1997; Václavovský potok brook near Oskava [201], ♂, 2.viii.1995.

Central-European species, locally common.

Clytocerus (Boreoclytocerus) dalii (Eaton, 1893)

Published records. JEŽEK (2003): Rejvíz (settlement) [149] and Stříbrnice [176].

European species, rather rare.

Clytocerus (Boreoclytocerus) ocellaris (Meigen, 1804)

Unpublished records. Horní Domašov [10], ♂, 23.ix.1998; Elba (= Labe) near Nové Losiny [17], ♂, 18.vii.1998; Františkov hamlet, Hučava brook [19], ♂, 21.vii.1994; Josefová [22], ♂, 3.viii.1994; between Nové Losiny and Přemyslov, viewpoint [24], ♂, 21.vii.1994; Kronfelzov (= Pastviny), Brusný potok brook [25], 2 ♂♂, 19.vii.1999; Sklenský vrch hill near Nové Losiny [27], ♂, 18.vii.1998; Šléglov [28], ♂, 19.vii.1999; between Šléglov and Vikantice [29], ♂, 19.vii.1999; Osikov near Kopřivná, Ořešník hill [34], ♂, 15.vii.1998; Filipovice, Filipovické louky meadows [45], ♂, 5.v.2000; Pelnařův důl valley near Uhelná [53], ♂, 18.viii.1998; Adolfovice, shooting range, Šumný potok brook [58], ♂, 1.viii.1994; Bukovice, Bukovický vrch hill [62], ♂, 21.ix.1998; Bukovice, Mlýnský rybník pond [63], ♂, 21.ix.1998; hill 752 m a.s.l. near Podlesí [72], ♂, 12.vi.1994; Lesní Mlýn near Dolní Moravice [75], ♂, 23.ix.2000; Malá Morávka [76], 2 ♂♂, 6.-7.vi.1994; Karlov pod Pradědem, Moravice river [79], ♂, 7.vi.1994; Moravice river, 1-3 km SE of Velká kotlina basin [80], ♂, 7.vi.1994; Velká kotlina basin (lower part) [81], 2 ♂♂, 11.vi.1997; Žlutý potok brook near Skřítek NNR [97], ♂, 13.vi.1994; Kouty nad Desnou, Dlouhé Stráně hotel env. [98], ♂, 18.viii.1999; Kouty nad Desnou, Annín, Hučivá Desná river [100], ♂, 18.viii.1999; Kouty nad Desnou, Smutný žleb gorge [104], ♂, 18.viii.1999; Rejhotice [106], ♂, 21.vii.1994; Lipová Lázně, 1.5 km SE of railway station [107], ♂, 13.vii.1994; Javořícký potok brook near Javořík hill [111], ♂, 1.viii.1994; Javořícký potok brook between Javořík hill and Bezný hill [112], ♂, 22.vii.1998; Lipová Lázně, Toč hill [115], ♂, 22.vii.1998; Loučná nad Desnou, Jelení skok Mt. [117], 2 ♂♂, 25.vii.1995; Loučná nad Desnou, Sedmidvory, Kamenitý potok brook [118], ♂, 21.vii.1995; between Vernífovice and Maršův, Zadní vrch hill [121], ♂, 29.vii.1995; Rejvíz, settlement [149], ♂, 6.v.2000; between Dolní Údolí and Horní Údolí, Olešnice brook [152], ♂, 15.ix.1994; Dolní Moravice, Moravice river [161], ♂, 15.vi.1994; Květná, Krupá brook [173], ♂, 17.vii.1999; Malé Vrbno, Telčava brook near Moravia hotel [174], ♂, 11.vii.1998; between Hraběšice and Rudoltice [181], ♂, 23.vii.1994; Hraběšín [182], ♂, 2.viii.1995; Krásné [184], ♂, 23.vii.1994; Krásné water reservoir [185], ♂, 23.vii.1994; Nový Malín [189], ♂, 13.vii.1995; Nový Malín, Malínská rokle valley [190], ♂, 2.viii.1995; Oskava [191], ♂, 13.vii.1995; Petrov nad Desnou [192], ♂, 20.vii.1995; Rejchartice, Červená hill [193], ♂, 26.vii.1995; Sobotín [195], ♂, 20.vii.1995; Václavov near Oskava [199], ♂, 2.viii.1995; between Václavov and Mladoňov [200], ♂, 2.viii.1995; Václavovský potok brook near Oskava [201], ♂, 2.viii.1995; Velké Losiny, Losinka brook near Lískovec hill [202], ♂, 25.vii.1995; Víkřovice, Desná river [203], ♂, 20.vii.1995; Zlatník viewpoint near Radomilov [205], ♂, 13.vii.1998; Vápenná, Zadní Jílovec hill [211], ♂, 30.vii.1995; Žulová, Bažantnice near Velký rybník pond [212], ♂, 30.vii.1995; Vidnava, Rokliny [213], ♂, 18.viii.1996; Stachlovce [214], ♂, 18.viii.1996; Vrbno pod Pradědem, Bílý Potok [219], ♂, 13.vii.1996; Karlovice, Zámecký vrch hill [220], ♂, 29.vi.1995.

European species, very common.

Clytocerus (Boreoclytocerus) rivosus (Tonnoir, 1919)

Unpublished record. Between Vernřovice and Marřikov, Zadnř vrch hill [121], ♂, 29.vii.1995.

European species, critically endangered, not common.

Parabazarella subneglecta (Tonnoir, 1922)

Unpublished records. Jesenřk, Řecký pramen spring [57], ♂, 25.vii.1994; Dolnř Moravice, Moravice river [161], ♂, 5.v.2000; Hostice, Hostický potok brook [179], ♂, 13.vii.1998; Vřclavovský potok brook near Oskava [201], ♂, 2.viii.1995.

Eurasian species, not common.

Pericoma (Pachypericoma) blandula Eaton, 1893

Unpublished records. Pelnařův dřl valley near Uhelnř [53], ♂, 18.viii.1998; Na Pomezř cave env. [114], ♂, 30.vii.1995; Krřsně water reservoir [185], ♂, 23.vii.1994; between Nřznerov and Źulovř, Střbrnř potok brook near Hadř vrch hill [208], ♂, 21.vii.1996; Sedm Lřnř near Źulovř, Petrovický potok brook [209], ♂, 18.viii.1998; Vřpennř, Zadnř Jřlovec hill [211], ♂, 30.vii.1995.

European species, also known from Transcaucasia, Tunisia and Morocco (JEŹEK 2004a), common.

Pericoma (Pachypericoma) fallax Eaton, 1893

Unpublished records. Pelnařův dřl valley near Uhelnř [53], 2 ♂♂, 18.viii.1998; Bukovice, Mlřnskř rybnřk pond [63], ♂, 21.ix.1998; Dolnř Moravice, Moravice river [161], 2 ♂♂, 15.vi.1994; Jamartice, Podolskř potok brook [163], ♂, 11.vi.1994; Hostice, Hostický potok brook [179], ♂, 13.vii.1998; Krřsně water reservoir [185], ♂, 23.vii.1994; Libina [186], ♂, 2.viii.1995; Vřclavovskř potok brook near Oskava [201], ♂, 2.viii.1995; Kobylř, Vidnavka river [207], ♂, 30.vii.1995; between Nřznerov and Źulovř, Střbrnř potok brook near Hadř vrch hill [208], ♂, 21.vii.1996; Sedm Lřnř near Źulovř, Petrovický potok brook [209], ♂, 18.viii.1998; Źulovř, Bařantnice near Velkř rybnřk pond [212], ♂, 30.vii.1995; Zlatě Hory, Skřivřnkovskř potok brook [226], ♂, 27.vi.1995.

European and West-Siberian species, also known from Transcaucasia (JEŹEK 2004a), common.

Pericoma (Pericoma) pseudoexquisita Tonnoir, 1940

Unpublished record. Skaliska near Rudoltice [194], ♂, 24.ix.2000.

European species, common.

Pneumia canescens (Meigen, 1804)

Unpublished record. Vlřice [54], ♂, 18.viii.1998.

European and West-Siberian species, common.

Pneumia crispi (Freeman, 1953)

Unpublished records. Brannř, limestone quarry [14], ♂, 19.vii.1999; Přednř Alojzov [26], ♂, 3.viii.1994; Novř hrad castle near Rařkov [33], ♂, 26.vii.1995; Pelnařův dřl valley near Uhelnř [53], ♂, 18.viii.1998; Vlřice [54], ♂, 18.viii.1998; Javořickř potok brook near Javořřk hill [111], ♂, 1.viii.1994.

European species, rare, endangered.

***Pneumia gracilis gracilis* (Eaton, 1893)**

Unpublished record. Vlčice [54], ♂, 18.viii.1998.

European subspecies, also known from Transcaucasia (JEŽEK 2004a), not very frequent.

***Pneumia mutua* (Eaton, 1893)**

Unpublished records. Bělá pod Pradědem (NW) [1], ♂, 28.vi.1999; Domašovský kopec hill [9], 2 ♂♂, 25.vi.1999; Rudohorská chata hut near Točnick Mt. [11], ♂, 24.vi.1999; Šumný Mt. [12], ♂, 24.vi.1999; between Branná and Ostružná [16], ♂, 12.vii.1994; Branná, Hučava brook [20], ♂, 16.vii.1994; between Nové Losiny and Přemyslov, viewpoint [24], ♂, 21.vii.1994; Kronfelzov (= Pastviny), Brusný potok brook [25], 2 ♂♂, 12.vii.1994 and 19.vii.1999; Prameny between Kopřivná and Žárová [35]; ♂, 26.vii.1995; Drakov near Mlýnský vrch hill, Černá Opava river [36], ♂, 27.vi.1995; Sokolí potok brook near Quinburk castle [39], ♂, 28.vi.1995; Filipovice (settlement) [42], ♂, 23.vi.1999; Filipovice, W of Úsvit rehabilitation centre [44], ♂, 27.vi.1999; Filipovice, Filipovické louky meadows [45], ♂, 23.vi.1999; Filipovice (NW), hill 874.4 m a.s.l. [46], ♂, 27.vi.1999; Sněžná kotlina basin near Červená hora Mt., Černý potok brook [47], 2 ♂♂, 27.vi.1999; hill 752 m a.s.l. near Podlesí [72], 2 ♂♂, 12.vi. and 14.vi.1994; Mlýnský potok brook near Klobouk hill [73], ♂, 13.vi.1994; Malá Morávka [76], 2 ♂♂, 6.vi.1994; between Malá Morávka and Rudná pod Pradědem [77], 2 ♂♂, 14.vi.1994; Mlýnský potok brook near Dolní Moravice [78], ♂, 16.vi.1994; Karlov pod Pradědem, Moravice river [79], ♂, 7.vi.1993; Moravice river, 1-3 km SE of Velká kotlina basin [80], 2 ♂♂, 7.vi.1994; Velká kotlina basin (lower part) [81], 2 ♂♂, 11.vi.1997; same locality, 3 ♂♂, 7.-14.vi. and 14.-26.vi.1994, MT, Ištvaněh and Ježek leg.; Velká kotlina basin (upper part) near Vysoká hole Mt. [82], 2 ♂♂, 7.vi.1994 and 11.vi.1997; Železný vrch hill near Malá Morávka [83], ♂, 12.vi.1994; Karlova Studánka, garden of the Museum of Geology and Svatý Hubert chapel [84], 2 ♂♂, 10.vi.1994 and 14.vi.1997; Karlova Studánka, Hvězda hotel [85], ♂, 10.vi.1994; Jelení bučina beech wood near Vidly [86], ♂, 25.v.1999, Lauterer leg.; Kopřivový vrch hill near Malá Morávka [87], ♂, 10.vi.1994; Kyselka near Suchá Rudná [88], ♂, 12.vi.1994; Suchá Rudná, Stará Voda brook [89], ♂, 10.vi.1994; Klepáčov, Zelené kameny Mt. [95], ♂, 13.vi.1994; Žlutý potok brook near Skříteck NNR [97], ♂, 13.vi.1994; Přemyslov [103], ♂, 21.vii.1994; Lví hora Mt., Dlouhá dolina valley near Horní Lipová [108], ♂, 21.vii.1996; Horní Lipová, near railway station [109], ♂, 13.vii.1994; Javořícký potok brook between Javořík hill and Bezný hill [112], ♂, 22.vii.1998; Kristovo rozloučení wooden cross near Orlík Mt., Šumný potok brook [123], ♂, 23.vi.2003; Orlík Mt. [125], ♂, 23.vi.2003; between Orlík Mt. and Velké Bradlo Mt. [126], ♂, 23.vi.2003; Ostruha Mt. [127], 2 ♂♂, 24.vi.2003; between Ostruha Mt. and Jelení loučky Mt. [128], ♂, 24.vi.2003; Šumný potok brook SW of Orlík Mt. [129], ♂, 24.vi.2003; Mravenečník Mt., Tetřeví chata hut [132], ♂, 14.vi.1995; Tupý vrch Mt. [133], ♂, 14.vi.1995; Alfrédka hovel near Jelenka Mt. [134], 2 ♂♂, 13.vi.1997; Divoký důl valley near Divoký kámen Mt. [138], ♂, 15.vi.1995; Praděd Mt., Františkova myslivna forester's house and Hubertka hovel [139], ♂, 16.vi.1995; Kamzičí vrch Mt., Střední Opava river [140], ♂, 9.vi.1994; waterfalls of Bílá Opava river between Ověčárna hostel and Karlova Studánka [142], 2 ♂♂, 12.-14.vi.1997; Střední Opava river near Sokol Mt. [143], ♂, 9.vi.1994; Vidly, Střední Opava river near Svatá Hedvika chapel [146], ♂, 9.vi.1994; Rejvíz, Bleskovec hill [150], ♂, 25.vii.1994; Opavská chata hunting lodge near Kazatelny Mt., Černá Opava river [153], 2 ♂♂, 28.vi.1995 and 23.vi.2003; Podzámecký potok brook near Koberštejn castle ruin (Zámecký vrch hill) [156], ♂, 26.vi.1995; Dolní Moravice, Moravice river [161], ♂, 15.vi.1994; Horní Moravice, Moravický potok brook [162], 3 ♂♂, 16.vi.1994; Malé Štáhle, Moravice river [164], ♂, 11.vi.1994; Stará Ves (western part) [165], ♂, 8.vi.1994; Stará Ves, Růžový potok brook [166], ♂, 8.vi.1994; Stará Ves, Staroveský potok brook [167], ♂, 8.vi.1994; Stříbrnice [176], ♂, 15.vii.1996; Třemešek, Jestřábí potok brook near Jestřáb Mt. [198], ♂, 13.vii.1995; Srnčí stráň slope near Nýznerov, Bučinský potok brook (sources) [210], ♂, 21.vii.1996; Andělská Hora [217], ♂, 12.vi.1994; Vrčno pod Pradědem, 2 km NW of Anenský vrch hill [218], ♂, 12.vi.1994; Mnichov, Suchý potok brook near Suchý vrch hill [222], 2 ♂♂, 29.vi.1995.

European species, common.

***Pneumia nubila* (Meigen, 1818)**

Unpublished records. Bělá pod Pradědem (NW) [1], 2 ♂♂, 28.vi.1999; between Branná and Ostružná [16], ♂, 12.vii.1994; between Šléglov and Vikantice [29], ♂, 19.vii.1999; Filipovice, Filipovické louky meadows [45], 2 ♂♂, 23.ix.1998 and 5.v.2000; Komářův dolinka valley near Sedm Křížů [50], ♂, 13.vii.1996; Panský potok brook

near Horní Hoštice [51], ♂, 22.ix.2000; Javorník, Pastvicka [52], ♂, 13.vii.1996; Pelnařův důl valley near Uhelná [53], ♂, 18.viii.1998; Bukovice, Bukovický vrch hill [62], 2 ♂♂, 21.ix.1998; Bukovice, Mlýnský rybník pond [63], ♂, 21.ix.1998; Lipová Lázně, 1.5 km SE of railway station [107], ♂, 13.vii.1994; Hrabíšín [182], ♂, 2.viii.1995; Václavov near Oskava [199], ♂, 2.viii.1995; Václavovský potok brook near Oskava [201], ♂, 2.viii.1995; Sedm Lánů near Žulová, Petrovický potok brook [209], ♂, 18.viii.1998; Žulová, Bažantnice near Velký rybník pond [212], 2 ♂♂, 30.vii.1995; Vidnava, Rokliny [213], ♂, 18.viii.1996; Stará Červená Voda [215], ♂, 18.viii.1996; Vrbno pod Pradědem, Bílý Potok [219], 2 ♂♂, 13.vii.1996; Zlaté Hory, Skřivánkuvský potok brook [226], ♂, 27.vi.1995.

European species, most common. Also known from Transcaucasia (JEŽEK 2004a).

Pneumia pilularia (Tonnoir, 1940)

Unpublished records. Bělá pod Pradědem (NW) [1], ♂, 24.ix.1998; Horní Domašov [10], ♂, 23.ix.1998; Panský potok brook near Horní Hoštice [51], ♂, 22.ix.2000; Bobrovník [61], ♂, 21.ix.1998; Bukovice, Bukovický vrch hill [62], 2 ♂♂, 21.ix.1998; Bukovice, Mlýnský rybník pond [63], ♂, 21.ix.1998; Lesní Mlýn near Dolní Moravice [75], ♂, 23.ix.2000; Štola pod Jelení cestou footpath, Hradecký most bridge [90], ♂, 23.ix.2000; between Dolní Údolí and Horní Údolí, Olešnica brook [152], 2 ♂♂, 15.ix.1994.

European species, common. Also known from Algeria, Morocco and Tajikistan (JEŽEK 2004a).

Pneumia plumicornis (Tonnoir, 1922)

Published record. JEŽEK (1996): Rejvíz – Orlí vrch hill [155].

Unpublished records. Bělá pod Pradědem env., Borový potok brook [3], ♂, 24.ix.1998; Domašov, Keprnický potok brook, Výrovka hovel [7], ♂, 23.ix.1998; Šumný potok brook between Malé Bradlo Mt. and Smrčí vrch Mt. [8], ♂, 22.ix.1998; Drakov near Mlýnský vrch hill, Černá Opava river [36], 2 ♂♂, 16.ix.1994; hill 806.6 m a.s.l., W of Heřmanovice [37], ♂, 16.ix.1994; Borový potok brook between Zaječí hora Mt. and Malé Bradlo Mt. [40], ♂, 24.ix.1998; Drátovna, Červenohorský potok brook [41], ♂, 23.ix.1998; Filipovice, Černý potok brook [43], ♂, 23.ix.1998; Adolfovice, shooting range, Šumný potok brook [58], ♂, 22.ix.1989; Bobrovník [61], ♂, 21.ix.1998; Bukovice, Mlýnský rybník pond [63], ♂, 21.ix.1998; 1 km NE of Mýtinka near Děťichov [67], ♂, 14.ix.1994; between Kotelní potok brook (Malý Kotel area) and Volárka brook (Malý Máj area) [74], ♂, 23.ix.2000; Štola pod Jelení cestou footpath, Hradecký most bridge [90], ♂, 23.ix.2000; Ostruha Mt. [127], ♂, 22.ix.1998; between Ostruha Mt. and Jelení loučky Mt. [128], ♂, 22.ix.1998; Šumný potok brook between Velké Bradlo Mt. and Ostruha Mt. [130], ♂, 22.ix.1998; between Dolní Údolí and Horní Údolí, Olešnica brook [152], 3 ♂♂, 15.ix.1994; Žďárský Potok, Slatinný potok brook [168], ♂, 24.ix.2000; Žďárský Potok, Stříbrný potok brook near Ostroh hill [169], ♂, 24.ix.2000.

European species, locally common.

Pneumia stammeri (Jung, 1956)

Unpublished records. Kopřivový vrch hill near Malá Morávka [87], ♂, 10.vi.1994; Kyselka near Suchá Rudná [88], ♂, 12.vi.1994; Suchá Rudná, Stará Voda brook [89], 2 ♂♂, 10.vi.1994; Horní Lipová, near railway station [109], ♂, 13.vii.1994.

European species, endangered, rather rare.

Pneumia trivialis (Eaton, 1893)

Unpublished records. Bělá pod Pradědem (NW) [1], ♂, 28.vi.1999; Domašovský kopec hill [9], ♂, 25.vi.1999; Horní Domašov [10], ♂, 23.ix.1998; Branná, limestone quarry [14], ♂, 19.vii.1999; Františkov hamlet, Hučava brook [19], ♂, 21.vii.1994; Hučava brook near Nová Branná [21], ♂, 3.viii.1994; Nové Losiny [23], 2 ♂♂, 11.vii. and 21.vii.1994; Kronfelzov (= Pastviny), Brusný potok brook [25], 4 ♂♂, 11.-12.vii.1998 and 19.vii.1999; Přední Alojzov [26], ♂, 3.viii.1994; Sklenský vrch hill near Nové Losiny [27], ♂, 18.vii.1998; Šléglov [28], ♂, 19.vii.1999;

between Šléglov and Vikantice [29], ♂, 19.vii.1999; Osikov near Kopřivná, Ořešník hill [34], ♂, 15.vii.1998; Filipovice (settlement) [42], ♂, 23.vi.1999; Filipovice, Černý potok brook [43], 2 ♂♂, 23.ix.1998 and 23.vi.1999; Filipovice, Filipovické louky meadows [45], 4 ♂♂, 23.ix.1998, 23.vi. and 27.vi.1999, 5.v.2000; Sněžná kotlina basin near Červená hora Mt., Černý potok brook [47], ♂, 5.v.2000; between Horní Fořt and Dolní Fořt, Červený potok brook [49], ♂, 18.viii.1998; Komáří dolinka valley near Sedm Křížů [50], ♂, 13.vii.1996; Panský potok brook near Horní Hoštice [51], ♂, 22.ix.2000; Javorník, Pastvicka [52], ♂, 13.vii.1996; Pelnařův důl valley near Uhelná [53], 2 ♂♂, 18.viii.1998; Vlčice [54], ♂, 18.viii.1998; Javorník, Zaječí vrch hill (small chapel) [55], ♂, 13.vii.1996; Jeseník, Bělá river [56], ♂, 13.vii.1994; Jeseník, Řecký pramen spring [57], ♂, 25.vii.1994; 1 km NE of Bílé skály Mt. [60], ♂, 25.vii.1994; Bobrovník [61], ♂, 21.ix.1998; Bukovice, Bukovický vrch hill [62], 2 ♂♂, 21.ix.1998; Bukovice, Mlýnský rybník pond [63], ♂, 21.ix.1998; Chebží near Česká Ves [64], ♂, 16.vii.1995; Dolní Domašov, Keprnický potok brook [68], ♂, 28.vi.1999; Pekelník hill near Česká Ves [70], ♂, 16.vii.1995; hill 752 m a.s.l. near Podleší [72], 2 ♂♂, 12. and 14.vi.1994; Lesní Mlýn near Dolní Moravice [75], ♂, 23.ix.2000; Karlov pod Pradědem, Moravice river [79], 2 ♂♂, 6.-7.vi.1994; Velká kotlina basin (lower part) [81], ♂, 18.ix.-1.x.1994, MT, Grim leg.; Železný vrch hill near Malá Morávka [83], ♂, 12.vi.1994; Kouty nad Desnou, Dlouhé Stráně hotel env. [98], ♂, 18.viii.1999; Kouty nad Desnou, Divoká Desná river, 1 km E of railway station [99], 2 ♂♂, 13.vi.1995 and 18.viii.1999; Kouty nad Desnou, Annín, Hučivá Desná river [100], ♂, 18.viii.1999; Rejhotice [106], ♂, 21.vii.1994; Lipová Lázně, 1.5 km SE of railway station [107], 3 ♂♂, 13.vii. and 1.viii.1994; Horní Lipová, Sněhulák hill [110], ♂, 12.vii.1994; Javořícký potok brook near Javořík hill [111], ♂, 1.viii.1994; Javořícký potok brook between Javořík hill and Bezný hill [112], ♂, 22.vii.1998; Lipová Lázně, between Javořík hill and Miroslav [113], ♂, 22.vii.1998; Lipová Lázně, Toč hill [115], ♂, 22.vii.1998; Loučná nad Desnou, Desná river near railway station [116], ♂, 21.vii.1995; Loučná nad Desnou, Sedmidvory, Kamenitý potok brook [118], ♂, 21.vii.1995; Loučná nad Desnou, Třiramenný potok brook [119], ♂, 21.vii.1995; Vernířovice [120], ♂, 21.vii.1995; between Vernířovice and Maršíkov, Zadní vrch hill [121], ♂, 29.vii.1995; Loučná nad Desnou, Vlčí sedlo saddleback near Kluč Mt. and Sedmidvory [122], ♂, 21.vii.1995; Ramzovské sedlo saddleback [148], ♂, 12.vii.1994; Rejvíz, settlement [149], ♂, 6.v.2000; Rejvíz, Chlapecké kameny Mt. [151], ♂, 14.ix.1994; Sporný hill near Chebží [157], ♂, 16.vii.1995; Dolní Moravice, Moravice river [161], 2 ♂♂, 15.vi.1994 and 5.v.2000; Horní Moravice, Moravický potok brook [162], 2 ♂♂, 16.vi.1994; Stará Ves (western part) [165], 4 ♂♂, 8.vi.1994; Květná, Krupá brook [173], 2 ♂♂, 15.vii.1996 and 17.vii.1999; Malé Vrbno, Telčava brook near Moravia hotel [174], ♂, 11.vii.1998; Hostice, Hostický potok brook [179], ♂, 13.vii.1998; Hraběšice [180], ♂, 23.vii.1994; between Hraběšice and Rudoltice [181], ♂, 23.vii.1994; Hrabíšín [182], ♂, 2.ix.1995; Kokeš hill between Šumperk and Bratrušov [183], ♂, 15.vii.1998; Krásné [184], ♂, 23.vii.1994; Desná river between Maršíkov and Velké Losiny [187], ♂, 20.vii.1995; Mladoňov, Na Samotě [188], ♂, 13.vii.1995; Nový Malín [189], ♂, 13.vii.1995; Nový Malín, Malínská rokle valley [190], ♂, 2.viii.1995; Petrov nad Desnou [192], ♂, 20.vii.1995; Rejchartice, Červená hill [193], ♂, 26.vii.1995; Sobotín [195], ♂, 20.vii.1995; Troustice hill near Krásné (settlement) [196], ♂, 23.vii.1994; Václavov near Oskava [199], ♂, 2.viii.1995; between Václavov and Mladoňov [200], ♂, 2.vi.1995; Zámeček between Šumperk and Bludov [204], ♂, 13.vii.1998; Zlatník viewpoint near Radomilov [205], ♂, 13.vii.1998; between Nýznerov and Žulová, Stříbrný potok brook near Hadí vrch hill [208], ♂, 21.vii.1996; Sedm Lánů near Žulová, Petrovický potok brook [209], ♂, 18.viii.1998; Vápenná, Zadní Jílovec hill [211], ♂, 30.vii.1995; Žulová, Bažantnice near Velký rybník pond [212], 2 ♂♂, 30.vii.1995; Vidnava, Rokliny [213], ♂, 18.viii.1996; Stará Červená Voda [215], ♂, 18.viii.1996; Vrbno pod Pradědem, Bílý Potok [219], 2 ♂♂, 13.vii.1996; Karlovice, Zámecký vrch hill [220], ♂, 29.vi.1995; Zlaté Hory, Skřivánkovský potok brook [226], ♂, 27.vi.1995.

European species, very common.

Saraiella parva (Vaillant, 1963)

Published records. JEŽEK (2003): Karlov pod Pradědem env., Velká kotlina basin, Moravice stream [82]; Karlova Studánka, Bílá Opava river [84]; Zelené Kameny Mt. near Skřitek NNR [95]; Jelenka Mt., Alfrédka hovel env. [134]; Praděd Mt., Barborka hostel, Bílá Opava stream [135]; Divoký důl valley between Praděd Mt. and Divoký Kámen Mt. [138]; waterfalls of Bílá Opava river near Ověčrna hostel [142]; Malý Děd Mt., Švýčarna hovel env. [144].

European species, critically endangered, rare.

***Saraiella rotunda* (Krek, 1970)**

Published records. JEŽEK (1996): Vysoká hole Mt., Velká kotlina basin [82] and Videlské sedlo pass near Vidly [145].

Unpublished records. Bystrý potok stream near Šumný Mt. [5], ♂, 24.vi.1999; Šumný potok brook between Malé Bradlo Mt. and Smrčí vrch Mt. [8], ♂, 22.ix.1998; Františkov hamlet, Hučava brook [19], ♂, 3.viii.1994; Hučava brook near Nová Branná [21], ♂, 3.viii.1994; Filipovice, Černý potok brook [43], ♂, 23.ix.1998; Mlýnský potok brook near Klobouk hill [73], ♂, 13.vi.1994; Karlov pod Pradědem, Moravice river [79], 2 ♂♂, 7.vi.1993 and 7.vi.1994; Moravice river, 1-3 km SE of Velká kotlina basin [80], 3 ♂♂, 7.vi.1994; Velká kotlina basin (lower part) [81], ♂, 11.vi.1997; Velká kotlina basin (upper part) near Vysoká hole Mt. [82], 2 ♂♂, 11.vi.1997; Kepník Mt. [91], ♂, 26.vi.1999; Klepáčov, Zelené kameny Mt. [95], ♂, 13.vi.1994; Klepáčov, Ztracené skály Mt. [96], ♂, 13.vi.1994; Kouty nad Desnou, Annín, Hučivá Desná river [100], ♂, 18.viii.1999; Hučivá Desná river near Šindelová hora Mt. [105], ♂, 18.viii.1999; Orlík Mt. [125], ♂, 23.vi.2003; between Orlík Mt. and Velké Bradlo Mt. [126], ♂, 23.vi.2003; Ostruha Mt. [127], ♂, 24.vi.2003; between Ostruha Mt. and Jelení loučky Mt. [128], 2 ♂♂, 22.ix.1998 and 24.vi.2003; Divoká Desná river near Tupý vrch Mt. [131], ♂, 15.vi.1995; Mravenečník Mt., Tetěví chata hut [132], ♂, 14.vi.1995; Tupý vrch Mt. [133], ♂, 14.vi.1995; Břidličná hora Mt., Jelení studánka spring [136], ♂, 13.vi.1997; Česnekový důl valley, Česnekový potok brook [137], ♂, 15.vi.1995; Divoký důl valley near Divoký kámen Mt. [138], ♂, 10.vi.1997; Praděd Mt., Františkova myslivna forester's house and Hubertka hovel [139], ♂, 16.vi.1995; Kamzičí vrch Mt., Střední Opava river [140], ♂, 9.vi.1994; near Ovčárna hostel [141], ♂, 12.vi.1997; waterfalls of Bílá Opava river between Ovčárna hostel and Karlova Studánka [142], 2 ♂♂, 11.vi.1974, Rozkošný leg. and 12.vi.1997 Ježek leg.; Střední Opava river near Sokol Mt. [143], ♂, 9.vi.1994; Švýčárna hovel near Velký Jezerník Mt. [144], ♂, 10.vi.1997; Srnčí stráň slope near Nýznerov, Bučinský potok brook (sources) [210], ♂, 21.vii.1996; Vrbno pod Pradědem, 2 km NW of Anenský vrch hill [218], ♂, 12.vi.1994.

Sub-Mediterranean species, critically endangered, locally common.

***Szaboiella hibernica* (Tonnoir, 1940)**

Published records. JEŽEK (1996, 2004b): Šumárník hovel env., Šumný Mt. [12]; Bělá pod Pradědem env., Filipovice [46]; Adolfovice, V Mlýnkách, Javořícký potok brook [59]; Chebží near Česká Ves [64]; Velká kotlina basin near Karlov pod Pradědem [81]; Kouty nad Desnou env., Přemyslov [103]; Horní Lipová env., Lví hora Mt., Dlouhá dolina valley [108]; Lipová Lázně env., Toč hill [115]; Přemyslov env., Jelení skok hill [117]; Brousek Mt. near Ramzová, Černý potok brook [147]; Ramzová [148]; Rejvíz, Bleskovec hill [150]; Stará Ves, Růžový potok brook [166]; Třemešek [197]; Třemešek env., Jestřábí hill, Jestřábí potok brook [198]; Nýznerov env., Kopřivník Mt., Bučinský potok brook [206]; Suchý vrch hill near Mnichov [222].

Unpublished records. Karlova Studánka, garden of the Museum of Geology and Svatý Hubert chapel [84], ♂, 14.vi.1997; Javořícký potok brook near Javořík hill [111], ♂, 22.vii.1998.

European species, also known from Transcaucasia, locally common.

***Tonnoiriella nigricauda* (Tonnoir, 1919)**

Published record. JEŽEK (1996): Krásné [184].

Unpublished record. Železný vrch hill near Malá Morávka [83], ♂, 6.vi.1994.

European species, critically endangered, not common.

***Tonnoiriella pulchra* (Eaton, 1893)**

Unpublished records. Filipovice, Filipovické louky meadows [45], ♂, 23.ix.1998; Bukovice, Bukovický vrch hill [62], ♂, 21.ix.1998; hill 752 m a.s.l. near Podlesí [72], ♂, 12.vi.1994; Karlov pod Pradědem, Moravice river [79], ♂, 6.vi.1994; Lipová Lázně, 1.5 km SE of railway station [107], ♂, 1.viii.1994; between Vernřovice and Maršíkov, Zadaný vrch hill [121], ♂, 29.vii.1995; Bedřichov [178], 2 ♂♂, 28.v.1970, Martinovský leg.

European species, not very frequent.

***Tonnoiriella sieberti* Wagner, 1993**

Published record. JEŽEK (1999): Jeseník – Bukovice, Mlýnský rybník pond [63].

Sub-Mediterranean species, also known from Syria (JEŽEK 1999), endangered, rare.

***Ulomyia annulata annulata* (Tonnoir, 1919)**

Unpublished records. Pelnařův důl valley near Uhelná [53], ♂, 18.viii.1998; Desná river between Maršíkov and Velké Losiny [187], ♂, 20.vii.1995.

European and West-Siberian subspecies, not very frequent.

***Ulomyia cognata* (Eaton, 1893)**

Unpublished records. Drakov near Mlýnský vrch hill, Černá Opava river [36], ♂, 27.vi.1995; Moravice river, 1-3 km SE of Velká kotlina basin [80], ♂, 7.vi.1994; Jelení bučina beech-wood near Vidly [86], ♂, 25.v.1999, Lauterer leg.; Kouty nad Desnou, Dlouhé Stráně hotel env. [98], ♂, 18.viii.1999; Kouty nad Desnou, Annín, Hučivá Desná river [100], ♂, 18.viii.1999; Kouty nad Desnou, Smutný žleb gorge [104], ♂, 18.viii.1999; Švýčárna hovel near Velký Jezerník Mt. [144], ♂, 10.vi.1997; Nový Malín, Malínská rokle valley [190], ♂, 2.viii.1995; Velké Losiny, Losinka brook near Lískovec hill [202], ♂, 25.vii.1995.

European species, common.

***Ulomyia fuliginosa* (Meigen, 1804)**

Unpublished records. Bělá pod Pradědem (NW) [1], 5 ♂♂, 24.ix.1998, 28.vi. and 19.vii.1999; Bělá pod Pradědem, NE of Bršt' hill [4], 2 ♂♂, 28.vi.1999; Šumný potok brook between Malé Bradlo Mt. and Smrčí vrch Mt. [8], ♂, 22.ix.1998; Domašovský kopec hill [9], 2 ♂♂, 25.vi.1999; Horní Domašov [10], ♂, 23.ix.1998; Šumný Mt. [12], ♂, 24.vi.1999; Branná, limestone quarry [14], ♂, 19.vii.1999; Branná river [15], ♂, 12.vii.1994; Elba (= Labe) near Nové Losiny [17], ♂, 18.vii.1998; Františkov hamlet, Hučava brook [19], 2 ♂♂, 21.vii. and 3.viii.1994; viewpoint between Nové Losiny and Přemyslov [24], ♂, 21.vii.1994; Kronfelzov (= Pastviny), Brusný potok brook [25], 2 ♂♂, 11.vii.1994 and 11.vii.1998; Přední Alojzov [26], ♂, 3.viii.1994; Sklenský vrch hill near Nové Losiny [27], ♂, 18.vii.1998; Šléglov [28], ♂, 19.vii.1999; between Šléglov and Vikantice [29], ♂, 19.vii.1999; Kopřivná [32], ♂, 26.vii.1995; Osíkov near Kopřivná, Ořešník hill [34], ♂, 15.vii.1998; Prameny between Kopřivná and Žárová [35], ♂, 26.vii.1995; Drakov near Mlýnský vrch hill, Černá Opava river [36], 2 ♂♂, 16.ix.1994 and 27.vi.1995; hill 806.6 m a.s.l., W of Heřmanovice [37], ♂, 16.ix.1994; Drátovna, Červenohorský potok brook [41], ♂, 23.ix.1998; Filipovice, Černý potok brook [43], 2 ♂♂, 23.ix.1998 and 23.vi.1999; Filipovice, W of Úsvit rehabilitation centre [44], ♂, 27.vi.1999; Filipovice, Filipovické louky meadows [45], 4 ♂♂, 23.ix.1998, 23.vi. and 27.vi.1999, 5.v.2000; Filipovice (NW), hill 874.4 m a.s.l. [46], ♂, 27.vi.1999; Sněžná kotlina basin near Červená hora Mt., Černý potok brook [47], 2 ♂♂, 27.vi.1999 and 5.v.2000; Komářův dolinka valley near Sedm Křížů [50], ♂, 13.vii.1996; Panský potok brook near Horní Hoštice [51], ♂, 22.ix.2000; Javorník, Pastvicka [52], ♂, 13.vii.1996; Pelnařův důl valley near Uhelná [53], ♂, 18.viii.1998; Vlčice [54], ♂, 18.viii.1998; Javorník, Zaječí vrch hill (small chapel) [55], ♂, 13.vii.1996; Jeseník, Řecký pramen spring [57], ♂, 25.vii.1994; Adolfovice, shooting range, Šumný potok brook [58], ♂, 1.viii.1994; Adolfovice, Javořícký potok brook, V Mlýnkách [59], ♂, 1.viii.1994; Bobrovník [61], ♂, 21.ix.1998; Bukovice, Bukovický vrch hill [62], 4 ♂♂, 21.ix.1998; Bukovice, Mlýnský rybník pond [63], ♂, 21.ix.1998; Chebíz near Česká Ves [64], ♂, 16.vii.1995; Čertovy kameny viewpoint near Česká Ves [65], ♂, 25.vii.1994; 1 km NE of Mýtinka near Dětrichov [67], ♂, 14.ix.1994; Pekelník hill near Česká Ves [70], ♂, 16.vii.1995; hill 752 m a.s.l. near Podlesí [72], ♂, 12.vi.1994; Malá Morávka [76], ♂, 6.vi.1994; between Malá Morávka and Rudná pod Pradědem [77], 2 ♂♂, 14.vi.1994; Karlov pod Pradědem, Moravice river [79], 3 ♂♂, 6.-7.vi.1994; Moravice river, 1-3 km SE of Velká kotlina basin [80], ♂, 7.vi.1994; Železný vrch hill near Malá Morávka [83], ♂, 12.vi.1994; Kopřivový vrch hill near Malá Morávka [87], ♂, 10.vi.1994; Štola

pod Jelení cestou footpath, Hradecký most bridge [90], ♂, 23.ix.2000; Kouty nad Desnou, Divoká Desná river, 1 km E of railway station [99], 2 ♂♂, 13.vi.1995 and 18.viii.1999; Přemyslov [103], ♂, 21.vii.1994; Kouty nad Desnou, Smutný žleb gorge [104], ♂, 18.viii.1999; Rejhotice [106], ♂, 21.vii.1994; Lipová Lázně, 1.5 km SE of railway station [107], 4 ♂♂, 13.vii., 27.vii., and 1.viii.1994; Lví hora Mt., Dlouhá dolina valley near Horní Lipová [108], ♂, 21.vii.1996; Horní Lipová, Sněhulák hill [110], ♂, 12.vii.1994; Javořický potok brook near Javořík hill [111], 3 ♂♂, 1.viii.1994 and 22.vii.1998; Javořický potok brook between Javořík hill and Bezný hill [112], ♂, 22.vii.1998; Lipová Lázně, between Javořík hill and Miroslav [113], ♂, 22.vii.1998; Lipová Lázně, Toč hill [115], ♂, 22.vii.1998; Loučná nad Desnou, Jelení skok Mt. [117], ♂, 25.vii.1995; Loučná nad Desnou, Sedmidvory, Kamenitý potok brook [118], ♂, 21.vii.1995; Loučná nad Desnou, Třframenný potok brook [119], ♂, 21.vii.1995; Vernířovice [120], ♂, 21.vii.1995; between Vernířovice and Maršíkov, Zadní vrch hill [121], ♂, 29.vii.1995; Loučná nad Desnou, Vlčí sedlo saddleback near Kluč hill and Sedmidvory [122], ♂, 21.vii.1995; Šumný potok brook between Velké Bradlo Mt. and Ostruha Mt. [130], ♂, 22.ix.1998; Rejvíz, Bleskovec hill [150], ♂, 25.vii.1994; between Dolní Údolí and Horní Údolí, Olešnica brook [152], 4 ♂♂, 15.ix.1994 and 28.vi.1995; Opavská chata hunting lodge near Kazatelny Mt., Černá Opava river [153], ♂, 23.vi.2003; Rejvíz, Orlí vrch hill [155], ♂, 15.ix.1994; Sporný Mt. near Chebří [157], ♂, 16.vii.1995; Horní Moravice, Moravický potok brook [162], 3 ♂♂, 16.vi.1994; Stará Ves (western part) [165], 3 ♂♂, 8.vi.1994; Stará Ves, Růžový potok brook [166], ♂, 8.vi.1994; Stará Ves, Staroveský potok brook [167], ♂, 8.vi.1994; between Staré Město pod Sněžníkem and Hajmrlův [171], ♂, 17.vii.1999; S of Hadcová hill near Nový Rumburk [172], ♂, 15.vii.1996; Květná, Krupá brook [173], ♂, 17.vii.1999; Malé Vrbno, Telčava brook near Moravia hotel [174], ♂, 11.vii.1998; Stříbrnice [176], ♂, 15.vii.1996; Hraběšice [180], ♂, 23.vii.1994; between Hraběšice and Rudoltice [181], ♂, 23.vii.1994; Hrabišín [182], ♂, 2.viii.1995; Kokeš hill between Šumperk and Bratrušov [183], ♂, 15.vii.1998; Krásné [184], ♂, 23.vii.1994; Mladoňov, Na Samotě [188], ♂, 13.vii.1995; Nový Malín [189], ♂, 13.vii.1995; Nový Malín, Malínská rokle valley [190], ♂, 2.viii.1995; Petrov nad Desnou [192], ♂, 20.vii.1995; Rejchartice, Červená hill [193], ♂, 26.vii.1995; Třemešek [197], ♂, 13.vii.1995; Velké Losiny, Losinka brook near Lískovec hill [202], ♂, 25.vii.1995; Zámeček between Šumperk and Bludov [204], ♂, 13.vii.1998; Zlatník viewpoint near Radomilov [205], ♂, 13.vii.1998; Vápenná, Zadní Jílovec hill [211], ♂, 30.vii.1995; Žulová, Bažantnice near Velký rybník pond [212], ♂, 30.vii.1995; Vidnava, Rokliny [213], ♂, 18.viii.1996; Stachlovice [214], ♂, 18.viii.1996; Vrbno pod Pradědem [216], ♂, 26.vi.2003; Andělská Hora [217], ♂, 12.vi.1994; Vrbno pod Pradědem, Bílý Potok [219], 2 ♂♂, 13.vii.1996; Karlovice, Zámecký vrch hill [220], ♂, 29.vi.1995; Mnichov, Suchý potok brook near Suchý vrch hill [222], ♂, 26.vi.2003; Mikulovice, Lesní potok brook [225], ♂, 16.vii.1995; Zlaté Hory, Skřivánkovský potok brook [226], ♂, 27.vi.1995.

European species, one of the most common ones.

Ulomyia plumata (Tonnoir, 1919)

Published records. JEŽEK (1996): Skřítek [94] and Stará Ves [165].

Unpublished records. Kouty nad Desnou, Divoká Desná river, 1 km E of railway station [99], ♂, 13.vi.1995; Přemyslov [103], ♂, 25.vii.1995; Třemešek [197], ♂, 13.vii.1995; Třemešek, Jestřábí potok brook near Jestřáb Mt. [198], ♂, 13.vii.1995.

European species, critically endangered, rare.

Ulomyia vaseki Ježek, 2002

Published records. JEŽEK (2002) – paratypes: Zlatý Chlum Mt. near Jeseník [71]; Velká kotlina basin near Vysoká hole Mt., Moravice stream [82]; between Přemyslov and Jelení skok Mt. [117]; Černý potok brook env., Travná hora Mt., Brousek Mt. and Smrk Mt. [147]; Ramzová [148]; Bleskovec Mt. near Rejvíz [150]; Návrší near Stříbrnice [176]; Velké Vrbno [177].

Unpublished record. Mt. 1051.2 m a.s.l. near Orlík Mt. [124], ♂, 23.vi.2003.

European species, endangered, rare.

Composition of the fauna of moth flies of all visited localities

(CR, EN, VU and NS species are marked)

1 – *Peripsychoda auriculata*, *Logima satchelli*, *L. zetterstedti*, *Psychoda phalaenoides*, *Psychodocha gemina*, *Psychomorpha trinodulosa*, *Berdeniella unispinosa*, *Pneumia mutua*, *P. nubila*, *P. pilularia*, *P. trivialis*, *Ulomyia fuliginosa*. 2 – *Psychoda phalaenoides*, *Psychodocha cinerea*, *Berdeniella manicata*. 3 – *Psychoda phalaenoides*, *Psychodocha gemina*, *Tinearia alternata*, *Pneumia plumicornis*. 4 – *Chodopsycha lobata*, *Logima satchelli*, *Psychoda phalaenoides*, *Ulomyia fuliginosa*. 5 – *Saraiella rotunda* [CR]. 6 – *Threticus lucifugus*, *T. silvaticus* [VU], *Chodopsycha lobata*, *Psychodocha gemina*. 7 – *Psychoda phalaenoides*, *Pneumia plumicornis*. 8 – *P. plumicornis*, *Saraiella rotunda* [CR], *Ulomyia fuliginosa*. 9 – *Trichopsychoda hirtella*, *Copropsychoda brevicornis*, *Logima albipennis*, *L. satchelli*, *L. zetterstedti*, *Psychocha griseascens*, *Psychoda phalaenoides*, *P. uniformata*, *Psychodocha gemina*, *Psychomorpha trinodulosa*, *Tinearia alternata*, *Ypsidocha setigera*, *Pneumia mutua*, *P. trivialis*, *Ulomyia fuliginosa*. 10 – *Philosepedon humerale*, *Logima erminea*, *Tinearia alternata*, *Clytocyclus ocellaris*, *Pneumia pilularia*, *P. trivialis*, *Ulomyia fuliginosa*. 11 – *Pneumia mutua*. 12 – *Psychoda phalaenoides*, *Pneumia mutua*, *Szaboiella hibernica* [CR], *Ulomyia fuliginosa*. 13 – *Philosepedon humerale*. 14 – *Yomormia furva* [NS], *Logima albipennis*, *L. zetterstedti*, *Psychoda phalaenoides*, *Psychodocha gemina*, *Psychomorpha trinodulosa*, *Tinearia alternata*, *Berdeniella kocii* sp. nov. [NS], *B. unispinosa*, *Pneumia crispus* [EN], *P. trivialis*, *Ulomyia fuliginosa*. 15 – *Sycorax tonnoiri* [CR], *Chodopsycha lobata*, *Psychoda phalaenoides*, *Psychodocha gemina*, *Ypsidocha setigera*, *Berdeniella manicata*, *Ulomyia fuliginosa*. 16 – *Berdeniella kocii* sp. nov. [NS], *B. manicata*, *Pneumia mutua*, *P. nubila*. 17 – *Trichopsychoda hirtella*, *Berdeniella unispinosa*, *Clytocyclus ocellaris*, *Ulomyia fuliginosa*. 18 – *Berdeniella unispinosa*. 19 – *Logima satchelli*, *Psychodocha gemina*, *Berdeniella unispinosa*, *Clytocyclus ocellaris*, *Pneumia trivialis*, *Saraiella rotunda* [CR], *Ulomyia fuliginosa*. 20 – *Pneumia mutua*. 21 – *P. trivialis*, *Saraiella rotunda* [CR]. 22 – *Clytocyclus ocellaris*. 23 – *Psychoda phalaenoides*, *Berdeniella unispinosa*, *Pneumia trivialis*. 24 – *Philosepedon austriacum*, *Logima albipennis*, *Psychoda phalaenoides*, *Berdeniella unispinosa*, *Clytocyclus ocellaris*, *Pneumia mutua*, *Ulomyia fuliginosa*. 25 – *Philosepedon humerale*, *Logima albipennis*, *L. satchelli*, *L. zetterstedti*, *Psychocha griseascens*, *Psychoda phalaenoides*, *Psychodocha gemina*, *Psychomorpha trinodulosa*, *Berdeniella kocii* sp. nov. [NS], *B. unispinosa*, *Clytocyclus ocellaris*, *Pneumia mutua*, *P. trivialis*, *Ulomyia fuliginosa*. 26 – *Berdeniella kocii* sp. nov. [NS], *B. stavnicensis*, *B. vimmeri*, *Pneumia crispus* [EN], *P. trivialis*, *Ulomyia fuliginosa*. 27 – *Berdeniella unispinosa*, *Clytocyclus ocellaris*, *Pneumia trivialis*, *Ulomyia fuliginosa*. 28 – *Threticus lucifugus*, *Trichopsychoda hirtella*, *Logima albipennis*, *L. satchelli*, *L. zetterstedti*, *Psychoda phalaenoides*, *Psychodocha gemina*, *Psychomorpha trinodulosa*, *Tinearia alternata*, *Clytocyclus ocellaris*, *Pneumia trivialis*, *Ulomyia fuliginosa*. 29 – *Logima zetterstedti*, *Psychoda phalaenoides*, *Psychodocha cinerea*, *P. gemina*, *Psychomorpha trinodulosa*, *Ypsidocha setigera*, *Clytocyclus ocellaris*, *Pneumia nubila*, *P. trivialis*, *Ulomyia fuliginosa*. 30 – *Berdeniella unispinosa*. 31 – *Logima albipennis*, *Psychoda phalaenoides*. 32 – *Logima albipennis*, *L. satchelli*, *Ulomyia fuliginosa*. 33 – *Trichopsychoda hirtella*, *Logima albipennis*, *L. satchelli*, *Psychodocha gemina*, *Pneumia crispus* [EN]. 34 – *Clytocyclus ocellaris*, *Pneumia trivialis*, *Ulomyia fuliginosa*. 35 – *Logima albipennis*, *Psychoda phalaenoides*, *Pneumia mutua*, *Ulomyia fuliginosa*. 36 – *Philosepedon humerale*, *Chodopsycha lobata*, *Copropsychoda brevicornis*, *Logima albipennis*, *L. satchelli*, *Psychoda phalaenoides*, *Berdeniella unispinosa*, *Pneumia mutua*, *P. plumicornis*, *Ulomyia cognata*, *U. fuliginosa*. 37 – *Philosepedon humerale*, *Logima albipennis*, *L. satchelli*, *Psychoda phalaenoides*, *Ypsidocha setigera*, *Pneumia plumicornis*, *Ulomyia fuliginosa*. 38 – *Logima satchelli*, *Berdeniella stavnicensis*, *B. unispinosa*. 39 – *Logima satchelli*, *Berdeniella unispinosa*, *Pneumia mutua*. 40 – *Logima satchelli*, *Psychoda phalaenoides*, *Pneumia plumicornis*. 41 – *Trichopsychoda hirtella*, *Pneumia plumicornis*, *Ulomyia fuliginosa*. 42 – *Trichopsychoda hirtella*, *Logima satchelli*, *L. zetterstedti*, *Psychoda phalaenoides*, *Berdeniella kocii* sp. nov. [NS], *Berdeniella unispinosa*, *Pneumia mutua*, *P. trivialis*. 43 – *Psychoda phalaenoides*, *Psychodocha cinerea*, *Berdeniella unispinosa*, *Pneumia plumicornis*, *P. trivialis*, *Saraiella rotunda* [CR], *Ulomyia fuliginosa*. 44 – *Trichopsychoda hirtella*, *Logima satchelli*, *L. zetterstedti*, *Psychoda phalaenoides*, *Berdeniella kocii* sp. nov. [NS], *Pneumia mutua*, *Ulomyia fuliginosa*. 45 – *Threticus lucifugus*, *Trichopsychoda hirtella*, *Chodopsycha lobata*, *Logima satchelli*, *L. zetterstedti*, *Psychoda phalaenoides*, *Psychodocha gemina*, *Ypsidocha setigera*, *Clytocyclus ocellaris*, *Pneumia mutua*, *P. nubila*, *P. trivialis*, *Tonnoiriella pulchra*, *Ulomyia fuliginosa*. 46 – *Psychoda phalaenoides*, *Pneumia mutua*, *Szaboiella hibernica* [CR], *Ulomyia fuliginosa*. 47 –

Psychodocha gemina, *Pneumia mutua*, *P. trivialis*, *Ulomyia fuliginosa*. **48** – *Psycha grisescens*. **49** – *Trichopsychoda hirtella*, *Berdeniella manicata*, *B. vimmeri*, *Pneumia trivialis*. **50** – *Peripsychoda auriculata*, *Pneumia trivialis*, *Ulomyia fuliginosa*. **51** – *Pneumia nubila*, *P. pilularia*, *P. trivialis*, *Ulomyia fuliginosa*. **52** – *Peripsychoda auriculata*, *Telmatoscopus labeculosus* [EN], *Pneumia nubila*, *P. trivialis*, *Ulomyia fuliginosa*. **53** – *Peripsychoda auriculata*, *Logima satchelli*, *Berdeniella manicata*, *Clytocerus ocellaris*, *Pericoma blandula*, *P. fallax*, *Pneumia crispus* [EN], *P. nubila*, *P. trivialis*, *Ulomyia annulata*, *U. fuliginosa*. **54** – *Chodopsycha lobata*, *Psychoda phalaenoides*, *Berdeniella manicata*, *B. stavniensis*, *B. vimmeri*, *Pneumia canescens*, *P. crispus* [EN], *P. gracilis*, *P. trivialis*, *Ulomyia fuliginosa*. **55** – *Peripsychoda auriculata*, *Pneumia trivialis*, *Ulomyia fuliginosa*. **56** – *Logima albipennis*, *L. satchelli*, *L. zetterstedti*, *Psychomorpha trinodulosa*, *Pneumia trivialis*. **57** – *Parabazarella subneglecta*, *Pneumia trivialis*, *Ulomyia fuliginosa*. **58** – *Berdeniella unispinosa*, *Clytocerus ocellaris*, *Pneumia plumicornis*, *Ulomyia fuliginosa*. **59** – *Berdeniella unispinosa*, *Szaboiella hibernica* [CR], *Ulomyia fuliginosa*. **60** – *Psychodocha gemina*, *Berdeniella kocii* sp. nov. [NS], *Pneumia trivialis*. **61** – *Pneumia pilularia*, *P. plumicornis*, *P. trivialis*, *Ulomyia fuliginosa*. **62** – *Philosepedon austriacum*, *P. humerale*, *Trichopsychoda hirtella*, *Logima albipennis*, *L. erminea*, *Psychodocha gemina*, *Tinearia alternata*, *Clytocerus ocellaris*, *Pneumia nubila*, *P. pilularia*, *P. trivialis*, *Tonnoiriella pulchra*, *Ulomyia fuliginosa*. **63** – *Logima erminea*, *Clytocerus ocellaris*, *Pericoma fallax*, *Pneumia nubila*, *P. pilularia*, *P. plumicornis*, *P. trivialis*, *Tonnoiriella sieberti* [EN], *Ulomyia fuliginosa*. **64** – *Sycorax tonnoiri* [CR], *Pneumia trivialis*, *Szaboiella hibernica* [CR], *Ulomyia fuliginosa*. **65** – *Berdeniella manicata*, *Ulomyia fuliginosa*. **66** – *Psychodocha gemina*. **67** – *Pneumia plumicornis*, *Ulomyia fuliginosa*. **68** – *Pneumia trivialis*. **69** – *Psychodocha cinerea*, *Tinearia alternata*. **70** – *Logima albipennis*, *Pneumia trivialis*, *Ulomyia fuliginosa*. **71** – *Chodopsycha lobata*, *Ulomyia vaseki* [EN]. **72** – *Parajungiella longicornis*, *Clytocerus ocellaris*, *Pneumia mutua*, *P. trivialis*, *Tonnoiriella pulchra*, *Ulomyia fuliginosa*. **73** – *Pneumia mutua*, *Saraiella rotunda* [CR]. **74** – *Pneumia plumicornis*. **75** – *Philosepedon hrudkai* [VU], *Psychoda phalaenoides*, *Clytocerus ocellaris*, *Pneumia pilularia*, *P. trivialis*. **76** – *Logima albipennis*, *L. zetterstedti*, *Psychoda phalaenoides*, *Berdeniella chvojikai* [VU], *B. desnensis* sp. nov. [NS], *Clytocerus ocellaris*, *Pneumia mutua*, *Ulomyia fuliginosa*. **77** – *Logima albipennis*, *L. satchelli*, *Berdeniella unispinosa*, *Pneumia mutua*, *Ulomyia fuliginosa*. **78** – *Berdeniella chvojikai* [VU], *Pneumia mutua*. **79** – *Threticus incurvus* [EN], *Logima albipennis*, *Psychodocha gemina*, *Berdeniella chvojikai* [VU], *B. desnensis* sp. nov. [NS], *B. longispinosa* [NS], *B. stavniensis*, *B. vimmeri*, *Clytocerus ocellaris*, *Pneumia mutua*, *P. trivialis*, *Saraiella rotunda* [CR], *Tonnoiriella pulchra*, *Ulomyia fuliginosa*. **80** – *Telmatoscopus carpathicus* [VU], *Psychoda phalaenoides*, *Psychodocha gemina*, *Clytocerus ocellaris*, *Pneumia mutua*, *Saraiella rotunda* [CR], *Ulomyia cognata*, *U. fuliginosa*. **81** – *Philosepedon balkanicum* [CR], *Threticus silvaticus* [VU], *Trichopsychoda hirtella*, *Chodopsycha lobata*, *Logima albipennis*, *L. satchelli*, *Psycha grisescens*, *Psychoda phalaenoides*, *Psychodocha cinerea*, *P. gemina*, *P. itoco* [NS], *Psychodula minuta*, *Psychomorpha trinodulosa*, *Ypsidocheta setigera*, *Berdeniella kocii* sp. nov. [NS], *B. unispinosa*, *Clytocerus ocellaris*, *Pneumia mutua*, *P. trivialis*, *Saraiella rotunda* [CR], *Szaboiella hibernica* [CR], *Ulomyia vaseki* [EN]. **82** – *Logima albipennis*, *Psychodocha gemina*, *Berdeniella matthesi*, *Saraiella parva* [CR], *S. rotunda* [CR]. **83** – *Logima zetterstedti*, *Pneumia mutua*, *P. trivialis*, *Tonnoiriella nigricauda* [CR], *Ulomyia fuliginosa*. **84** – *Sycorax silacea*, *S. tonnoiri* [CR], *Logima satchelli*, *L. zetterstedti*, *Pneumia mutua*, *Saraiella parva* [CR], *Szaboiella hibernica* [CR]. **85** – *Psychoda phalaenoides*, *Pneumia mutua*. **86** – *Berdeniella matthesi*, *Pneumia mutua*, *Ulomyia cognata*. **87** – *Pneumia mutua*, *P. stammeri* [EN], *Ulomyia fuliginosa*. **88** – *Berdeniella chvojikai* [VU], *B. stavniensis*, *Pneumia mutua*, *P. stammeri* [EN]. **89** – *Pneumia mutua*, *P. stammeri* [EN]. **90** – *Pneumia pilularia*, *P. plumicornis*, *Ulomyia fuliginosa*. **91** – *Saraiella rotunda* [CR]. **92** – *Psycha grisescens*. **93** – *Psycha grisescens*. **94** – *Ulomyia plumata* [CR]. **95** – *Pneumia mutua*, *Saraiella parva* [CR], *S. rotunda* [CR]. **96** – *Saraiella rotunda* [CR]. **97** – *Berdeniella stavniensis*, *Clytocerus ocellaris*, *Pneumia mutua*. **98** – *Psychodocha cinerea*, *P. gemina*, *Clytocerus ocellaris*, *Pneumia trivialis*, *Ulomyia cognata*. **99** – *Trichopsychoda hirtella*, *Chodopsycha lobata*, *Logima satchelli*, *L. zetterstedti*, *Pneumia trivialis*, *Ulomyia fuliginosa*, *U. plumata* [CR]. **100** – *Berdeniella kocii* sp. nov. [NS], *Clytocerus ocellaris*, *Pneumia trivialis*, *Saraiella rotunda* [CR], *Ulomyia cognata*. **101** – *Trichopsychoda hirtella*, *Berdeniella desnensis* sp. nov. [NS]. **102** – *Telmatoscopus gressicus*. **103** – *Logima satchelli*, *Psychoda phalaenoides*, *Pneumia mutua*, *Szaboiella hibernica* [CR], *Ulomyia fuliginosa*, *U. plumata* [CR]. **104** – *Threticus arvernicus* [VU], *T. lucifugus*, *T. silvaticus* [VU], *Trichopsychoda hirtella*, *Logima albipennis*, *Clytocerus ocellaris*, *Ulomyia cognata*, *U. fuliginosa*. **105** – *Psychodocha gemina*, *Saraiella rotunda* [CR]. **106** – *Peripsychoda auriculata*, *Logima satchelli*, *Clytocerus ocellaris*, *Pneumia trivialis*, *Ulomyia fuliginosa*. **107** – *Sycorax tonnoiri* [CR], *Peripsychoda auriculata*,

Chodopsycha lobata, *Logima albipennis*, *L. satchelli*, *L. zetterstedti*, *Psychodocha cinerea*, *P. gemina*, *Psychomorpha trinodulosa*, *Berdeniella kocii* sp. nov. [NS], *B. unispinosa*, *Clytocyclus ocellaris*, *Pneumia nubila*, *P. trivialis*, *Tonnoiriella pulchra*, *Ulomyia fuliginosa*. **108** – *Chodopsycha lobata*, *Berdeniella unispinosa*, *Pneumia mutua*, *Szaboiella hibernica* [CR], *Ulomyia fuliginosa*. **109** – *Trichopsychoda hirtella*, *Psychoda phalaenoides*, *Berdeniella unispinosa*, *Pneumia mutua*, *P. stammeri* [EN]. **110** – *Psychoda phalaenoides*, *Pneumia trivialis*, *Ulomyia fuliginosa*. **111** – *Trichopsychoda hirtella*, *Chodopsycha lobata*, *Psychoda phalaenoides*, *Berdeniella kocii* sp. nov. [NS], *B. unispinosa*, *Clytocyclus ocellaris*, *Pneumia crispus* [EN], *P. trivialis*, *Szaboiella hibernica* [CR], *Ulomyia fuliginosa*. **112** – *Berdeniella unispinosa*, *Clytocyclus ocellaris*, *Pneumia mutua*, *P. trivialis*, *Ulomyia fuliginosa*. **113** – *Sycorax tonnoiri* [CR], *Chodopsycha lobata*, *Psychoda phalaenoides*, *Psychodocha gemina*, *Berdeniella kocii* sp. nov. [NS], *Pneumia trivialis*, *Ulomyia fuliginosa*. **114** – *Philosepedon balkanicum* [CR], *Chodopsycha lobata*, *Logima albipennis*, *Berdeniella kocii* sp. nov. [NS], *B. unispinosa*, *Pericoma blandula*. **115** – *Philosepedon balkanicum* [CR], *Logima albipennis*, *Psychoda phalaenoides*, *Psychodocha gemina*, *Berdeniella unispinosa*, *Clytocyclus ocellaris*, *Pneumia trivialis*, *Szaboiella hibernica* [CR], *Ulomyia fuliginosa*. **116** – *Psychoda phalaenoides*, *P. uniformata*, *Berdeniella unispinosa*, *Pneumia trivialis*. **117** – *Logima satchelli*, *Psychoda phalaenoides*, *Psychodocha gemina*, *Berdeniella unispinosa*, *Clytocyclus ocellaris*, *Szaboiella hibernica* [CR], *Ulomyia fuliginosa*. **118** – *Logima albipennis*, *L. zetterstedti*, *Psychoda phalaenoides*, *Psychodocha gemina*, *Berdeniella unispinosa*, *Clytocyclus ocellaris*, *Pneumia trivialis*, *Ulomyia fuliginosa*. **119** – *Logima satchelli*, *Psyche grisescens*, *Psychoda phalaenoides*, *Pneumia trivialis*, *Ulomyia fuliginosa*. **120** – *Logima albipennis*, *Psychoda phalaenoides*, *Psychodocha gemina*, *Berdeniella kocii* sp. nov. [NS], *B. unispinosa*, *Pneumia trivialis*, *Ulomyia fuliginosa*. **121** – *Peripsychoda auriculata*, *Logima zetterstedti*, *Psychoda phalaenoides*, *Psychodula minuta*, *Clytocyclus ocellaris*, *C. rivosus* [CR], *Pneumia trivialis*, *Tonnoiriella pulchra*, *Ulomyia fuliginosa*. **122** – *Psychodocha gemina*, *Berdeniella kocii* sp. nov. [NS], *B. unispinosa*, *Pneumia trivialis*, *Ulomyia fuliginosa*. **123** – *Pneumia mutua*. **124** – *Ulomyia vaseki* [EN]. **125** – *Pneumia mutua*, *Saraiella rotunda* [CR]. **126** – *Pneumia mutua*, *Saraiella rotunda* [CR]. **127** – *Pneumia mutua*, *P. plumicornis*, *Saraiella rotunda* [CR]. **128** – *Psyche grisescens*, *Psychodocha gemina*, *Pneumia mutua*, *P. plumicornis*, *Saraiella rotunda* [CR]. **129** – *Pneumia mutua*. **130** – *Psychoda phalaenoides*, *Psychodocha gemina*, *Berdeniella unispinosa*, *Pneumia plumicornis*, *Ulomyia fuliginosa*. **131** – *Berdeniella chvojikai* [VU], *B. desnensis* sp. nov. [NS], *B. longispinosa* [NS], *Saraiella rotunda* [CR]. **132** – *Pneumia mutua*, *Saraiella rotunda* [CR]. **133** – *Logima satchelli*, *Pneumia mutua*, *Saraiella rotunda* [CR]. **134** – *Pneumia mutua*, *Saraiella parva* [CR]. **135** – *Logima albipennis*, *L. satchelli*, *Psyche grisescens*, *Saraiella parva* [CR]. **136** – *Psyche grisescens*, *Berdeniella matthesi*, *Saraiella rotunda* [CR]. **137** – *Saraiella rotunda* [CR]. **138** – *Pneumia mutua*, *Saraiella parva* [CR], *S. rotunda* [CR]. **139** – *Pneumia mutua*, *Saraiella rotunda* [CR]. **140** – *Berdeniella matthesi*, *Pneumia mutua*, *Saraiella rotunda* [CR]. **141** – *Saraiella rotunda* [CR]. **142** – *Logima zetterstedti*, *Psychoda phalaenoides*, *Berdeniella matthesi*, *Pneumia mutua*, *Saraiella parva* [CR], *S. rotunda* [CR]. **143** – *Psyche grisescens*, *Berdeniella matthesi*, *B. vimmeri*, *Pneumia mutua*, *Saraiella rotunda* [CR]. **144** – *Saraiella parva* [CR], *S. rotunda* [CR], *Ulomyia cognata*. **145** – *Saraiella rotunda* [CR]. **146** – *Pneumia mutua*. **147** – *Berdeniella unispinosa*, *Szaboiella hibernica* [CR], *Ulomyia vaseki* [EN]. **148** – *Berdeniella unispinosa*, *Pneumia trivialis*, *Szaboiella hibernica* [CR], *Ulomyia vaseki* [EN]. **149** – *Psychoda phalaenoides*, *Berdeniella matthesi*, *Clytocyclus dalii*, *C. ocellaris*, *Pneumia trivialis*. **150** – *Berdeniella kocii* sp. nov. [NS], *Pneumia mutua*, *Szaboiella hibernica* [CR], *Ulomyia fuliginosa*, *U. vaseki* [EN]. **151** – *Chodopsycha lobata*, *Pneumia trivialis*. **152** – *Copropsychoda brevicornis*, *Logima satchelli*, *Psychoda phalaenoides*, *Psychodocha gemina*, *Berdeniella unispinosa*, *Clytocyclus ocellaris*, *Pneumia pilularia*, *P. plumicornis*, *Ulomyia fuliginosa*. **153** – *Berdeniella unispinosa*, *Pneumia mutua*, *Ulomyia fuliginosa*. **154** – *Sycorax tonnoiri* [CR], *Threticus lucifugus*. **155** – *Pneumia plumicornis*, *Ulomyia fuliginosa*. **156** – *Berdeniella unispinosa*, *Pneumia mutua*. **157** – *Psychodocha gemina*, *Pneumia trivialis*, *Ulomyia fuliginosa*. **158** – *Chodopsycha lobata*. **159** – *Threticus lucifugus*, *T. silvaticus* [VU]. **160** – *Paramormia polyaschoidea*, *Logima albipennis*, *L. satchelli*, *Psychoda phalaenoides*, *Psychomorpha trinodulosa*, *Berdeniella chvojikai* [VU], *B. desnensis* sp. nov. [NS]. **161** – *Parajungiella longicornis*, *Logima satchelli*, *L. zetterstedti*, *Psychoda phalaenoides*, *Psychodocha gemina*, *Berdeniella chvojikai* [VU], *B. desnensis* sp. nov. [NS], *B. manicata*, *B. pyrenaica* [NS], *Clytocyclus ocellaris*, *Parabazarella subneglecta*, *Pericoma fallax*, *Pneumia mutua*, *P. trivialis*. **162** – *Parajungiella ellisi* [CR], *P. longicornis*, *Psychoda phalaenoides*, *Berdeniella unispinosa*, *Pneumia mutua*, *P. trivialis*, *Ulomyia fuliginosa*. **163** – *Psychoda phalaenoides*, *Pericoma fallax*. **164** – *Pneumia mutua*.

165 – *Threticus lucifugus*, *Logima satchelli*, *L. zetterstedti*, *Psychoda phalaenoides*, *Berdeniella stavniensis*, *Pneumia mutua*, *P. trivialis*, *Ulomyia fuliginosa*, *U. plumata* [CR]. 166 – *Parajungiella longicornis*, *Threticus incurvus* [EN], *Pneumia mutua*, *Szaboiella hibernica* [CR], *Ulomyia fuliginosa*. 167 – *Pneumia mutua*, *Ulomyia fuliginosa*. 168 – *Pneumia plumicornis*. 169 – *Pneumia plumicornis*. 170 – *Logima satchelli*. 171 – *Trichopsychoda hirtella*, *Psychomora trinodulosa*, *Ulomyia fuliginosa*. 172 – *Chodopsycha lobata*, *Psychoda phalaenoides*, *Psychodocha gemina*, *Ulomyia fuliginosa*. 173 – *Peripsychoda auriculata*, *Philosepedon austriacum*, *P. humerale*, *Logima satchelli*, *Psychoda phalaenoides*, *Psychodocha cinerea*, *Clytocerus ocellaris*, *Pneumia trivialis*, *Ulomyia fuliginosa*. 174 – *Clytocerus ocellaris*, *Pneumia trivialis*, *Ulomyia fuliginosa*. 175 – *Logima satchelli*, *Berdeniella unispinosa*. 176 – *Philosepedon austriacum*, *Logima satchelli*, *Psychoda phalaenoides*, *Berdeniella matthesi*, *Clytocerus dalii*, *Pneumia mutua*, *Ulomyia fuliginosa*, *U. vaseki* [EN]. 177 – *Logima zetterstedti*, *Berdeniella unispinosa*, *Ulomyia vaseki* [EN]. 178 – *Paramormia polyascoidea*, *Psychoda phalaenoides*, *Tonnoiriella pulchra*. 179 – *Parabazarella subneglecta*, *Pericoma fallax*, *Pneumia trivialis*. 180 – *Peripsychoda auriculata*, *Psychoda phalaenoides*, *Pneumia trivialis*, *Ulomyia fuliginosa*. 181 – *Peripsychoda auriculata*, *Clytocerus ocellaris*, *Pneumia trivialis*, *Ulomyia fuliginosa*. 182 – *Psychodocha gemina*, *Clytocerus ocellaris*, *Pneumia nubila*, *P. trivialis*, *Ulomyia fuliginosa*. 183 – *Pneumia trivialis*, *Ulomyia fuliginosa*. 184 – *Peripsychoda auriculata*, *Clytocerus ocellaris*, *Pneumia trivialis*, *Tonnoiriella nigricauda* [CR], *Ulomyia fuliginosa*. 185 – *Clytocerus ocellaris*, *Pericoma blandula*, *P. fallax*. 186 – *Logima satchelli*, *Pericoma fallax*. 187 – *Chodopsycha lobata*, *Copropsychoda brevicornis*, *Logima satchelli*, *Psychoda phalaenoides*, *Psychomora trinodulosa*, *Pneumia trivialis*, *Ulomyia annulata*. 188 – *Peripsychoda auriculata*, *Logima albipennis*, *L. satchelli*, *Psychoda phalaenoides*, *Berdeniella unispinosa*, *Pneumia trivialis*, *Ulomyia fuliginosa*. 189 – *Psychoda phalaenoides*, *Clytocerus ocellaris*, *Pneumia trivialis*, *Ulomyia fuliginosa*. 190 – *Logima albipennis*, *Berdeniella kocii* sp. nov. [NS], *B. unispinosa*, *Pneumia trivialis*, *Ulomyia cognata*, *U. fuliginosa*. 191 – *Clytocerus ocellaris*. 192 – *Clytocerus ocellaris*, *Pneumia trivialis*, *Ulomyia fuliginosa*. 193 – *Psychodocha gemina*, *Clytocerus ocellaris*, *Pneumia trivialis*, *Ulomyia fuliginosa*. 194 – *Pericoma pseudoexquisita*. 195 – *Clytocerus ocellaris*, *Pneumia trivialis*. 196 – *P. trivialis*. 197 – *Philosepedon balkanicum* [CR], *Chodopsycha lobata*, *Logima satchelli*, *Psychoda phalaenoides*, *Berdeniella unispinosa*, *Szaboiella hibernica* [CR], *Ulomyia fuliginosa*, *U. plumata* [CR]. 198 – *Chodopsycha lobata*, *Logima albipennis*, *L. satchelli*, *Psychoda phalaenoides*, *Berdeniella unispinosa*, *Pneumia mutua*, *Szaboiella hibernica* [CR], *Ulomyia plumata* [CR]. 199 – *Panimerus notabilis*, *Paramormia polyascoidea*, *Clytocerus ocellaris*, *Pneumia nubila*, *P. trivialis*. 200 – *Pneumia trivialis*. 201 – *Psychodocha gemina*, *Berdeniella manicata*, *B. vimmeri*, *Clytocerus ocellaris*, *Parabazarella subneglecta*, *Pericoma fallax*, *Pneumia nubila*. 202 – *Chodopsycha lobata*, *Logima albipennis*, *L. erminea*, *Psychoda phalaenoides*, *Psychomora trinodulosa*, *Clytocerus ocellaris*, *Ulomyia cognata*, *U. fuliginosa*. 203 – *Philosepedon austriacum*, *P. humerale*, *Logima albipennis*, *L. satchelli*, *Clytocerus ocellaris*. 204 – *Peripsychoda auriculata*, *Pneumia trivialis*, *Ulomyia fuliginosa*. 205 – *Threticus lucifugus*, *Clytocerus ocellaris*, *Pneumia trivialis*, *Ulomyia fuliginosa*. 206 – *Szaboiella hibernica* [CR]. 207 – *Logima albipennis*, *L. satchelli*, *Psychoda phalaenoides*, *Psychodocha gemina*, *Psychomora trinodulosa*, *Berdeniella manicata*, *Pericoma fallax*. 208 – *Psychoda phalaenoides*, *Berdeniella unispinosa*, *Pericoma blandula*, *P. fallax*, *Pneumia trivialis*. 209 – *Panimerus notabilis*, *Berdeniella manicata*, *Pericoma blandula*, *P. fallax*, *Pneumia nubila*, *P. trivialis*. 210 – *Pneumia mutua*, *Saraiella rotunda* [CR]. 211 – *Psychoda phalaenoides*, *Berdeniella unispinosa*, *Clytocerus ocellaris*, *Pericoma blandula*, *Pneumia trivialis*, *Ulomyia fuliginosa*. 212 – *Peripsychoda auriculata*, *Tinearia lativentris*, *Clytocerus ocellaris*, *Pericoma fallax*, *Pneumia nubila*, *P. trivialis*, *Ulomyia fuliginosa*. 213 – *Tinearia lativentris*, *Clytocerus ocellaris*, *Pneumia nubila*, *P. trivialis*, *Ulomyia fuliginosa*. 214 – *Atrichobrunettia graeca* [VU], *Clytocerus ocellaris*, *Ulomyia fuliginosa*. 215 – *Pneumia nubila*, *P. trivialis*. 216 – *Telmatoscopus carthusianus*, *Philosepedon humerale*, *Chodopsycha lobata*, *Logima satchelli*, *L. zetterstedti*, *Psychoda phalaenoides*, *Psychodocha gemina*, *Ulomyia fuliginosa*. 217 – *Pneumia mutua*, *Ulomyia fuliginosa*. 218 – *Logima satchelli*, *L. zetterstedti*, *Pneumia mutua*, *Saraiella rotunda* [CR]. 219 – *Panimerus denticulatus*, *Peripsychoda auriculata*, *Clytocerus ocellaris*, *Pneumia nubila*, *P. trivialis*, *Ulomyia fuliginosa*. 220 – *Parajungiella longicornis*, *Peripsychoda auriculata*, *Clytocerus ocellaris*, *Pneumia trivialis*, *Ulomyia fuliginosa*. 221 – *Logima satchelli*, *Psychoda phalaenoides*. 222 – *Chodopsycha lobata*, *Berdeniella unispinosa*, *Pneumia mutua*, *Szaboiella hibernica* [CR], *Ulomyia fuliginosa*. 223 – *Chodopsycha lobata*, *Psychoda grisescens*. 224 – *Logima satchelli*, *Psychoda phalaenoides*, *P. uniformata*. 225 – *Ulomyia fuliginosa*. 226 – *Promormia eatoni* [EN], *Peripsychoda auriculata*, *Logima albipennis*, *L. satchelli*, *L. zetterstedti*, *Psychodocha gemina*, *Pericoma fallax*, *Pneumia nubila*, *P. trivialis*, *Ulomyia fuliginosa*.

Discussion

Altogether 78 species of moth flies have been found in the Jeseníky PLA and adjacent areas (north-western Moravia and Silesia). This represents more than half (52.7 %) the number of psychodid species occurring in the Czech Republic (JEŽEK in prep.).

The moth flies of this territory represent montane taxa as well as sub-Mediterranean and Transcaucasian elements, being mostly a combination of European, European-West Siberian, Eurasian, Palearctic, Holarctic and cosmopolitan species. Most of them are generally European in distribution (53 spp., 68 %), of which some are so far known only from Central Europe (7 spp., 9 %). They are followed by seven European-West Siberian species (9 %), six Holarctic species (7.7 %), five Palearctic species (6.4 %), four cosmopolitan species (5.1 %), two sub-Mediterranean species (2.6 %) and one Eurasian species (1.3 %). The distribution of 13 European, European-West Siberian and sub-Mediterranean species reaches also North Africa, Transcaucasia, Tajikistan, Syria or Iran. Apart from the two species new to science, *Berdeniella kocii* sp. nov. and *B. desnensis* sp. nov., two more species recorded in this paper are new to the Czech Republic: *Berdeniella longispinosa* and *B. pyrenaica*.

Nine species found in the studied area were included in the Red list (JEŽEK 2005) as critically endangered (*Sycorax tonnoiri*, *Parajungiella ellisi*, *Philosepedon balkanicum*, *Clytocerus rivosus*, *Saraiella parva*, *S. rotunda*, *Szaboiella hibernica*, *Tonnoiriella nigricauda* and *Ulomyia plumata*), seven as endangered (*Promormia eatoni*, *Telmatoscopus labeculosus*, *Threticus incurvus*, *Pneumia crispi*, *P. stammeri*, *Tonnoiriella sieberti* and *Ulomyia vaseki*), and six as vulnerable (*Atrichobrunettia graeca*, *Telmatoscopus carpathicus*, *Philosepedon hrudkai*, *Threticus arvernensis*, *T. silvaticus* and *Berdeniella chvojikai*). The conservation status could not be estimated for the following six species: *Yomormia furva*, *Psychodocha itoco*, *Berdeniella desnensis* sp. nov., *B. kocii* sp. nov., *B. longispinosa* and *B. pyrenaica*.

Ulomyia fuliginosa was the most frequently collected species in the study area (108 localities), followed by *Pneumia trivialis* with 90 localities. On the other hand, 21 species were collected at a single locality. The highest number of psychodid species was found in the Velká kotlina basin [81, 82] with 24 species, followed by Lipová Lázně [107] with 16 species, Domašovský kopec hill [9] with 15 species, and four localities with 14 species: a forest brook between Branná and Ostružná [16], Kronfelzov [25], Filipovické louky meadows [45], and the Moravice river in Karlov pod Pradědem [79]. A single psychodid species was collected at 35 localities. Some of the collected species are known from a very limited area (one or a few countries) and are generally very rare: *Yomormia furva*, *Telmatoscopus carpathicus*, *Philosepedon hrudkai*, *Threticus arvernensis*, *T. silvaticus*, *Psychodocha itoco*, *Berdeniella chvojikai*, *B. desnensis* sp. nov., *B. kocii* sp. nov., and *B. vimmeri*. Of these, *Telmatoscopus carpathicus*, *Threticus arvernensis*, *Berdeniella desnensis* sp. nov. and *B. kocii* sp. nov. (as well as *B. pyrenaica*) have not been found elsewhere in the Czech Republic.

The following species (mostly with aquatic larvae) are probably characteristic for montane biotopes: *Telmatoscopus carpathicus*, *Saraiella parva*, *S. rotunda*, *Szaboiella hibernica*, *Pneumia plumicornis*, *Ulomyia plumata*, and *U. vaseki*. The last species reaches its northern limit in the Hercynicum and passes through the Carpathians to the Alps. One hundred localities (44.2 %) are important from the view of nature protection. The most valuable localities

are Karlov pod Pradědem – Moravice river [79] and the Velká kotlina basin [81] which harbour species from all four conservation categories (CR, EN, VU and NS). Critically endangered species occur at 66 localities, of which nine have two critically endangered species [64, 82, 95, 103, 115, 138, 142, 144 and 198] and three have three critically endangered species [81, 84 and 197]. One endangered species was found at further 24 localities.

Acknowledgements

First and foremost I would like to thank Karel Kočí, Jan Halfar and other staff of the management of the Jeseníky Protected Landscape Area (Jeseník – Bukovice, Czech Republic) for their encouragement of my research in the Jeseníky PLA and its surroundings. Photographs were kindly provided from the photo archive of the same institution (managed by Michal Ulrych). I am especially obliged to Freddy Bravo (University of Feira de Santana, Brazil), Jaroslav Starý (Palacký University, Olomouc, Czech Republic) and Petr Kment (National Museum, Praha, Czech Republic) for their constructive comments on the manuscript. This study was supported by the Ministry of Culture of the Czech Republic (grant MK00002327201).

References

- DUCKHOUSE D. A. 1990: The Australasian genera of Pericomoid Psychodidae (Diptera) and the status of related Enderlein genera in the Neotropics. *Invertebrate Taxonomy* **3**: 721-746.
- JEŽEK J. 1985: Contribution to the knowledge of a new subtribe Trichopsychodina (Diptera, Psychodidae) from Czechoslovakia. *Acta Musei Nationalis Pragae* **40B** (1984): 65-92.
- JEŽEK J. 1990a: Contribution to the taxonomy of some genera of Paramormiine moth flies (Diptera, Psychodidae) with description of a new genus Karakovounimerus. *Acta Entomologica Musei Nationalis Pragae* **43**: 129-157.
- JEŽEK J. 1990b: Redescriptions of nine common Palaearctic and Holarctic species of Psychodini End. (Diptera: Psychodidae). *Acta Entomologica Musei Nationalis Pragae* **43**: 33-83.
- JEŽEK J. 1996: New faunistic records of moth flies (Diptera, Psychodidae) from the Czech Republic. *Časopis Národního Muzea, Řada Přírodovědná* **165**: 113-120.
- JEŽEK J. 1999: Rare and new Palaearctic Tonnoiriella – species (Diptera, Psychodidae). *Časopis Národního Muzea, Řada Přírodovědná* **168**: 7-18.
- JEŽEK J. 2002: The first account of Slovenian moth flies (Psychodidae, Diptera). *Časopis Národního Muzea, Řada Přírodovědná* **171**: 89-116.
- JEŽEK J. 2003: New faunistic data and check list of non Phlebotomine moth flies (Diptera, Psychodidae) from the Czech and Slovak Republics. *Časopis Národního Muzea, Řada Přírodovědná*, **172**: 121-132.
- JEŽEK J. 2004a: New faunistic data of non-phlebotomine moth flies (Diptera, Psychodidae) from the Palaearctic region. *Dipterologica Bohemoslovaca*, Vol. 11. *Folia Facultatis Scientiarum Naturalium Universitatis Masarykianae Brunensis, Biologia* **109**: 141-151.
- JEŽEK J. 2004b: New and interesting moth flies (Diptera, Psychodidae) from protected and underestimated natural areas of the Czech Republic. *Časopis Národního Muzea, Řada Přírodovědná* **173**: 113-128.
- JEŽEK J. 2005: Psychodidae. Pp. 259-261. In FARKAČ J., KRÁL D. & ŠKORPÍK M. (eds.): *Červený seznam ohrožených druhů České republiky. Bezobratlí. (Red List of Threatened Species in the Czech Republic, Invertebrates)*. Agentura ochrany přírody a krajiny ČR, Praha, 760 pp.
- JEŽEK J. 2006: Faunistic records. Psychodidae. In KINKOROVÁ J. (ed.): *Dipterologica Bohemoslovaca*, Vol. 13. *Acta Universitatis Carolinae Biologica* **50**: in press.
- JEŽEK J. in prep.: Psychodidae. In JEDLIČKA L. (ed.): Electronic version of check list of Diptera of the Czech and Slovak Republics. Bratislava (in preparation).

- JEŽEK J. & YAĞCI Ş. 2005: Common non-biting moth flies (Insecta, Diptera, Psychodidae) new to the fauna of Turkey. *Acta Parasitologica Turcica* **29**: 188-192.
- PRUNER L. & MÍKA P. 1996: Seznam obcí a jejich částí v České republice s čísly mapových polí pro síťové mapování fauny. (List of settlements in the Czech Republic with associated map field codes for faunistic grid mapping system). *Klapalekiana* **32(Suppl.)**: 1-175 (in Czech, English summary).
- VAILLANT F. 1976: 9d. Psychodidae – Psychodinae. In LINDNER E. (ed.): *Die Fliegen der palaearktischen Region* (Stuttgart) **313**: 183-206.
- WAGNER R. 1990: Family Psychodidae. Pp. 11-65. In SOÓS A. (ed.): *Catalogue of Palaearctic Diptera, Vol. 2, Psychodidae – Chironomidae*. Akadémiai Kiadó, Budapest, 499 pp.
- ZELENÝ J., 1972: Entwurf einer Gliederung der Tschechoslowakei für Zwecke der faunistischen Forschung. *Zprávy Československé Společnosti Entomologické při ČSAV* (Praha) **8**: 3-16 (in Czech, Germ. summary).