

## New species of the genus *Sparedrus* (Coleoptera: Oedemeridae) from Bulgaria

Vladimír ŠVIHLA

Department of Entomology, National Museum, Kunratice 1, CZ-148 00 Praha 4, Czech Republic;  
e-mail: vladimir\_svihla@nm.cz

**Abstract.** A new species of the family Oedemeridae, *Sparedrus bulgaricus* sp. nov., is described and illustrated from northeastern Bulgaria.

**Key words.** Taxonomy, Coleoptera, Oedemeridae, new species, Palaearctic region, Bulgaria

### Introduction

Since the World War II, only six species of the family Oedemeridae were described from the European territory. However, four of them were not truly discovered as they were mixed with other species. The only two 'complete' discoveries were *Sparedrus lencinae* Vázquez, 1988, from Spain and *Stenostoma cossyrense* Bologna, 1995, from the Pantelleria Island. In the present paper I describe another new species of the genus *Sparedrus* Megerle in Dejean, 1821, which has most probably not been collected earlier as well.

The discovery of a new species of *Sparedrus* in Bulgaria is perhaps not too surprising as the species of this genus are nocturnal and appear to have limited distribution areas, probably of a relict nature. Only one of the three known European species, *S. testaceus* (Andersch, 1797), is more widely distributed and more numerous in the collections. It occurs in Balkan Peninsula and reaches northeastern Italy, Austria and southern parts of the Czech Republic and Slovakia in the north. *Sparedrus orsinii* Costa, 1852, is endemic to the Apennines, reaching southern Sicily, and *S. lencinae* is restricted to a small area in southeastern Spain (VÁZQUEZ 2002).

### Material and methods

Shades of colours used in the description follow PACLT (1958) and the names of integument structures follow HARRIS (1979). They were observed under a 90x magnification. Locality labels of the type specimens are cited verbatim with standardized dates. Separate labels are divided in the text by a double slash (/).

## Taxonomy

### *Sparedrus bulgaricus* sp. nov.

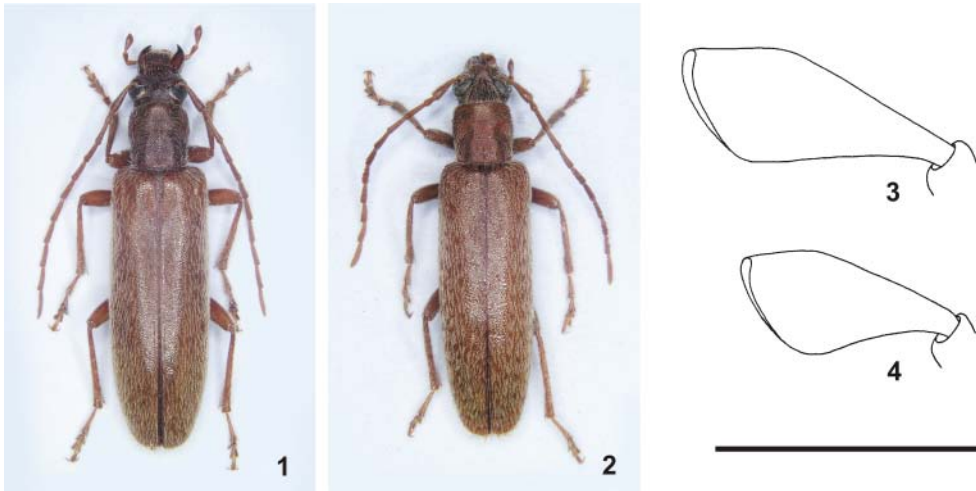
(Figs. 1, 3)

**Type locality.** Northeastern Bulgaria, Zlatni Pyasatsi, ca 10 km NE of Varna.

**Type material.** HOLOTYPE: ♀, 'Bulharsko [= NE Bulgaria], Zlaté Písky [= Zlatni Pyasatsi], Jan Víša lgt. [handwritten] // 17.v.1971 [on the reverse of the label, handwritten]'. Paratype: ♀, 'Bulgaria [= NE Bulgaria], Albena (z pavučiny na dubu) [= collected in cobweb on oak], 20.vi.1999, leg. Luboš John'. Both the holotype and the paratype are deposited in the National Museum, Praha.

**Description.** Coloration. Body entirely terra-cotta, tips of mandibles sepia (Fig. 1).

Female. Eyes large, slightly protruding, head across eyes very slightly narrower than pronotum, frons between eyes ca twice as wide as length of antennomere 2, head behind eyes moderately and arcuately narrowing posteriorly. Antennae reaching about two thirds of elytral length, antennomere 3 ca twice as long as antennomere 2, antennomeres 3-5 elongate triangular, 6-11 elongate triangular with slightly arcuate inner margin. Last palpomere of maxillary palpus as in Fig. 3. Surface of head semilustrous to mat, sparsely punctate on frons, densely punctate on vertex, covered by sparse, long, recumbent, pale lemon yellow pubescence. Pronotum ca as long as wide, slightly cordiform, its anterior margin widely rounded, anterior corners rounded, lateral margins sinuate, moderately narrowing posteriorly, posterior corners slightly projecting, acutely rounded, posterior margin nearly straight. Surface of pronotum mat, densely punctate, punctures confluent in ca posterior two thirds of pronotum, cov-



Figs. 1-4. 1-2 – habitus of female. 1 – *Sparedrus bulgaricus* sp. nov.; 2 – *S. orsinii* Costa, 1852. 3-4 – last palpomere of female maxillary palpus. 3 – *S. bulgaricus* sp. nov.; 4 – *S. orsinii*. Scale bar = 0.5 mm.

ered by sparse, long, recumbent, pale lemon yellow pubescence. Elytra parallel-sided, moderately narrowing posteriorly from about two thirds of their length, apex of each elytron nearly rectangular, slightly rounded. Elytral striae absent. Surface of elytra semilustrous, more sparsely and more finely punctate than that of pronotum, covered by similar pubescence.

Male unknown.

Length: 12.9 mm (holotype), 14.6 mm (paratype).

**Differential diagnosis.** *Sparedrus bulgaricus* sp. nov. is very similar both in its coloration and the body form to *S. orsinii*, from which it differs by the absence of small glabrous areas on the elytra (Figs. 1-2, best visible in the apical third of elytra) and in the longer last palpomere of the female maxillary palpus (Figs. 3-4). In the identification key by VÁZQUEZ (2002) it also keys to *S. orsinii*.

**Etymology.** Patronymic, named according to the country of its origin.

**Distribution.** Northeastern Bulgaria.

### Acknowledgements

It is my pleasant duty to thank to Luboš John (Praha) and Jan Víša (Slaný), who kindly gave me the specimens. I am also obliged to Martin Fikáček and Jan Macek (both National Museum, Praha) who helped me make photos and order the illustrations, and to Petr Kment (National Museum, Praha), Zbyněk Kejval (Domažlice) and Xavier Vázquez (Barcelona) for their comments on the manuscript. This study was partly supported by the Ministry of Culture of the Czech Republic (grant no. MK 00002327201).

### References

- HARRIS R. A. 1979: The glossary of surface sculpturing. *Occasional Papers in Entomology* (Sacramento) **28**: 1-31.  
PACLT J. 1958: *Farbenbestimmung in der Biologie*. VEB Gustav Fischer Verlag, Jena, 76 pp. + 5 pls.  
VÁZQUEZ X. A. 2002: *European Fauna of Oedemeridae*. Argania Editio, Barcelona, 178 pp.

